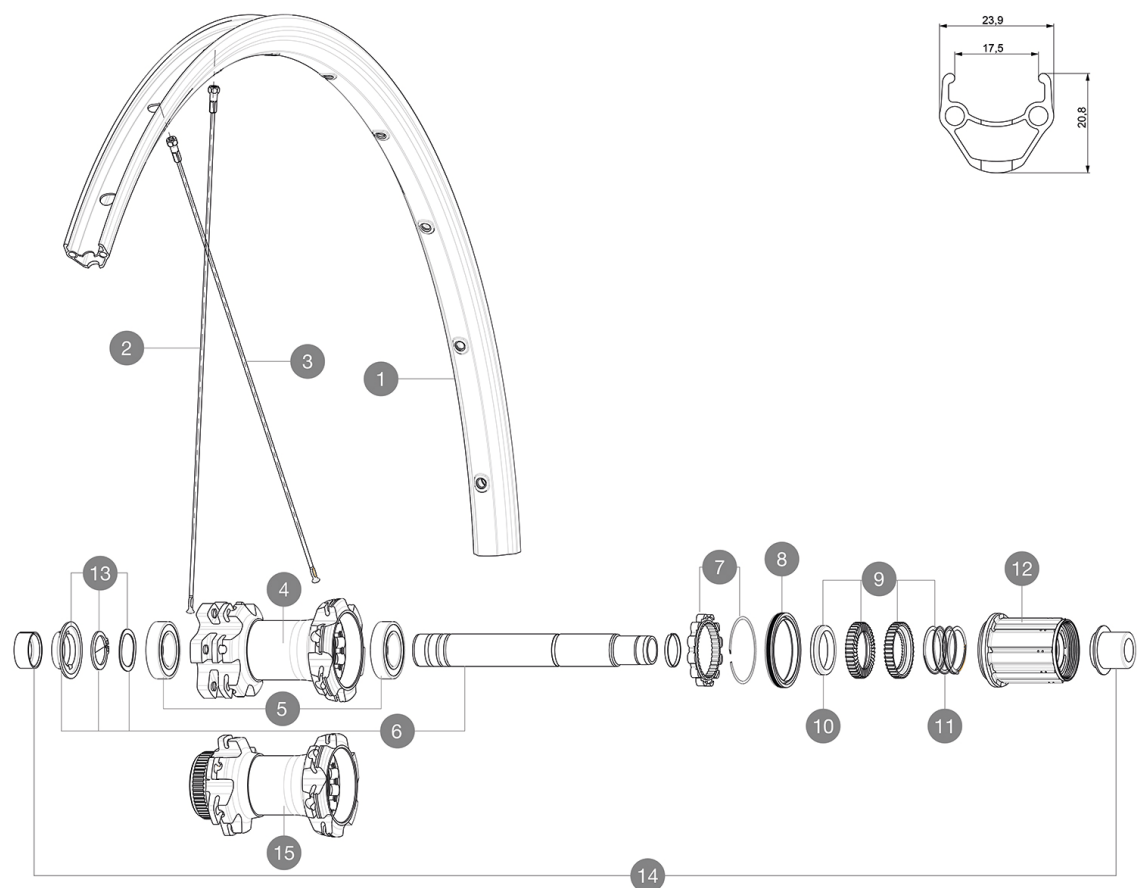


MAVIC Aksium Disc TA

ASTM A242 + A242 2 : A242 + A242 15 A242 A242
 A242
 A242 A242 A242 120 A242
 A242 A242 A242 A242 A242 A242 25 A242 32 mm
 A242 A242 A242 A242 23mm 8.7 bars - 125 psi, 25mm 7.7 bars - 110 psi

参照ホイール

R18911	Aks18D6BRr12x142SV	R18921	Aks18DCLRr12x142SV
--------	--------------------	--------	--------------------



RIMS



&NBSP;:

1	V2290815	KIT FRONT/REAR RIM AKSIUM ONE DISC
---	----------	------------------------------------

SPOKES

2	V2277201	KIT 12 FRONT 9/12mm AKSIUM DISC ALLROAD 700 ROUND SPOKE
3	V2279201	KIT 12 DS AKSIUM DISC 12mm RND SPK 292mm

HUB SHELLS

5	M40076	HUB BEARINGS 17x30x7 6903 x 2
6	V2252901	KIT ID360 CENTER LOCK 135/142mm AXLE WITH CIRCLIP
6	V2253001	KIT ID360 6 BOLTS 135/142mm AXLE WITH CIRCLIP
7	V2252701	KIT ID360 INSERT SHAPED EAR LOBE > 2017
8	V2251601	ID360 SEAL + GREASE
9	V2251701	ID360 2 RATCHETS + SPRING + GREASE
10	V2500501	Kit 3 ID360 pad for noise reduction
11	V2251801	KIT 3 ID360 ROAD SPRINGS
12	V4000101	HG11 STEEL ROAD FREE HUB BODY ID360 - while stock last
12	V3430101	HG11 Freewheel Body ID360
13	V2560501	KIT ADJUST. SYSTEM QRM AUTO ID360 for 17x28x7 bearing

ADAPTERS

14	V2510701	ID360 EVO REAR AXLE ADAPTERS 12x142mm DCL & D6T
	V2510901	ID360 EVO REAR AXLE ADAPTERS 12x135mm DCL & D6T
	V2510801	ID360 EVO REAR AXLE ADAPTERS 9x135mm DCL & D6T



Aksium Disc TA

付属品

BR101 (M40350 M40351 M40352 MTB)	

COMPATIBILITY

Rear axle: 12mm thru axle, convertible to Quick Release with optional adaptaters	

Specifications

リム

- S6000 21 mm
- : 6.5 mm
- H2
- 17 mm
- ETRTO : 622x17C

スポーク

- 24
- ABS
- 2A

ホイールハブ

- QRM Auto
- 360

VERSIONS

- 6A
- RA

ホイールの重み

990