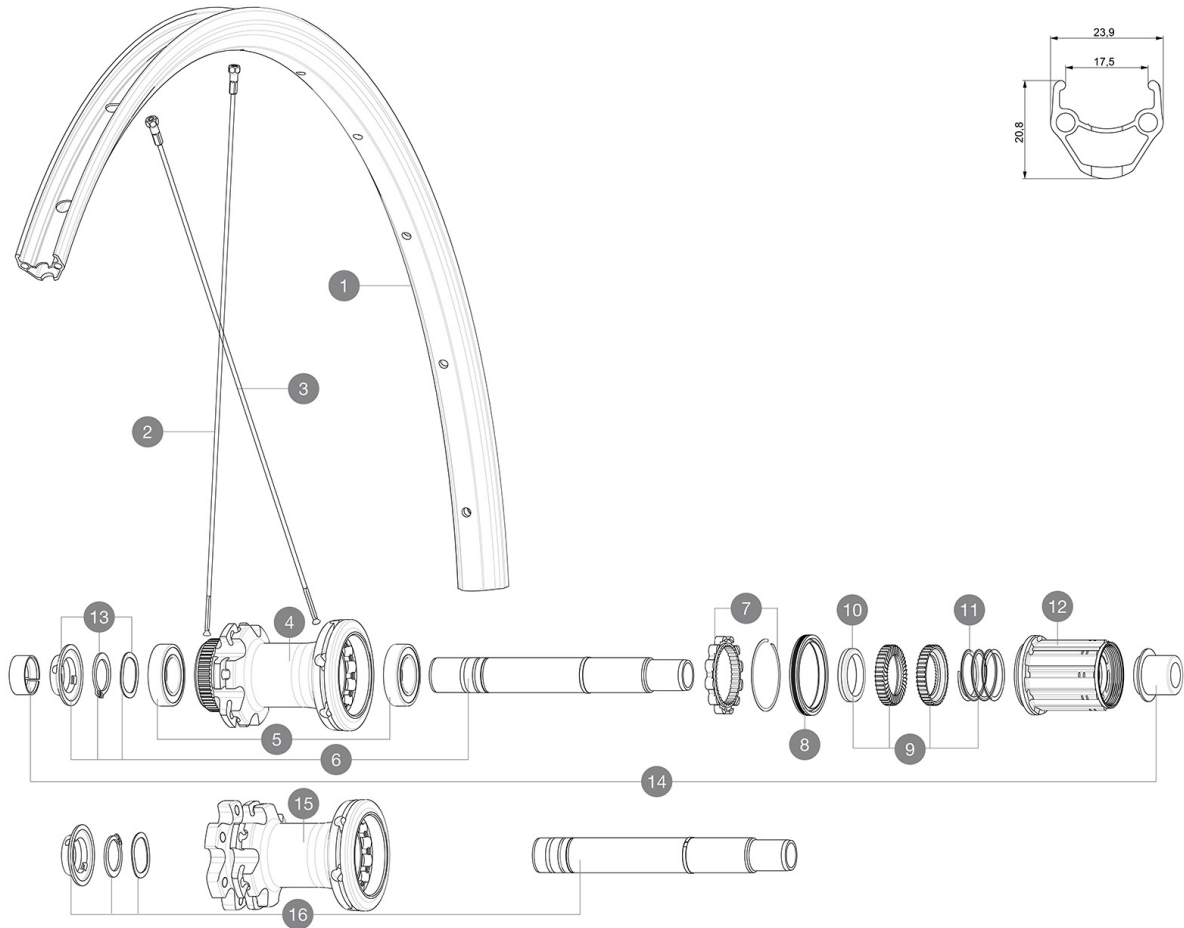


参照ホイール

R23151	AKSIUM INT 700 12X142 M11	R23171	AKSIUM CL 700 12x142 M11
--------	---------------------------	--------	--------------------------

23mm -
 8Bar/115PSI
 ASTM A521 2 : 15
 120
 25 32mm
 2
 Maximum tyre pressure: 7.5bar/108PSI with a 23mm tyre - 4.6bar/67PSI with a 52mm tyre
 23mm 8.7 bars - 125 psi, 25mm 7.7 bars - 110 psi
 5Bar/72PSI



SPOKES

2	V3661601	KIT 12 FRT/NDIS AKSIUM Disc 19 ROUND SPOKE 297mm + nipples
2	V2383001	KIT 12 FT/NDIS CROSSRIDE FTSX 29" SPK 297mm
3	V3661701	KIT 12 DS AKSIUM Disc 19/ ALLROAD UST Disc ROUND SPOKE 297mm
3	V2279201	KIT 12 DS AKSIUM DISC 12mm RND SPK 292mm

ADAPTERS

14	V2510701	ID360 EVO REAR AXLE ADAPTERS 12x142mm DCL & D6T
	V2510901	ID360 EVO REAR AXLE ADAPTERS 12x135mm DCL & D6T
	V2510801	ID360 EVO REAR AXLE ADAPTERS 9x135mm DCL & D6T

HUB SHELLS

5	M40076	HUB BEARINGS 17x30x7 6903 x 2
6	V2252901	KIT ID360 CENTER LOCK 135/142mm AXLE WITH CIRCLIP
7	V2252701	KIT ID360 INSERT SHAPED EAR LOBE > 2017
8	V2251601	ID360 SEAL + GREASE
9	V2251701	ID360 2 RATCHETS + SPRING + GREASE
10	V2500501	Kit 3 ID360 pad for noise reduction
11	V2251801	KIT 3 ID360 ROAD SPRINGS
12	V4000101	HG11 STEEL ROAD FREE HUB BODY ID360 - while stock last
12	V3430101	HG11 Freewheel Body ID360
13	V2373001	KIT ADJUST. SYSTEM QRM AUTO ID360 for 17x30x7 bearing
16	V2253001	KIT ID360 6 BOLTS 135/142mm AXLE WITH CIRCLIP

