

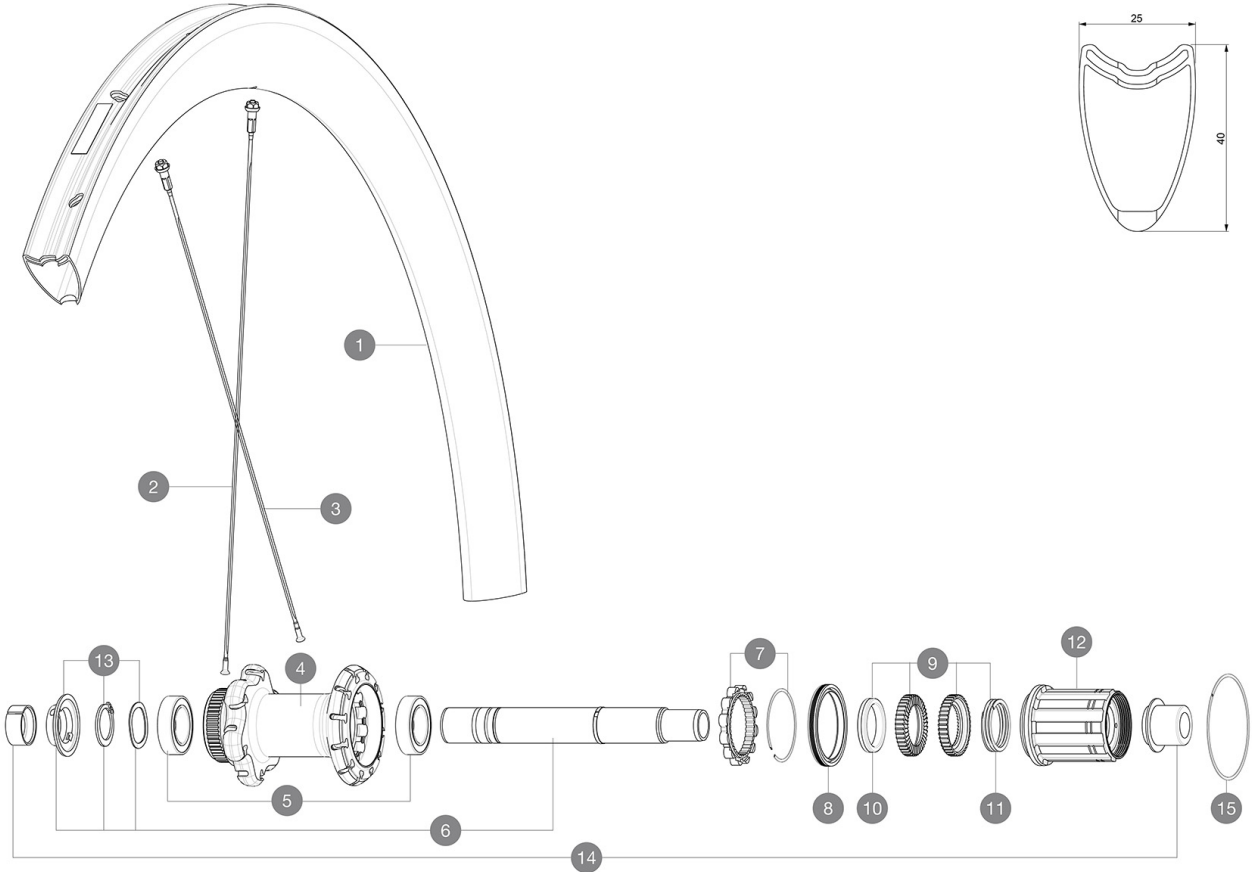


Cosmic Pro Carbon SL T Disc

参照ホイール

R30091 CosProCarb SL T DCL 19 Rr

120mm 32mm
25mm 8.7 bars - 125 psi, 25mm 7.7 bars - 110 psi



RIMS



&NBSP;:

| | | |
|---|----------|---|
| 1 | V2738313 | KIT REAR RIM COSMIC PRO CARBON SL T Disc 19 |
|---|----------|---|

SPOKES

| | | |
|---|----------|--|
| 2 | V3667301 | KIT 12 FRT BUTTED AERO STAINLESS SPOKE 279 + alu nipple + wa |
| 2 | V3667201 | KIT 2 FRT/NDS 279 STAMPED BUTTED AERO STAINLESS SPOKE |
| 3 | V3663901 | KIT 2 NON DRIVE SIDE BUTTED AERO STAINLESS SPOKE 261 + alu |

HUB SHELLS

| | | |
|----|----------|--|
| 4 | N/A | HUB BODY |
| 5 | V2560401 | KIT ID360 2 BEARINGS 17x28x7 + CIRCLIP + WAVED WASHER (QRM |
| 6 | V2373401 | KIT ID360 135/142 DCL L1 AXLE WITH CLIP |
| 7 | V2252701 | KIT ID360 INSERT SHAPED EAR LOBE > 2017 |
| 8 | V2251601 | ID360 SEAL + GREASE |
| 9 | V2251701 | ID360 2 RATCHETS + SPRING + GREASE |
| 10 | V2500501 | Kit 3 ID360 pad for noise reduction |
| 11 | V2251801 | KIT 3 ID360 ROAD SPRINGS |
| 12 | V3430101 | HG11 Freewheel Body ID360 |
| 13 | V2560501 | KIT ADJUST. SYSTEM QRM AUTO ID360 for 17x28x7 bearing |
| 15 | V2252201 | KIT 2 REAR HUB RETENTION RINGS 48mm |

ADAPTERS

| | | |
|----|----------|---|
| 14 | V2510701 | ID360 EVO REAR AXLE ADAPTERS 12x142mm DCL & D6T |
| | V2510901 | ID360 EVO REAR AXLE ADAPTERS 12x135mm DCL & D6T |
| | V2510801 | ID360 EVO REAR AXLE ADAPTERS 9x135mm DCL & D6T |

付属品

| | |
|--|--|
| QR Hub (MTBA) 996 941 01 B41 043 01 | |
| QR Hub (MTBA) 996 941 01 B41 043 01 | |
| 360 QR (B49) 894 01 | |
| 360 QR (B49) 894 01 | |
| | |
| | |

COMPATIBILITY

| | |
|------------------------------|--|
| Disc: 12mm / 15mm QR: XDR | |
| Disc: 12mm / 15mm QR: XDR | |
| Disc: 12mm / 15mm | |
| Disc: 12mm / 15mm | |
| Disc: 12mm / 15mm | |
| Disc: 12mm | |
| Disc: 12mm | |

Specifications

リム

- Rims: 3K A/C 40mm
- Rims: 3K A/C 40mm
- ETRTO 28"
- ETRTO 28"

スポーク

- ABS
- ABS
- 24
- 24
- 24
- 24

ホイールハブ

- Hub: 12mm x 100mm / 15mm x 100mm
- Hub: 12mm x 100mm / 15mm x 100mm
- Hub: 12mm x 142mm / 12x135mm
- Hub: 12mm x 142mm / 12x135mm

VERSIONS

- RA
- RA

ホイールの重み

810