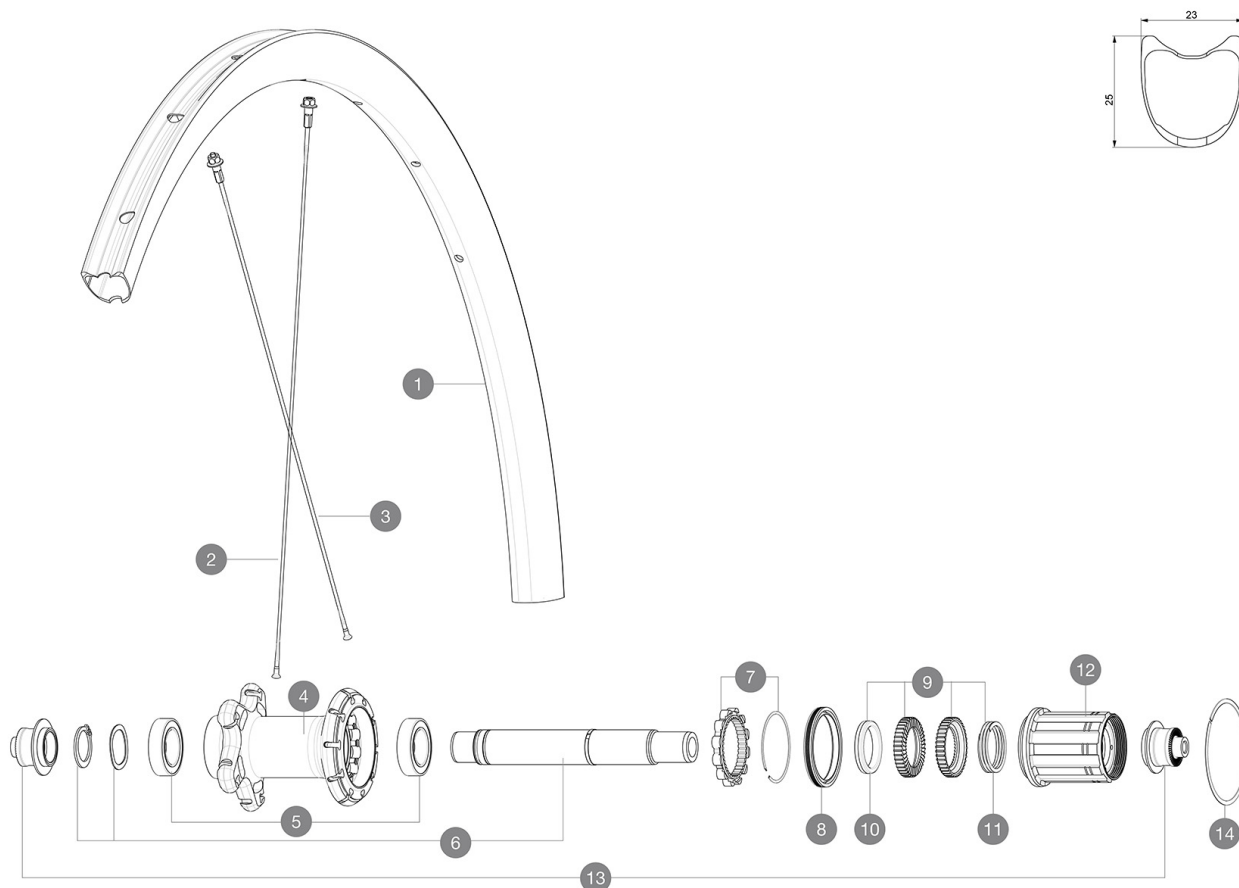


ASTM A2015 2 : 15  
120  
23 32mm  
2  
23mm 8.7 bars - 125 psi, 25mm 7.7 bars - 110 psi

## 参照ホイール

R30461 Ksy Pro Carb SL T 19 Rr NT



### RIMS



&NBSP;:

1	V2738613	KIT REAR RIM KSYRIUM PRO CARBON SL T 19
---	----------	---

### SPOKES

2	V3663701	KIT 12 FRT/NDS BUTTED AERO STAINLESS SPOKE 294 + alu nipple
2	V3667401	KIT 1 FRT 285/1 NDS 294 KSYRIUM PRO CARBON SL T 19 AERO
3	V3667501	KIT 12 DS KPC SL T 19 aero STAINLESS SPOKE 275 + alu nipple

### HUB SHELLS

4	N/A	HUB BODY
5	V2560401	KIT ID360 2 BEARINGS 17x28x7 + CIRCLIP + WAVED WASHER (QRM
6	V2252801	KIT ID360 UB REAR WHEEL AXLE WITH CIRCLIP/WAVE WASHER
7	V2252701	KIT ID360 INSERT SHAPED EAR LOBE > 2017
8	V2251601	ID360 SEAL + GREASE
9	V2251701	ID360 2 RATCHETS + SPRING + GREASE
10	V2500501	Kit 3 ID360 pad for noise reduction
11	V2251801	KIT 3 ID360 ROAD SPRINGS
12	V3430101	HG11 Freewheel Body ID360
14	V2252201	KIT 2 REAR HUB RETENTION RINGS 48mm

### ADAPTERS

13	V2253101	KIT REAR AXLE ADAPTOR QUICK RELEASE ID360
----	----------	---



# Ksyrium Pro Carbon SL T

付属品

BR601 323 485 01 323 486 01	
BR601 323 485 01 323 486 01	
V24 603 01 604 01	
V24 603 01 604 01	
325 423 01	
325 423 01	

COMPATIBILITY

XD-R	

Specifications

**リム**  
 • 3K 25mm  
 • 3K 25mm  
 25mm  
 25mm  
 6.5mm  
 6.5mm  
 28" 28"  
 28" 28"

**スポーク**  
 ABS  
 ABS  
 24  
 24  
 24

**ホイールハブ**  
 QRM+QRM  
 QRM  
 QRM+QRM  
 QRM  
 QRM  
 360  
 360

**ホイールの重み**  
 675

VERSIONS