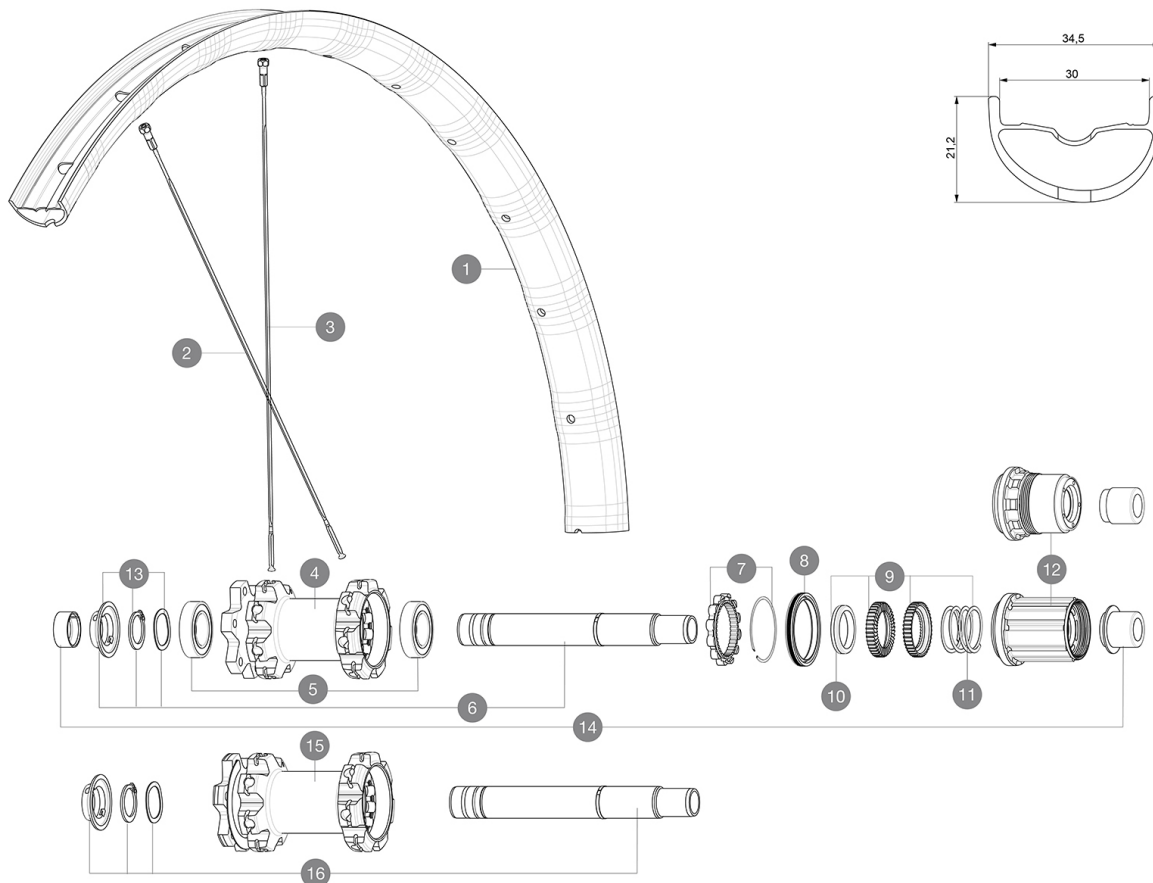


ASTM A242 4 : 60mm x 76mm (2.35" x 3.0")

参照ホイール

R26291	Deemax Elite 27,5 Rr XD	R36491	Deemax Elite 27,5 Rr MS
R26311	Deemax Elite 27,5 Rr Bst Black	R36511	Deemax Elite 27,5 Rr Bst MS
R26321	Deemax Elite 27,5 Rr Boost XD	R26281	Deemax Elite 27,5 Rr



RIMS



&NBSP;:

1	V3763013	KIT REAR RIM DEEMAX ELITE 27,5"
	V3750101	35mm UST Green Tape for 30mm wide rims

SPOKES

2	V3820901	KIT 14 NDS DEEMAX ELITE/E-XA ELITE 19 27,5" FLAT BUTTED SPO
3	V3821001	KIT 14 DS DEEMAX ELITE/E-XA ELITE 19 27,5 FLAT BUTTED SPOKE

HUB SHELLS

4	N/A	HUB BODY
5	M40076	HUB BEARINGS 17x30x7 6903 x 2
6	V2372101	KIT ID360 135/142 D6T AXLE WITH CLIP
7	V2252701	KIT ID360 INSERT SHAPED EAR LOBE > 2017
8	V2251601	ID360 SEAL + GREASE
9	V2375201	KIT ID360 24 TEETH 2 RATCHET + MTB SPRING + PAD (specific)
10	V2375401	KIT ID360 MTB 24T 3 NOISE REDUCING PADS
11	V2372901	KIT 3 ID360 MTB SPRINGS
12	V3780101	HG9 Alloy MTB Freewheel Body ID360
12	V3740101	XD MTB Freewheel Body ID360
13	V2373001	KIT ADJUST. SYSTEM QRM AUTO ID360 for 17x30x7 bearing
15	N/A	HUB BODY
16	V2372201	KIT ID360 148 D6T AXLE WITH CLIP

ADAPTERS

14	V2510701	ID360 EVO REAR AXLE ADAPTERS 12x142mm DCL & D6T
	V2510801	ID360 EVO REAR AXLE ADAPTERS 9x135mm DCL & D6T

MAVIC Deemax Elite

付属品

UST (129 838 01)	
UST (129 838 01)	
308 (308 719 01)	
308 (308 719 01)	

COMPATIBILITY

UST XD	
UST XD	
15mm 20mm	
15mm 20mm	
12mm	
12mm	

Specifications

リム

- 308
- 308 : SUP
- 308 : SUP
- 308 ISM 4D
- 308 ISM 4D
- 6.5mm
- 6.5mm
- UST
- UST
- UST
- 30 mm
- 30 mm
- 27.5" 584x30TSS
- 27.5" 584x30TSS
- 29" 622x30TSS
- 29" 622x30TSS

スポーク

- 28
- 28
- 3A
- 3A

ホイールハブ

- 360
- 360

VERSIONS

- 6A
- 6A
- 110mm
- 148mm
- 100mm
- 135/142mm
- 110mm
- 148mm
- 100mm
- 135/142mm
- XD
- SRAM XD
- HG

ホイールの重み

- Weight Rear 27.5": 1053
- Weight Rear 29": 1102