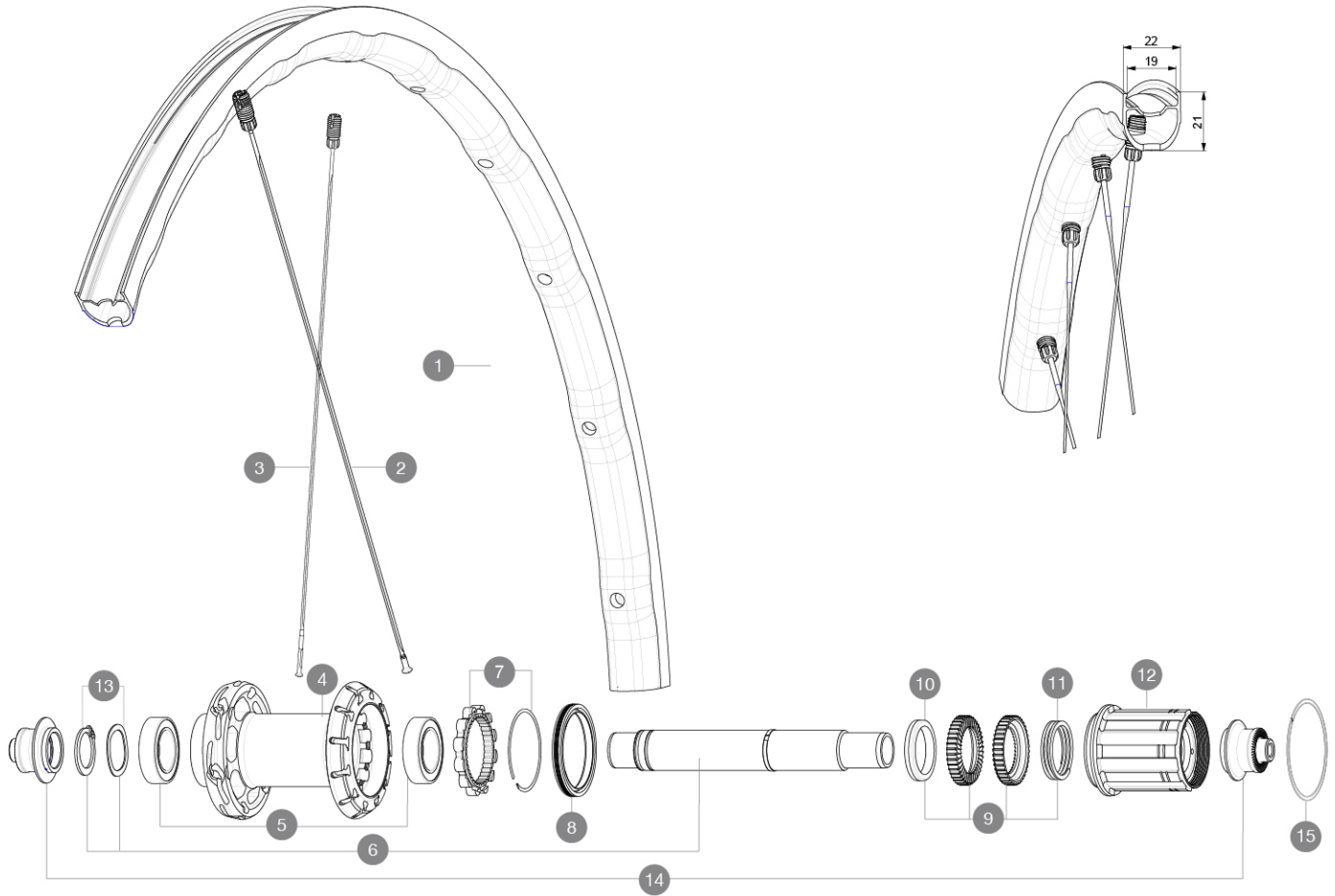


MAVIC KSYRIUM SL

参照ホイール

R36781 KSYRIUM SL RB 700 QR M11

ASTM A21062 : 2015
 23mm-
 6.75Bar/97PSI
 120
 25 32 mm
 2
 Maximum tyre pressure: 6.75bar/97PSI with a 23mm tyre - 3.8bar/55PSI with a 62mm tyre
 62mm-
 3.8Bar/55PSI



RIMS



&NBSP;:

| | | |
|---|----------|----------------------------|
| 1 | V4094013 | Kit Rear rim Ksyrium SL RB |
|---|----------|----------------------------|

SPOKES

| | | |
|---|----------|---|
| 2 | V4164201 | Kit 12 rear Ksyrium SL DS butted spoke 278mm M7/7 |
| 3 | V4164101 | Kit 12 rear Ksyrium SL NDS butted aero spoke 297mm M7/7 |

HUB SHELLS

| | | |
|---|-----------|---|
| 4 | N/A | HUB BODY |
| 5 | V2560401 | KIT ID360 2 BEARINGS 17x28x7 + CIRCLIP + WAVED WASHER (QRM) |
| 6 | V2252801 | KIT ID360 UB REAR WHEEL AXLE WITH CIRCLIP/WAVE WASHER |
| 7 | V2252701 | KIT ID360 INSERT SHAPED EAR LOBE > 2017 |
| 8 | V00063631 | Kit ID360 seal version 2 (larger) |
| 9 | V2251701 | ID360 2 RATCHETS + SPRING + GREASE |

| | | |
|----|----------|---|
| 10 | V2500501 | Kit 3 ID360 pad for noise reduction |
| 11 | V2251801 | KIT 3 ID360 ROAD SPRINGS |
| 12 | V3430101 | HG11 Freewheel Body ID360 |
| 13 | V2560501 | KIT ADJUST. SYSTEM QRM AUTO ID360 for 17x28x7 bearing |
| 15 | V2252201 | KIT 2 REAR HUB RETENTION RINGS 48mm |

ADAPTERS

| | | |
|----|----------|---|
| 14 | V2253101 | KIT REAR AXLE ADAPTOR QUICK RELEASE ID360 |
|----|----------|---|

