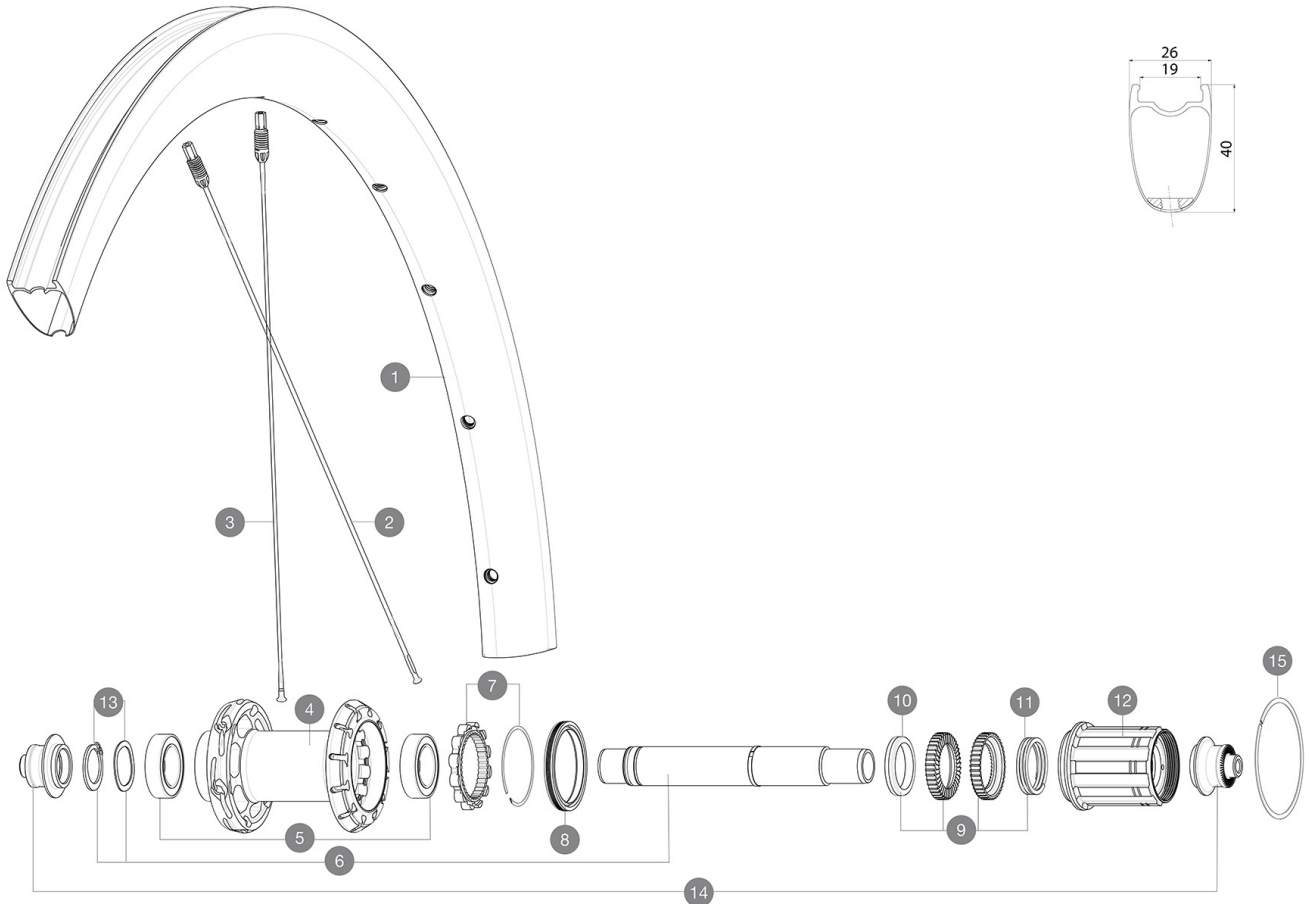


参照ホイール

R40131 COSMIC SLR40 RB 700 QR M11

ASTM A 2106 1 : 23mm-
 6.75Bar/97PSI
 62mm-
 3.8Bar/55PSI
 Maximum tyre pressure: 6.75bar/97PSI with a 23mm tyre - 3.8bar/55PSI with a 62mm tyre



RIMS



&NBSP;:

1	V4094813	Kit Rear rim Cosmic SLR 40 RB
---	----------	-------------------------------

SPOKES

2	V3669401	Kit 12 DS Cosmic SLR40 aero ss spk266 M6
3	V3669301	Kit 12 NDS Cosmic SLR40 aero ss spk285M6

HUB SHELLS

4	N/A	HUB BODY
5	V2560401	KIT ID360 2 BEARINGS 17x28x7 + CIRCLIP + WAVED WASHER (QRM)
6	V2252801	KIT ID360 UB REAR WHEEL AXLE WITH CIRCLIP/WAVE WASHER
7	V2252701	KIT ID360 INSERT SHAPED EAR LOBE > 2017
8	V00063631	Kit ID360 seal version 2 (larger)
9	V2251701	ID360 2 RATCHETS + SPRING + GREASE
10	V2500501	Kit 3 ID360 pad for noise reduction
11	V2251801	KIT 3 ID360 ROAD SPRINGS
12	V3430101	HG11 Freewheel Body ID360
13	V2560501	KIT ADJUST. SYSTEM QRM AUTO ID360 for 17x28x7 bearing
15	V2252201	KIT 2 REAR HUB RETENTION RINGS 48mm

ADAPTERS

14	V2253101	KIT REAR AXLE ADAPTOR QUICK RELEASE ID360
----	----------	---

