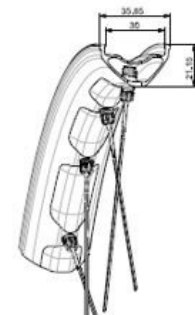
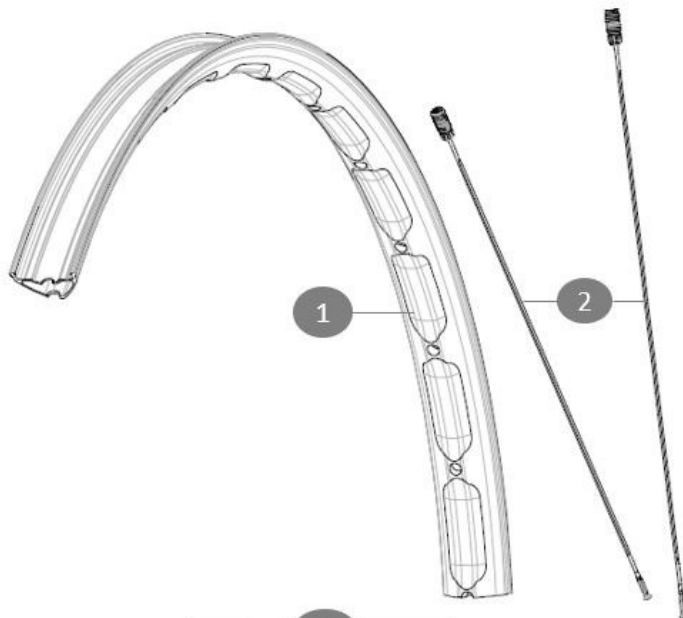


# MAVIC E-DEEMAX S 27.5

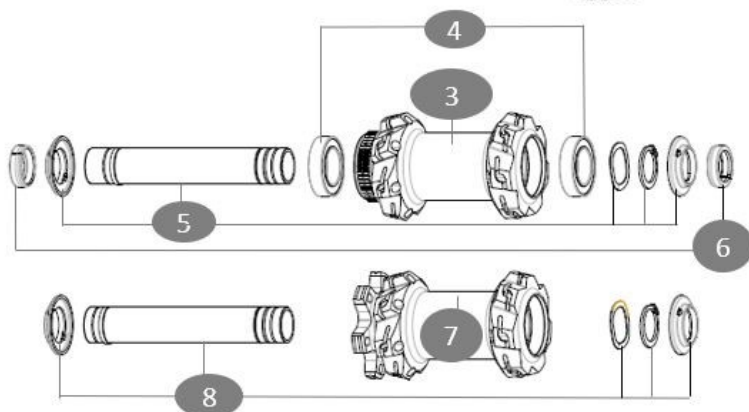
ASTM CATEGORY 5 : GRAVITY RIDING FOCUSED ON THE DESCENT  
 Minimum tyre size: width 52mm - pressure max. 2.95Bar/43PSI  
 Non-Boost : 12 to 9mm rear adapter for quick release (V2510801)  
 For a longer longevity of the wheel, Mavic recommends that the total weight supported by the wheels doesn't exceed 180kg, E-bike included

## REFERENCES WHEELS



Jante avant e-Deemax S WB

| Specifications           | Maxi target   |
|--------------------------|---------------|
| Frontal run out          | 0,5mm         |
| Lateral run out          | 0,5mm         |
| Centrerig                | 1,0mm (2x0,5) |
| Tension daN<br>Disc side | 81 > 107      |



## RIMS



&NBSP;:

|   |           |   |
|---|-----------|---|
| 1 | V00100531 | Kit Front/Rear rim eDeemax S30 24 27,5" |
|---|-----------|---|

## SPOKES

|   |           |  |
|---|-----------|--|
| 2 | V00100931 | Kit 14 steel spokes 286mm eDeemax S30 24 27,5" |
|---|-----------|--|

## HUB SHELLS

|   |          |  |
|---|----------|--|
| 3 | N/A      | HUB BODY                                   |
| 4 | V2500901 | KIT BEARINGS 18x30x7 + WAVED WASHER + CLIP |
| 5 | V2375601 | Kit 110mm axle QRM auto MTB from 2019 DCL  |
| 7 | N/A      | HUB BODY                                   |
| 8 | V2372401 | KIT 110mm AXLE QRM AUTO MTB > 2019         |

## ADAPTERS

|   |          |                                      |
|---|----------|--------------------------------------|
| 6 | V2372501 | 15mm MTB Axle Cap QRM Auto From 2019 |
|---|----------|--------------------------------------|

# MAVIC E-DEEMAX S 27.5

## DELIVERED WITH

|   |  |
|---|--|
| User guide  |  |
| UST valve and accessories<br>(129 838 01)                                   |  |
| Multifunction adjustment wrench (delivered with rear wheel)<br>(325 423 01) |  |
| User guide  |  |
| UST valve and accessories<br>(129 838 01)                                   |  |
| 2 replacement spokes with each wheel  |  |
| Multifunction adjustment wrench (delivered with rear wheel)<br>(325 423 01) |  |
| 2 replacement spokes with each wheel  |  |

## COMPATIBILITY

|   |  |
|---|--|
| Freewheel body: convertible SHIMANO HG MTB aluminium (kit V3780101 sold separately)                         |  |
| Freewheel body: convertible SHIMANO HG MTB aluminium (kit V3780101 sold separately)                         |  |
| Freewheel body: convertible SHIMANO HG MTB steel (kit V3790101 sold separately)                             |  |
| Freewheel body: convertible SHIMANO HG MTB steel (kit V3790101 sold separately)                             |  |
| Boost 20 to 15mm front adapter ([12982801])   |  |
| Front axle: for fixing nuts only (included), M9x1 thread  |  |
| Rear axle adapters: 12x148 convertible to 9x141 (kit V2510801 sold separately)                              |  |
| Rear axle adapters: 12x148 convertible to 9x141 (kit V2510801 sold separately)                              |  |
| Front axle: convertible from 15mm thru axle to Quick Release with adapters (delivered with non-boost wheel) |  |
| Front axle: for fixing nuts only (included), M9x1 thread  |  |

## Specifications

### RIMS

- **Material** : Mxstal
- **Material** : Mxstal
- **Height** : 22 mm
- **Height** : 22 mm
- **Joint** : SUP welding technology
- **Joint** : SUP welding technology
- **Internal width** : 30 mm
- **Internal width** : 30 mm
- **Drilling** : Fore tapeless tubeless technology (front/rear 28 holes)
- **Drilling** : Fore tapeless tubeless technology (front/rear 28 holes)
- Disc brake specific profile
- Disc brake specific profile
- Asymmetrical rim design
- Asymmetrical rim design
- **ETRTO size** : 584x30TC
- **ETRTO size 29"** : 622x30TC
- **Tire** : UST Tubeless and tubetype
- **Tire** : UST Tubeless and tubetype

### SPOKES

- **Material** : steel
- **Material** : steel
- **Shape** : straight pull, round
- **Shape** : straight pull, round
- **Lacing** : front and rear crossed 3
- **Lacing** : front and rear crossed 3
- **Front axle** : convertible from 15mm thru axle to Quick Release with adapters (delivered with non-boost wheel)
- **Boost** : Torque Caps ([V2650401])
- **12mm front hub cap** ([V2680501])

### WHEEL HUB

- **Body** : aluminum
- **Body** : aluminum
- **Body design** : INFINITY
- **Body design** : INFINITY
- **Disc standard** : 6 Bolts or Center Lock®
- **Disc standard** : 6 Bolts or Center Lock®
- **Axle material** : aluminum
- **Axle material** : aluminum
- **Rear body** : aluminum
- **Rear body** : aluminum
- **Axles** : Front 15X110 (Boost) or 15x100 ; Rear 12X148 (Boost) or 12x142
- **Axles** : Front 15X110 (Boost) or 15x100 ; Rear 12X148 (Boost) or 12x142
- **Rear** : Quick Release, 12x142 and 12x135 compatible
- **Rear** : Quick Release, 12x142 and 12x135 compatible
- **Freewheel** : FTS-L steel
- **Freewheel** : FTS-L steel

### WHEEL WEIGHTS

890