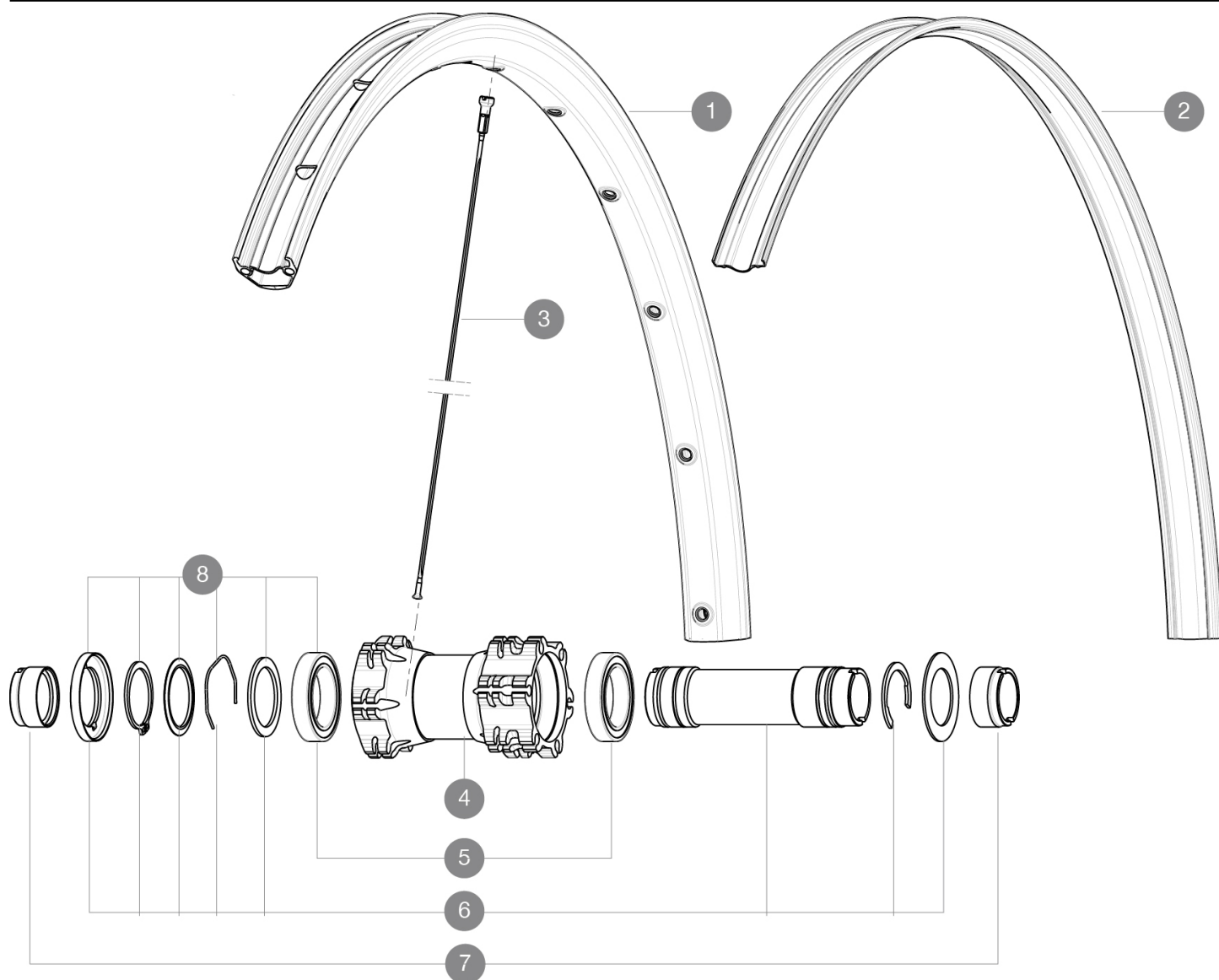


REFERENCES WHEELS

F03101 CrossrocXL26Ft WTS



RIMS



VALVE HOLE \bar{A} (MM): 6.5 :

1	V2311315	KIT FRONT/REAR RIM CROSSROC XL 26"
2	V2170101	UST RIM STRIP 26x21c

SPOKES

3	36675201	KIT 12 FT/NDS CROSSROC 26" SPOKE 263mm
---	----------	--

HUB SHELLS

4	N/A	HUB BODY
5	M40179	FRONT BEARING 25x37x7 20mm AXLE
6	V2370601	KIT FRONT AXLE 20mm CROSSROC XL
8	V2370501	KIT FRONT AUTO ADJUSTING PLAY FOR 20mm AXLE

ADAPTERS

7	12982901	ADAPTER Ft 20x110mm
---	----------	---------------------

MAVIC Crossroc XL WTS

DELIVERED WITH

Tubeless rim tape	
UST valve and accessories	
Valve reducer	
User guide	

Specifications

RIMS

- **Material** : S6000 Aluminum
- **Joint** : pinned
- **Drilling** : traditional with H2 reinforcement
Disc brake specific profile
- **Valve hole diameter** : 8,5 mm with pop off reducer
- **Tyre** : UST Tubeless and tubetype
- **Internal width** : 21 mm
- **ETRTO size 26"** : 559x21C
- **ETRTO size 27.5"** : 584x21C
- **ETRTO size 29"** : 622x21C
- **Recommended tyre sizes** : 2.0 to 2.5

SPOKES

- **Material** : steel
- **Shape** : straight pull, bladed, double butted
- **Nipples** : brass, ABS
- **Count** : 24 front and rear
- **Lacing** : front and rear crossed 2

WHEEL HUB

- **Front and rear bodies** : aluminum
- **Axle material** : aluminum
Sealed cartridge bearings
- **Freewheel** : TS-2 alloy
Shimano 11 speeds compatible
XD Compatible (XX1-X01) with optionnal kit

WHEEL WEIGHTS

- Wheel weight
- Weight Front 26": 840
- Weight Front 27.5": 870
- Weight Front 29": 920