

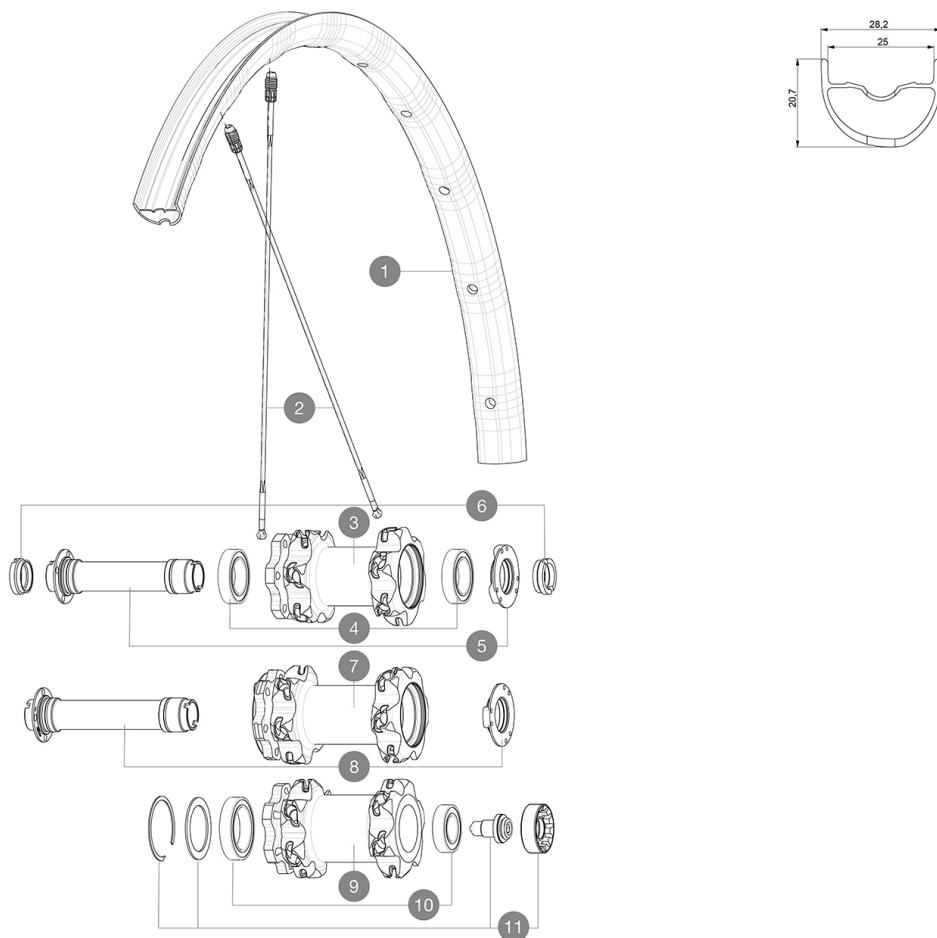
ASTM CATEGORY 3 : CROSS COUNTRY AND TRAIL RIDING

For a longer longevity of the wheel, Mavic recommends that the total weight supported by the wheels don't exceed 120kg, bike included

Recommended tyre sizes: 46mm to 64mm (1.8" to 2.5")

REFERENCES WHEELS

| | | | |
|--------|-------------------------|--------|-----------------------|
| F80311 | Xa Pro 27,5 Ft Bst | P86611 | Xa Pro 27,5 Pr XD |
| F80511 | Xa Pro 27,5 Ft Lefty 60 | P86621 | Xa Pro 27,5 Pr Bst XD |
| P86191 | Xa Pro 27,5 Pr | F80301 | Xa Pro 27,5 Ft |
| P86351 | Xa Pro 27,5 Pr Bst | | |



RIMS



&NBSP;:

| | | |
|---|----------|----------------------------|
| 1 | V2318410 | KIT FRONT RIM XA PRO 27,5" |
|---|----------|----------------------------|

SPOKES

| | | |
|---|----------|--|
| 2 | V2384701 | KIT 12 FT/NDS CROSSMAX PRO 27,5" SPK 275mm |
| 2 | V2385501 | KIT 1 FT/RR XA PRO 27,5" BUTT ALU SPOK 275mm - while stock |

HUB SHELLS

| | | |
|----|----------|---|
| 3 | N/A | HUB BODY |
| 4 | 99688501 | BEARING KIT 9/12/15 D6T HUB 20x32x7 6804 |
| 5 | V2252301 | KIT MY16 FRONT AXLE ROAD DISC 9/12/15 INT |
| 7 | N/A | HUB BODY |
| 8 | V2370701 | KIT FRONT QRM+ AXLE BOOST INTL 110mm |
| 9 | N/A | HUB BODY |
| 10 | M40771 | BEARING KIT FOR LEFTY 50 & 60 HUB |
| 11 | 36709301 | ASSEMBLY KIT FOR LEFTY SUPERMAX WHEELS |

OPTIONS

| | |
|----------|--|
| V2650201 | ADAPTER Front Torque Cap 15x31 MTB QRM + |
|----------|--|

ADAPTERS

| | | |
|---|----------|------------------------|
| 6 | B4104401 | ADAPTER Ft 15mm QRM+ |
| | B4104301 | ADAPTER Ft 9mm QR QRM+ |

DELIVERED WITH

| | |
|---|--|
| UST valve and accessories (129 838 01) | |
| Multifunction adjustment wrench (325 423 01) | |
| User guide | |

COMPATIBILITY

| | |
|---|--|
| Freewheel: Shimano/Sram or XD | |
| Front axle: convertible from 15mm thru axle to Quick Release with optional adapters | |
| Rear axle: 12mm thru axle, convertible to Quick Release with optional adapters | |

Specifications

RIMS

- **Material** : Mxstal
- **Joint** : SUP
- **Drilling** : Fore
- **Weight reduction** : ISM 4D
- **Valve hole diameter** : 6.5 mm
- **Tyre** : UST Tubeless and tubetype
- **Internal width** : 25 mm
- **ETRTO size 27.5"** : 584x25TSS
- **ETRTO size 29"** : 622x25TSS

Hookless profile

SPOKES

- **Material** : Zicral
- **Shape** : straight pull, bladed, front double butted
- **Nipples** : Fore integrated aluminum
- **Count** : 24 front and rear
- **Lacing** : front crossed 2, rear Isopulse
- **Lacing** : front and rear crossed 2

WHEEL HUB

- **Front and rear bodies** : aluminum
 - **Axle material** : aluminum
- Adjustable sealed cartridge bearings (QRM+)
- **Freewheel** : ITS-4 alloy

VERSIONS

- **Color** : Black only
 - **Disc standard** : 6 Bolts only
 - **Hub width** : Boost (front 110, rear 148) or Non-Boost (front 100, rear 135/142)
- Lefty Supermax

WHEEL WEIGHTS

Weight Front 27.5": 745
Weight Front 29": 785