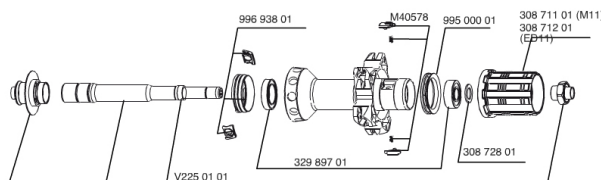
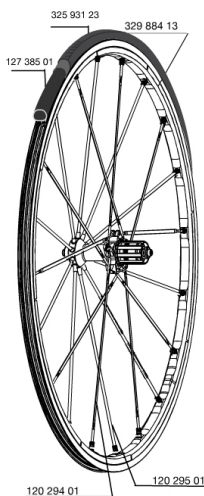


REFERENCES WHEELS

325669 R-SYS SLR 013 ED11 WTS

325668 R-SYS SLR 013 M11 WTS



RIMS



&NBSP;:

32988413 KIT REAR R-SYS SLR CLINCHER 2013 ISM 3D RIM

SPOKES

99693801 2 SILVER TRACOMP RINGS + CLIPS
12029501 KIT 10 NDS R-SYS SLR CLINC BLACK SPOKE 284mm
12029401 KIT 10 DS R-SYS SL/SLR CLINC BLK SPK 294,5mm

HUB SHELLS

30871201 FTS-L ROAD FREEWHEEL BODY ED11 8/9 compatible
32989701 REAR HUB QRM SL BEARINGS 2013
30871101 FTS-L ROAD FREEWHEEL BODY HG11 8/9 compatible
99500001 FTSL/FTSX FREEHUB BODY SEAL
V2250101 KIT REAR AXLE R-SYS SLR
30872801 SET OF 3 INTERNAL SILVER SPACERS 9mm FTS-L
M40578 FTSL PAWLS KIT (ROAD WHEELS)

MAINTENANCE

12738501 Road Innertube Presta 48mm

TYRES

32593123 YksionProSSCPowerLink 23

MAVIC R-Sys SLR C

DELIVERED WITH

| | |
|---------------------------------|--|
| BR601 quick releases | |
| BR601 quick releases | |
| Wheelbags | |
| Wheelbags | |
| Computer magnet (front wheel) | |
| Computer magnet (front wheel) | |
| Multifonction adjustment wrench | |
| Multifonction adjustment wrench | |
| Tracomp ring tool | |
| Tracomp ring tool | |
| User guide | |
| User guide | |

Specifications

RIMS

- **Material** : Mxstal
- **Material** : Mxstal
- **Height** : front 22 mm, rear 25 mm asymmetrical
- **Color** : Exalith
- **Joint** : SUP
- **Height** : front 22 mm, rear 25 mm asymmetrical
- **Joint** : SUP
- **Drilling** : Fore
- **Drilling** : Fore
- **Brake track** : Exalith 2
- **Weight reduction** : ISM 3D
- **Valve hole diameter** : 6.5 mm
- **Brake track** : Exalith 2
- **Tyre** : clincher or tubular
- **Weight reduction** : ISM 3D
- **Valve hole diameter** : 6.5 mm
- **Tyre** : clincher or tubular
- **ETRTO size** : 622x15C
- **ETRTO size** : 622x15C
- **Recommended tyre sizes** : 19 to 32 mm
- **Recommended tyre sizes** : 19 to 32 mm

WHEEL HUB

- **Front and rear bodies** : aluminum
- **Front and rear bodies** : aluminum
- **Color** : black
- **Front and rear axle material** : aluminum
- **Front and rear axle material** : aluminum
- QRM SL
- FTS-L steel
- QRM SL
- FTS-L steel

WHEEL WEIGHTS

Wheel weight 740

SPOKES

Download date: 2024-07-16 / Update date: 2022-03-01

- **Material** : carbon fiber (front and rear non drive side) and Zircal (rear drive side)