

**MAVIC** **E-SPEEDCITY 1 650B****RĂFĂCĂRENCES ROUES**

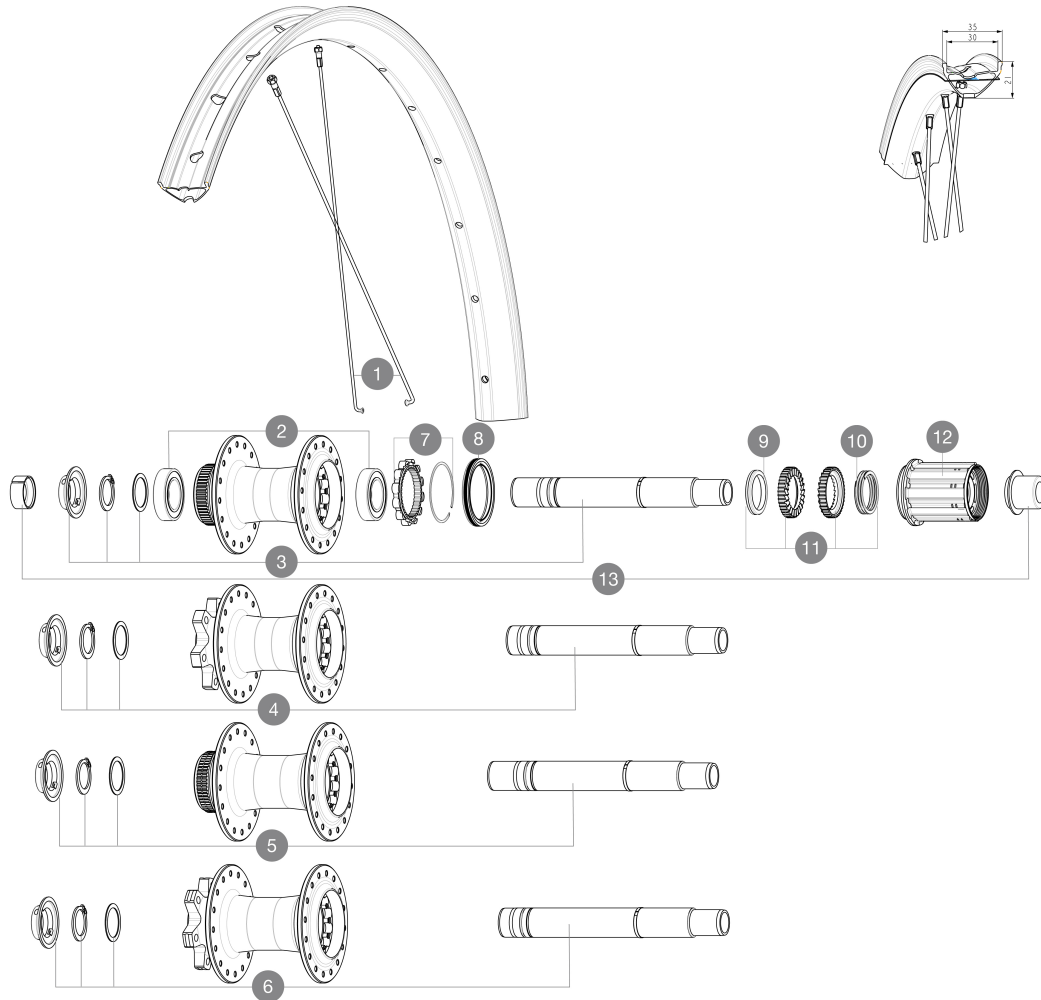
ASTM CATEGORY 2 : road and offroad with jumps less than 15cm

Taille minimale du pneu: largeur 52mm - pression max. 2.35Bar/34PSI

Recommended tire sizes: 50mm to 76mm (2.0" to 3.0")

Taille maximale du pneu: largeur 125mm - pression max. 1.25Bar/18PSI

For a longer longevity of the wheel, Mavic recommends that the total weight supported by the wheels doesn't exceed 180kg, E-bike included

**RAYONS**

**1** V00062531 Kit 16ft/rr Jbent bk rd spk275 27,5"+np

**MOYEUX**

**2** M40076 HUB BEARINGS 17x30x7 6903 x 2  
**3** V2373401 KIT ID360 135/142 DCL L1 AXLE WITH CLIP  
**4** V2372101 KIT ID360 135/142 D6T AXLE WITH CLIP  
**5** V2375701 Kit ID360 148 DCL axle with circlip  
**6** V2372201 KIT ID360 148 D6T AXLE WITH CLIP  
**7** V2252701 KIT ID360 INSERT SHAPED EAR LOBE > 2017  
**8** V00063631 Kit ID360 seal version 2 (larger)  
**9** V2375401 KIT ID360 MTB 24T 3 NOISE REDUCING PADS  
**10** V2372901 KIT 3 ID360 MTB SPRINGS  
**11** V2375201 KIT ID360 24 TEETH 2 RATCHET + MTB SPRING + PAD (specific)  
**12** V3430101 HG11 Freewheel Body ID360

**OPTIONS**

V2373001 KIT ADJUST. SYSTEM QRM AUTO ID360 for 17x30x7 bearing

**ADAPTATEURS**

**13** V2510701 ID360 EVO REAR AXLE ADAPTERS 12x142mm DCL & D6T  
 V2510901 ID360 EVO REAR AXLE ADAPTERS 12x135mm DCL & D6T  
 V2510801 ID360 EVO REAR AXLE ADAPTERS 9x135mm DCL & D6T

**MAVIC E-SPEEDCITY 1 650B****LIVRE AVEC**

User guide	
Fond de jante tubeless prêt à installer	
Rondelle de cassette M9 non montée sur la roue arrière	
Rondelle de cassette M9 non montée sur la roue arrière	
User guide	
User guide	
Fond de jante tubeless prêt à installer	

**COMPATIBILITE**

Freewheel: Shimano/Sram, convertible to Campagnolo ED11, N3W and XD-R with optional driver bodies	
Front axle: 12mm thru axle, easily convertible to quick release with optional adapters. Convertible to 15mm with complete axle replacement	
Rear axle: 12mm thru axle, convertible to Quick Release with optional adapters and axle replacement	
Corps de roue libre: convertible SRAM XD route (kit V2580101 vendu séparément)	
Corps de roue libre: convertible SRAM XD route (kit V2580101 vendu séparément)	
Corps de roue libre: convertible SHIMANO HG light route (kit V3850101 vendu séparément)	
Corps de roue libre: convertible SHIMANO HG light route (kit V3850101 vendu séparément)	
Corps de roue libre: convertible SHIMANO MS (kit V3990101 vendu séparément)	
Corps de roue libre: convertible SHIMANO MS (kit V3990101 vendu séparément)	
Front axle: 12mm thru axle, easily convertible to quick release with optional adapters. Convertible to 15mm with complete axle replacement	
Front axle: 12mm thru axle, easily convertible to quick release with optional adapters. Convertible to 15mm with complete axle replacement	
Corps de roue libre: convertible CAMPAGNOLO N3W (kit V4270101 vendu séparément)	
Corps de roue libre: convertible CAMPAGNOLO N3W (kit V4270101 vendu séparément)	
ID360 Shimano Micro Spline alloy freewheel body (V3990101)	
Corps de roue libre ID360 Sram XD (V3740101)	
Axe arrière : fixation par écrou uniquement (fournis), filetage M9x1	
Axe arrière : fixation par écrou uniquement (fournis), filetage M9x1	
ID360 Shimano Micro Spline alloy freewheel body (V3990101)	