

MAVIC **E-SPEEDCITY 1 700**

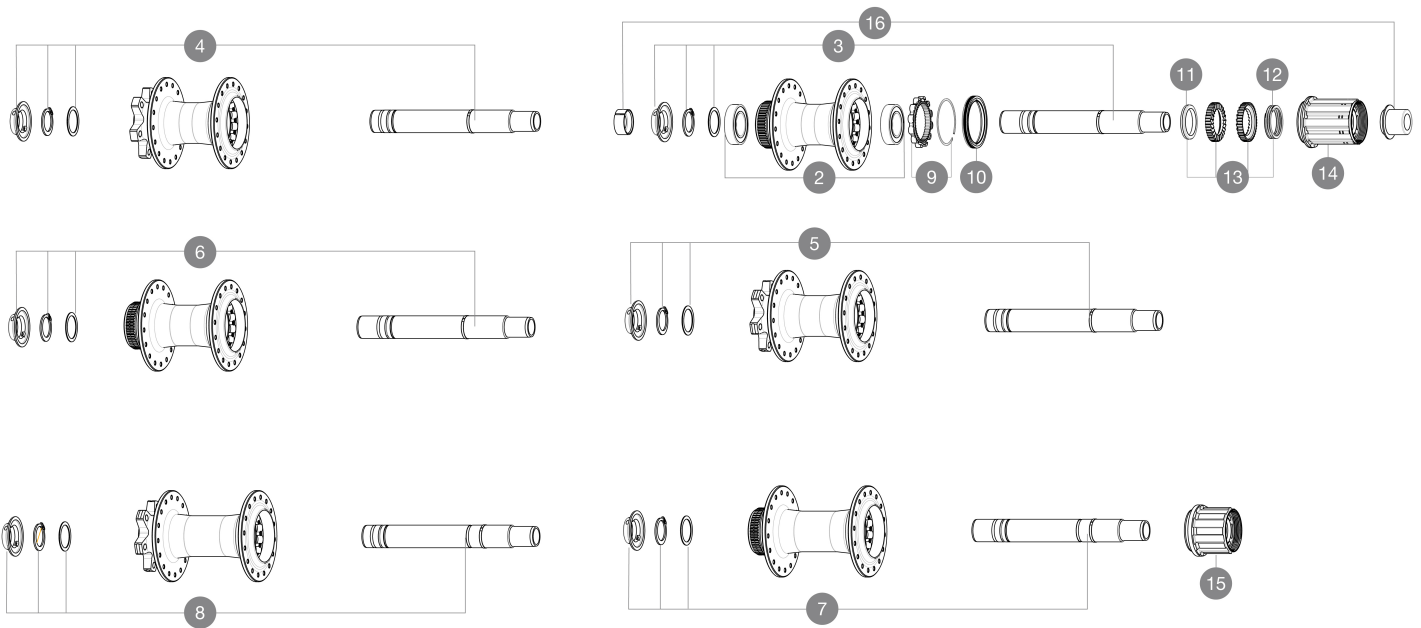
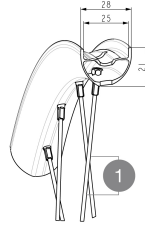
ASTM CATEGORY 2 : road and offroad with jumps less than 15cm

VR-Achse: umrÄ/4stbar von 15-mm-Steckachse auf Schnellspanner (mit beiliegenden Adaptern)

Recommended tire sizes: 28 to 64 mm (1.1" to 2.5")

Boost: Torque Cap-Achsstummel (V2374401)

For a longer longevity of the wheel, Mavic recommends that the total weight supported by the wheels doesn't exceed 180kg, E-bike included

REFERENZEN RÄPDER**SPOKES**

| | | |
|----------|-----------|---|
| 1 | V00062431 | Kit 16 ft/rr Jbent bk rd spk 293 29"+np |
|----------|-----------|---|

HUB SHELLS

| | | |
|-----------|-----------|--|
| 2 | M40076 | HUB BEARINGS 17x30x7 6903 x 2 |
| 4 | V2372101 | KIT ID360 135/142 D6T AXLE WITH CLIP |
| | V2372201 | KIT ID360 148 D6T AXLE WITH CLIP |
| 6 | V2375701 | Kit ID360 148 DCL axle with circlip |
| 7 | V2373401 | KIT ID360 135/142 DCL L1 AXLE WITH CLIP |
| 9 | V2252701 | KIT ID360 INSERT SHAPED EAR LOBE > 2017 |
| 10 | V00063631 | Kit ID360 seal version 2 (larger) |
| 11 | V2375401 | KIT ID360 MTB 24T 3 NOISE REDUCING PADS |
| 12 | V2372901 | KIT 3 ID360 MTB SPRINGS |
| 13 | V2375201 | KIT ID360 24 TEETH 2 RATCHET + MTB SPRING + PAD (specific) |
| 14 | V3430101 | HG11 Freewheel Body ID360 |

OPTIONS

| | |
|----------|---|
| V2373001 | KIT ADJUST. SYSTEM QRM AUTO ID360 for 17x30x7 bearing |
|----------|---|

ADAPTERS

| | | |
|-----------|----------|---|
| 16 | V2510701 | ID360 EVO REAR AXLE ADAPTERS 12x142mm DCL & D6T |
| | V2510901 | ID360 EVO REAR AXLE ADAPTERS 12x135mm DCL & D6T |
| | V2510801 | ID360 EVO REAR AXLE ADAPTERS 9x135mm DCL & D6T |

MAVIC E-SPEEDCITY 1 700

GELIEFERT MIT

| | |
|---|--|
| User guide | |
| Kassettenunterlegscheibe M9 nicht am Hinterrad montiert | |
| Felgenband | |
| Kassettenunterlegscheibe M9 nicht am Hinterrad montiert | |
| User guide | |
| User guide | |
| Felgenband | |

COMPATIBILITY

| | |
|--|--|
| Freewheel: Shimano/Sram, convertible to Campagnolo ED11, N3W and XD-R with optional driver bodies | |
| Front axle: 12mm thru axle, easily convertible to quick release with optional adapters. Convertible to 15mm with complete axle replacement | |
| Freilaufkörper: SRAM XD Straeve-Konverter (Kit V2580101 separat erhältlich) | |
| Freilaufkörper: SRAM XD Straeve-Konverter (Kit V2580101 separat erhältlich) | |
| Rear axle: 12mm thru axle, convertible to Quick Release with optional adapters and axle replacement | |
| Freilaufkörper: SHIMANO HG light Straeve-Konverter (Kit V3850101 separat erhältlich) | |
| Freilaufkörper: SHIMANO HG light Straeve-Konverter (Kit V3850101 separat erhältlich) | |
| Freilaufkörper: SHIMANO MS-Konverter (Kit V3990101 separat erhältlich) | |
| Freilaufkörper: SHIMANO MS-Konverter (Kit V3990101 separat erhältlich) | |
| Front axle: 12mm thru axle, easily convertible to quick release with optional adapters. Convertible to 15mm with complete axle replacement | |
| Front axle: 12mm thru axle, easily convertible to quick release with optional adapters. Convertible to 15mm with complete axle replacement | |
| Freilaufkörper: CAMPAGNOLO N3W-Konverter (Kit V4270101 separat erhältlich) | |
| Freilaufkörper: CAMPAGNOLO N3W-Konverter (Kit V4270101 separat erhältlich) | |
| ID360 Shimano Micro Spline alloy freewheel body (V3990101) | |
| Instant Drive 360-Freilaufkörper für Sram XD-Ritzelkassetten (V3740101) | |
| HR-Achse: nur 1/4r Schraubmuttern (im Lieferumfang enthalten), M10x1-Gewinde | |
| ID360 Shimano Micro Spline alloy freewheel body (V3990101) | |
| Rear axle: 12mm thru axle, convertible to Quick Release with adapters (delivered with non-boost wheel) | |