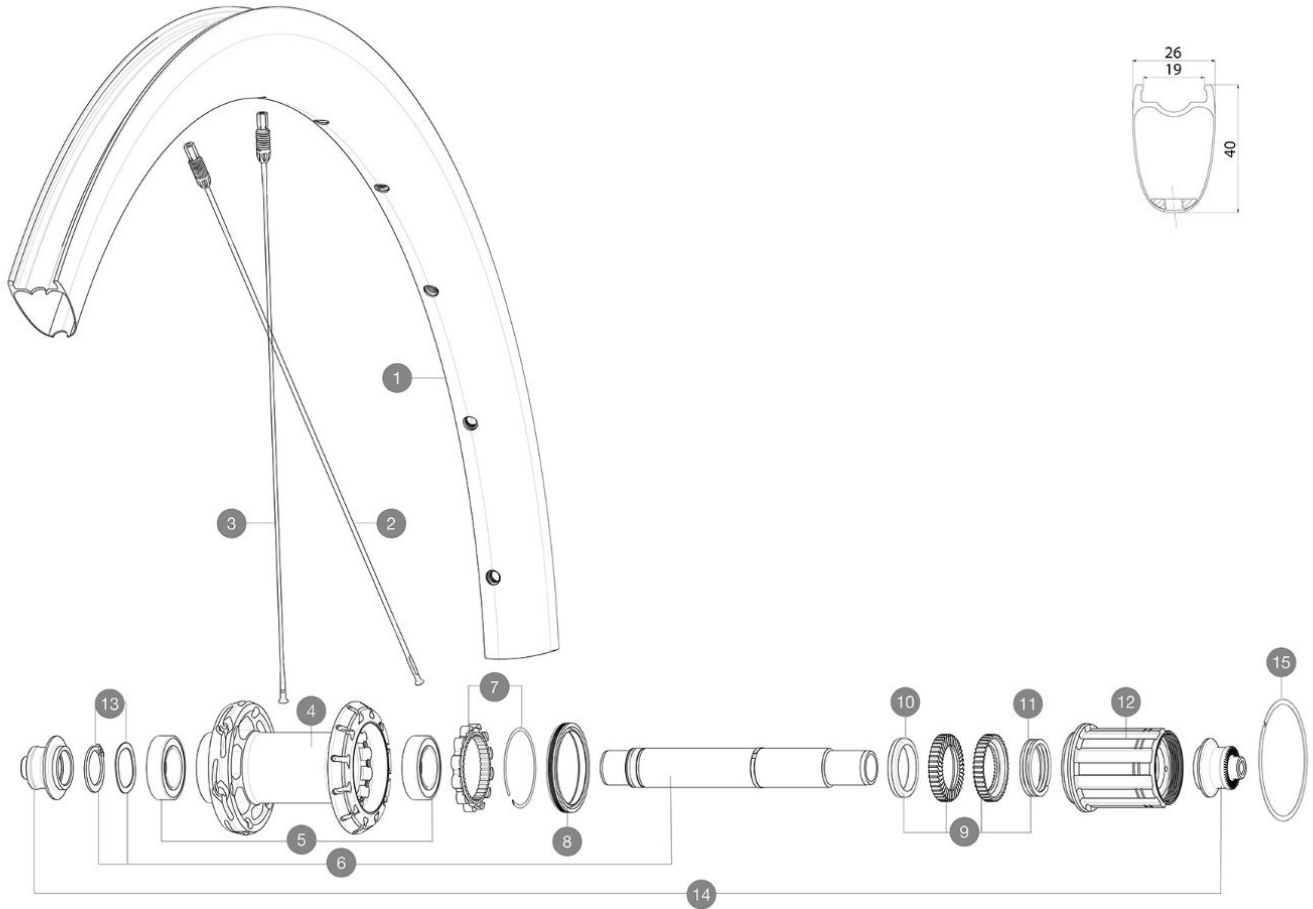


ASTM CATEGORY 1 : road only

REFERENZEN RÄDER



RIMS



&NBSP;:

| | | |
|---|-----------|-------------------------------|
| 1 | V00063109 | Kit Rear rim Cosmic SLR40 Ltd |
|---|-----------|-------------------------------|

SPOKES

| | | |
|---|----------|--|
| 2 | V3669401 | Kit 12 DS Cosmic SLR40 aero ss spk266 M6 |
| 3 | V3669301 | Kit 12 NDS Cosmic SLR40 aero ss spk285M6 |

HUB SHELLS

| | | |
|----|-----------|--|
| 4 | N/A | NABENKÖRPER |
| 5 | V2560401 | KIT ID360 2 BEARINGS 17x28x7 + CIRCLIP + WAVED WASHER (QRM A |
| 6 | V2252801 | KIT ID360 UB REAR WHEEL AXLE WITH CIRCLIP/WAVE WASHER |
| 7 | V2252701 | KIT ID360 INSERT SHAPED EAR LOBE > 2017 |
| 8 | V00063631 | Kit ID360 seal version 2 (larger) |
| 9 | V2251701 | ID360 2 RATCHETS + SPRING + GREASE |
| 10 | V2500501 | Kit 3 ID360 pad for noise reduction |
| 11 | V2251801 | KIT 3 ID360 ROAD SPRINGS |
| 12 | V3430101 | HG11 Freewheel Body ID360 |
| 13 | V2560501 | KIT ADJUST. SYSTEM QRM AUTO ID360 for 17x28x7 bearing |
| 15 | V2252201 | KIT 2 REAR HUB RETENTION RINGS 48mm |

ADAPTERS

| | | |
|----|----------|---|
| 14 | V2253101 | KIT REAR AXLE ADAPTOR QUICK RELEASE ID360 |
|----|----------|---|

MAVIC **COSMIC SLR 40 LTD****GELIEFERT MIT**

| | |
|---|--|
| BR301 quick releases (V24 501 01 frt, V24 502 01 rear) | |
| Carbon brake pads (V24 603 01 Shimano/Sram, V24 604 01 Campagnolo) | |
| UST valve and accessories (129 838 01) | |
| User guide | |

COMPATIBILITY

| | |
|---|--|
| Freewheel: Shimano/Sram, convertible to Campagnolo ED11, N3W and XD-R with optional driver bodies | |
|---|--|

Specifications**FELGEN**

- **Material** : 100% carbon fiber
 - **Height** : 40 mm
 - **Valve hole diameter** : 6.5 mm
 - **Tire** : UST Tubeless and tubetype
 - **Internal width** : 19 mm
 - **ETRTO size** : 622x19TC
- Fore Carbon tapeless tubeless technology
UST Tubeless Ready

SPEICHEN

- **Material** : steel
 - **Shape** : straight pull, elliptical aero, double butted (patented)
 - **Nipples** : Fore integrated aluminum
 - **Count** : front 18, rear 24
 - **Lacing** : front radial, rear Isopulse
- Isopulse lacing design

RADNABE

- **Front and rear bodies** : aluminum
 - **Axle material** : aluminum
- Instant Drive 360 freewheel technology
QRM Auto bearing preload technology

VERSIONS

- **Freewheel** : Shimano/Sram

RADGEWICHTE

750