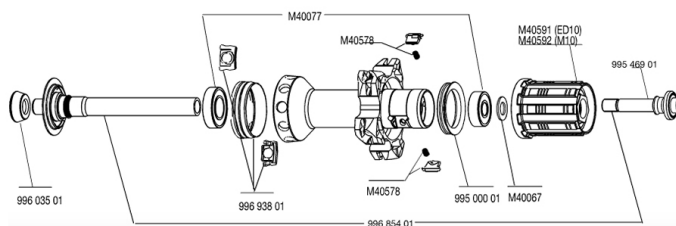


## REFERENZEN RÄDER

111990	R-SYS SLR M10 WTS	120059	R-SYS SLR M10 PR WTS
111991	R-SYS SLR ED11 WTS	120060	R-SYS SLR ED11 PR WTS
111996	R-SYS SLR TUBULAR M10 WTS	120061	R-SYS SLR TUBULAR M10 PR WTS
111997	R-SYS SLR TUBULAR ED11 WTS	120062	R-SYS SLR TUBULAR ED11PR WTS



## RIMS



&NBSP::

12020613	REAR R-SYS SLR CLINCHER RIM
99685401	R-SYS PREMIUM REAR AXLE
12020413	REAR R-SYS SLR TUBULAR RIM

## SPOKES

12029401	10 BLK DRIVE SIDE SPOKES R-SYS SLR CLINCH.294mm
12029201	10 BLACK DRIVE SIDE SPOKES R-SYS SLR TUB.297mm
12029501	10 BLK OPP.DRIVE SIDE SPK R-SYS SLR CLINCH.284mm
99693801	2 SILVER TRACOMP RINGS + CLIPS

## HUB SHELLS

99500001	FTSL/FTSX FREEHUB BODY SEAL
M40578	FTSL PAWLS KIT (ROAD WHEELS)
99603501	R.FORK SUPPORT COS.CARB.ULTIMATE
M40592	CORPS DE ROUE LIBRE FTS "L" M10
M40067	10 SPACERS FRW/HUB BODY
99546901	REAR TITANIUM BOLT M10/ED10
M40591	CORPS DE ROUE LIBRE FTS "L" ED10

## MAINTENANCE

11104001	Chambres à air 48mm
----------	---------------------

## TYRES

11849101	Yksion PowerLink Tubular 23
11849801	Yksion GripLink 23

# **MAVIC** *R-Sys SLR*

## ***Specifications***

RADGEWICHTE