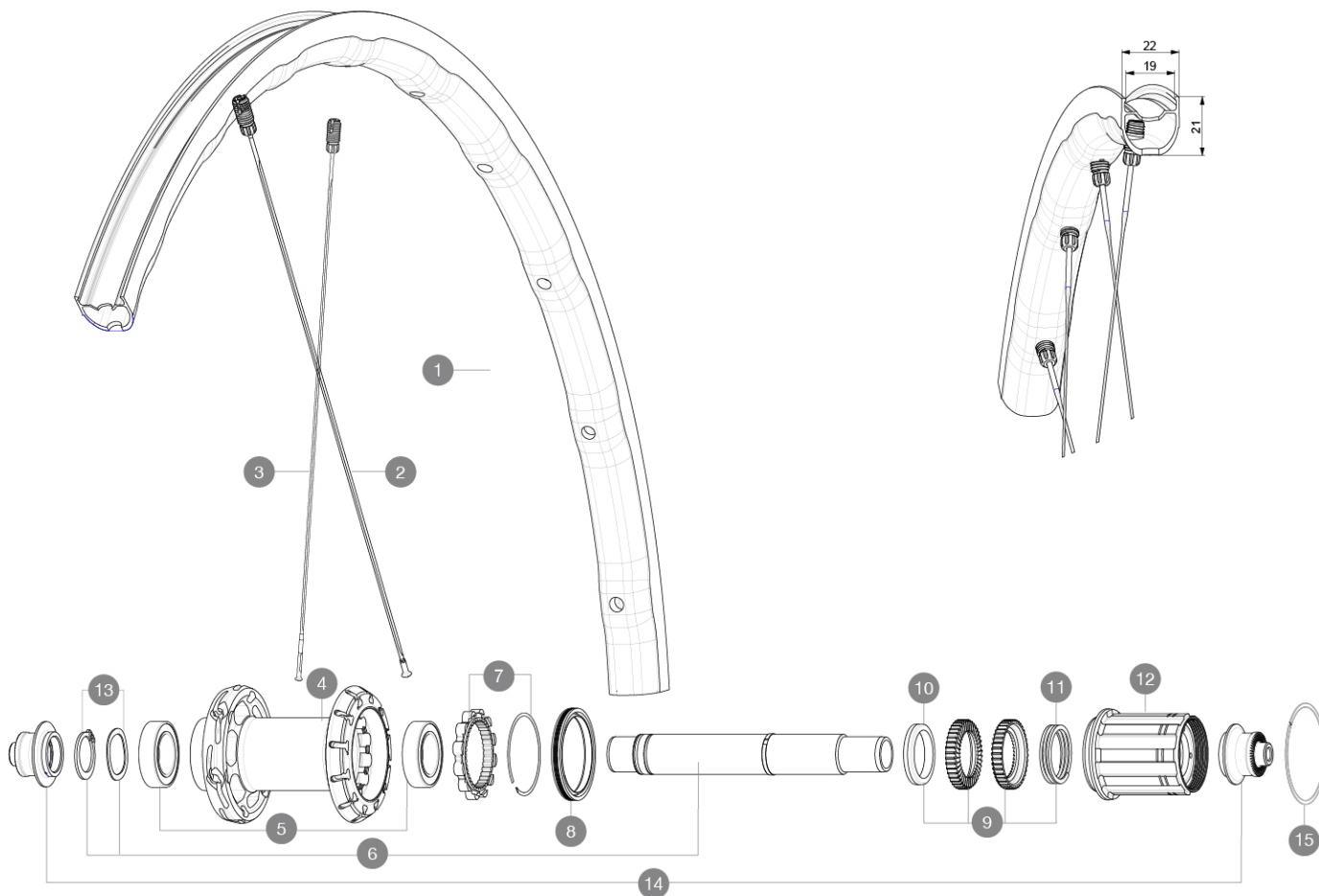


ASTM CATEGORY 2 : road and offroad with jumps less than 15cm  
 Mindestgröße des Reifens: Breite 23mm - max. Druck 6.75Bar/97PSI  
 For a longer longevity of the wheel, Mavic recommends that the total weight supported by the wheels doesn't exceed 120kg, bike included  
 Recommended tyre sizes: 25 to 32 mm  
 Max. Pressure: see indication on wheel and tyre. If they differ, use the lowest of the 2  
 Maximum tyre pressure: 6.75bar/97PSI with a 23mm tyre - 3.8bar/55PSI with a 62mm tyre  
 Maximale Reifengröße: Breite 62mm - max. Druck 3.8Bar/55PSI

## REFERENZEN RÄDER

R36781 KSYRIUM SL RB 700 QR M11



### RIMS



&NBSP;:

1 V4094013 Kit Rear rim Ksyrium SL RB

### SPOKES

2 V4164201 Kit 12 rear Ksyrium SL DS butted spoke 278mm M7/7  
 3 V4164101 Kit 12 rear Ksyrium SL NDS butted aero spoke 297mm M7/7

### HUB SHELLS

4 N/A NABENKÖRPER  
 5 V2560401 KIT ID360 2 BEARINGS 17x28x7 + CIRCLIP + WAVED WASHER (QRM A)  
 6 V2252801 KIT ID360 UB REAR WHEEL AXLE WITH CIRCLIP/WAVE WASHER  
 7 V2252701 KIT ID360 INSERT SHAPED EAR LOBE > 2017  
 8 V00063631 Kit ID360 seal version 2 (larger)  
 9 V2251701 ID360 2 RATCHETS + SPRING + GREASE  
 10 V2500501 Kit 3 ID360 pad for noise reduction  
 11 V2251801 KIT 3 ID360 ROAD SPRINGS  
 12 V3430101 HG11 Freewheel Body ID360  
 13 V2560501 KIT ADJUST. SYSTEM QRM AUTO ID360 for 17x28x7 bearing

15 V2252201 KIT 2 REAR HUB RETENTION RINGS 48mm

### ADAPTERS

14 V2253101 KIT REAR AXLE ADAPTOR QUICK RELEASE ID360

**GELIEFERT MIT**

User guide	
1 Flasche Mavic Sealant (beim Hinterrad) (355 466 01)	
BR301 quick releases (V24 501 01 frt, V24 502 01 rear)	
BR301 quick releases (V24 501 01 frt, V24 502 01 rear)	
BR301 quick releases (V24 501 01 frt, V24 502 01 rear)	
BR301 quick releases (V24 501 01 frt, V24 502 01 rear)	
BR301 quick releases (V24 501 01 frt, V24 502 01 rear)	
UST valve and accessories (129 838 01)	
UST valve and accessories (129 838 01)	
UST valve and accessories (129 838 01)	
UST valve and accessories (129 838 01)	
Multifunktions-Einstellschlüssel (325 423 01)	
User guide	
User guide	
User guide	
User guide	
UST valve and accessories (129 838 01)	

**COMPATIBILITY**

Freewheel: Shimano/Sram, convertible to Campagnolo and XD-R with optional driver bodies	
Freewheel: Shimano/Sram, convertible to Campagnolo and XD-R with optional driver bodies	
Freewheel: Shimano/Sram, convertible to Campagnolo and XD-R with optional driver bodies	
Front axle: Quick Release only	
Front axle: Quick Release only	
Front axle: Quick Release only	
Rear axle: Quick Release only	
Freilaufkörper: SRAM XD Straize-Konverter (Kit V2580101 separat erhältlich)	
Rear axle: Quick Release only	
Freilaufkörper: SRAM XD Straize-Konverter (Kit V2580101 separat erhältlich)	
Rear axle: Quick Release only	
Freilaufkörper: SHIMANO HG light Straize-Konverter (Kit V3850101 separat erhältlich)	
Freilaufkörper: SHIMANO HG light Straize-Konverter (Kit V3850101 separat erhältlich)	
Freilaufkörper: SHIMANO MS-Konverter (Kit V3990101 separat erhältlich)	
Freilaufkörper: SHIMANO MS-Konverter (Kit V3990101 separat erhältlich)	
Freilaufkörper: CAMPAGNOLO ED-Konverter (Kit V3440101 separat erhältlich)	
Freilaufkörper: CAMPAGNOLO ED-Konverter (Kit V3440101 separat erhältlich)	
Freilaufkörper: CAMPAGNOLO N3W-Konverter (Kit V4270101 separat erhältlich)	