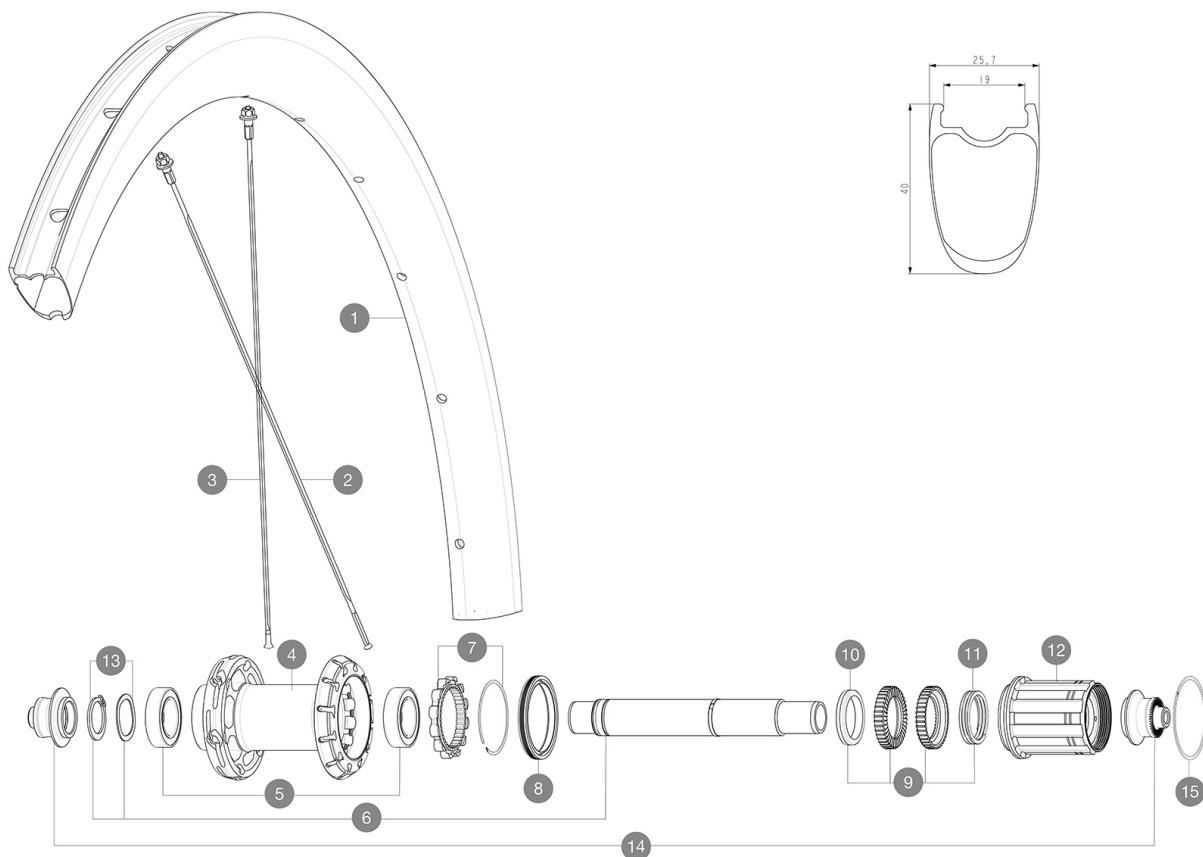


ASTM CATEGORY 1 : road only
 Mindestgröße des Reifens: Breite 23mm - max. Druck 6.75Bar/97PSI
 For a longer longevity of the wheel, Mavic recommends that the total weight supported by the wheels doesn't exceed 120kg, bike included
 Recommended tyre sizes: 25 to 32 mm
 Max. Pressure: see indication on wheel and tyre. If they differ, use the lowest of the 2
 Maximum tyre pressure: 6.75bar/97PSI with a 23mm tyre - 3.8bar/55PSI with a 62mm tyre
 Maximale Reifengröße: Breite 62mm - max. Druck 3.8Bar/55PSI

REFERENZEN RÄDER

R36731 COSMIC SL 40 RB 700 QR M11



RIMS



| | | |
|---|----------|--|
| 1 | V4092713 | Kit Rear rim Cosmic SL 40 RB |
| | V3720101 | 25mm UST Tape for 19 to 22mm Road Rims |

SPOKES

| | | |
|---|----------|--|
| 2 | V4161601 | Kit 12 rear DS butted stainless spoke 260mm Com Pro Carbon U |
| 3 | V4162801 | Kit 12 rear NDS Cosmic SL 40 RB butted stainless spoke 280mm |

HUB SHELLS

| | | |
|----|-----------|--|
| 4 | N/A | NABENKÖRPER |
| 5 | V2560401 | KIT ID360 2 BEARINGS 17x28x7 + CIRCLIP + WAVED WASHER (QRM A |
| 6 | V2252801 | KIT ID360 UB REAR WHEEL AXLE WITH CIRCLIP/WAVE WASHER |
| 7 | V2252701 | KIT ID360 INSERT SHAPED EAR LOBE > 2017 |
| 8 | V00063631 | Kit ID360 seal version 2 (larger) |
| 9 | V2251701 | ID360 2 RATCHETS + SPRING + GREASE |
| 10 | V2500501 | Kit 3 ID360 pad for noise reduction |
| 11 | V2251801 | KIT 3 ID360 ROAD SPRINGS |
| 12 | V3430101 | HG11 Freewheel Body ID360 |
| 13 | V2560501 | KIT ADJUST. SYSTEM QRM AUTO ID360 for 17x28x7 bearing |
| 15 | V2252201 | KIT 2 REAR HUB RETENTION RINGS 48mm |

ADAPTERS

| | | |
|----|----------|---|
| 14 | V2253101 | KIT REAR AXLE ADAPTOR QUICK RELEASE ID360 |
|----|----------|---|

GELIEFERT MIT

| | |
|---|--|
| 1 Flasche Mavic Sealant (beim Hinterrad) (355 466 01) | |
| User guide | |
| BR301 quick releases (V24 501 01 frt, V24 502 01 rear) | |
| BR301 quick releases (V24 501 01 frt, V24 502 01 rear) | |
| BR301 quick releases (V24 501 01 frt, V24 502 01 rear) | |
| BR301 quick releases (V24 501 01 frt, V24 502 01 rear) | |
| BR301 quick releases (V24 501 01 frt, V24 502 01 rear) | |
| Carbon brake pads (V24 603 01 Shimano/Sram, V24 604 01 Campagnolo) | |
| Carbon brake pads (V24 603 01 Shimano/Sram, V24 604 01 Campagnolo) | |
| Carbon brake pads (V24 603 01 Shimano/Sram, V24 604 01 Campagnolo) | |
| Carbon brake pads (V24 603 01 Shimano/Sram, V24 604 01 Campagnolo) | |
| Carbon brake pads (V24 603 01 Shimano/Sram, V24 604 01 Campagnolo) | |
| UST valve and accessories (129 838 01) | |
| UST valve and accessories (129 838 01) | |
| UST valve and accessories (129 838 01) | |
| UST valve and accessories (129 838 01) | |
| Pre-installed tubeless rim tape | |
| Pre-installed tubeless rim tape | |

COMPATIBILITY

| | |
|--|--|
| Freewheel: Shimano/Sram, convertible to Campagnolo and XD-R with optional driver bodies | |
| Freewheel: Shimano/Sram, convertible to Campagnolo and XD-R with optional driver bodies | |
| Freewheel: Shimano/Sram, convertible to Campagnolo and XD-R with optional driver bodies | |
| Front axle: Quick Release only | |
| Front axle: Quick Release only | |
| Front axle: Quick Release only | |
| Freilaufkörper: SRAM XD StraÄe-Konverter (Kit V2580101 separat erhältlich) | |
| Rear axle: Quick Release only | |
| Rear axle: Quick Release only | |
| Rear axle: Quick Release only | |
| Freilaufkörper: SRAM XD StraÄe-Konverter (Kit V2580101 separat erhältlich) | |
| Freilaufkörper: SHIMANO HG light StraÄe-Konverter (Kit V3850101 separat erhältlich) | |
| Freilaufkörper: SHIMANO HG light StraÄe-Konverter (Kit V3850101 separat erhältlich) | |
| Freilaufkörper: SHIMANO MS-Konverter (Kit V3990101 separat erhältlich) | |
| Freilaufkörper: SHIMANO MS-Konverter (Kit V3990101 separat erhältlich) | |
| Freilaufkörper: CAMPAGNOLO ED-Konverter (Kit V3440101 separat erhältlich) | |
| Freilaufkörper: CAMPAGNOLO ED-Konverter (Kit V3440101 separat erhältlich) | |
| Instant Drive 360 The new Instant Drive 360 freewheel system is super light and fast to engage with only 9°. A large contactless rubber seal provides low friction, while a wide array of end caps makes it super | |