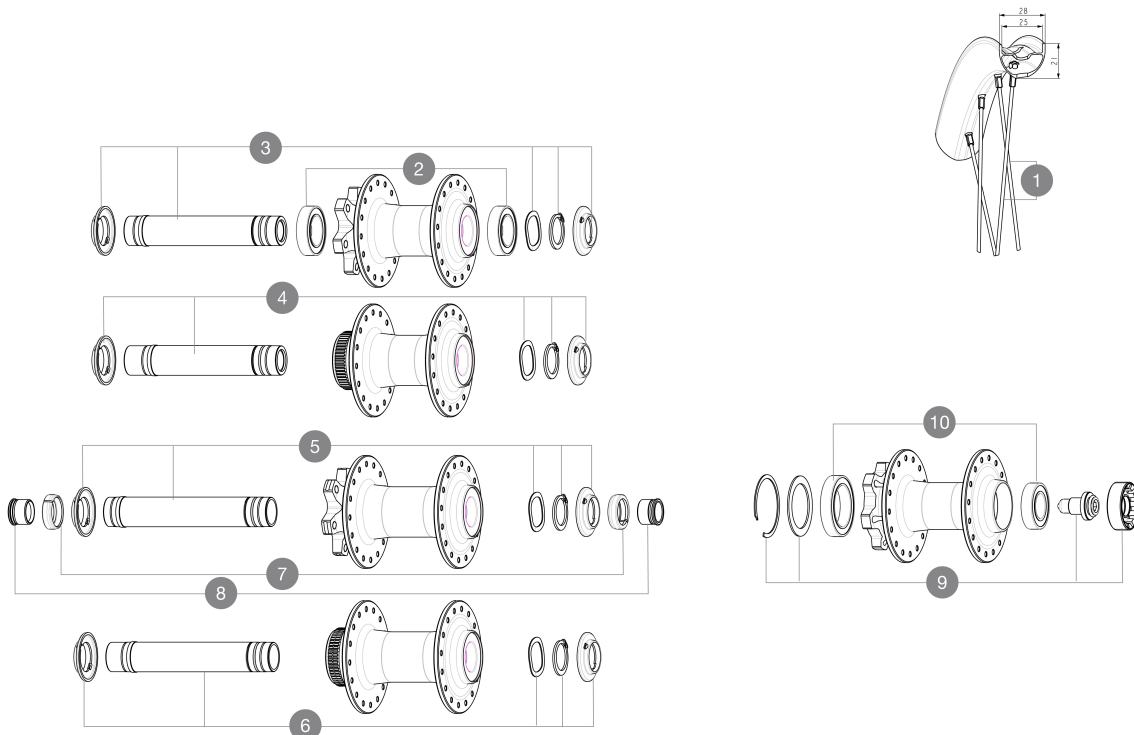


ASTM CATEGORY 2 : road and offroad with jumps less than 15cm  
 Front axle: convertible from 15mm thru axle to Quick Release with included adapters  
 Recommended tire sizes: 28 to 64 mm (1.1" to 2.5")  
 Boost : Torque Caps for Center Lock hub (V2374401)  
 For a longer longevity of the wheel, Mavic recommends that the total weight supported by the wheels doesn't exceed 180kg, E-bike included

## REFERENCES WHEELS



### SPOKES

1	V00062431	Kit 16 ft/rr Jbent bk rd spk 293 29"+np
---	-----------	---

### HUB SHELLS

2	V2500901	KIT BEARINGS 18x30x7 + WAVED WASHER + CLIP
3	V2375501	Kit QRM auto front axle 100x12/15mm D6T
4	V2374001	KIT 12x100mm FRONT AXLE DCL QRM AUTO ALLROAD > 2019
5	V2372401	KIT 110mm AXLE QRM AUTO MTB > 2019
6	V2375601	Kit 110mm axle QRM auto MTB from 2019 DCL
9	36709301	ASSEMBLY KIT FOR LEFTY SUPERMAX WHEELS
10	M40771	BEARING KIT FOR LEFTY 50 & 60 HUB

### ADAPTERS

7	V2372501	15mm MTB Axle Cap QRM Auto From 2019
8	V2680201	12mmFtRoadAxleAdaptersQRM
	V2680301	"Kit Ft Road Adapter 12 >> 9mm"
	99694101	ADAPTER Ft 15 to 9mm QR

**MAVIC** **E-SPEEDCITY 1 700****DELIVERED WITH**

User guide	
Rim tape	
Rear QR adapters (non-boost wheel)	
Rear QR adapters (non-boost wheel)	
User guide	
User guide	
Rim tape	

**COMPATIBILITY**

Freewheel: Shimano/Sram, convertible to Campagnolo ED11, N3W and XD-R with optional driver bodies	
Front axle: 12mm thru axle, easily convertible to quick release with optional adapters. Convertible to 15mm with complete axle replacement	
Rear axle: 12mm thru axle, convertible to Quick Release with optional adapters and axle replacement	
Freewheel body: convertible SRAM XD road (kit V2580101 sold separately)	
Freewheel body: convertible SRAM XD road (kit V2580101 sold separately)	
Freewheel body: convertible SHIMANO HG light road (kit V3850101 sold separately)	
Freewheel body: convertible SHIMANO HG light road (kit V3850101 sold separately)	
Freewheel body: convertible SHIMANO MS (kit V3990101 sold separately)	
Freewheel body: convertible SHIMANO MS (kit V3990101 sold separately)	
Front axle: 12mm thru axle, easily convertible to quick release with optional adapters. Convertible to 15mm with complete axle replacement	
Front axle: 12mm thru axle, easily convertible to quick release with optional adapters. Convertible to 15mm with complete axle replacement	
Freewheel body: convertible CAMPAGNOLO N3W (kit V4270101 sold separately)	
Freewheel body: convertible CAMPAGNOLO N3W (kit V4270101 sold separately)	
ID360 Shimano Micro Spline alloy freewheel body (V3990101)	
ID360 Sram XD freewheel body (V3740101)	
Rear axle: for fixing nuts only (included), M9x1 thread	
Front axle: convertible from 15mm thru axle to Quick Release with included adapters	
Rear axle: for fixing nuts only (included), M9x1 thread	