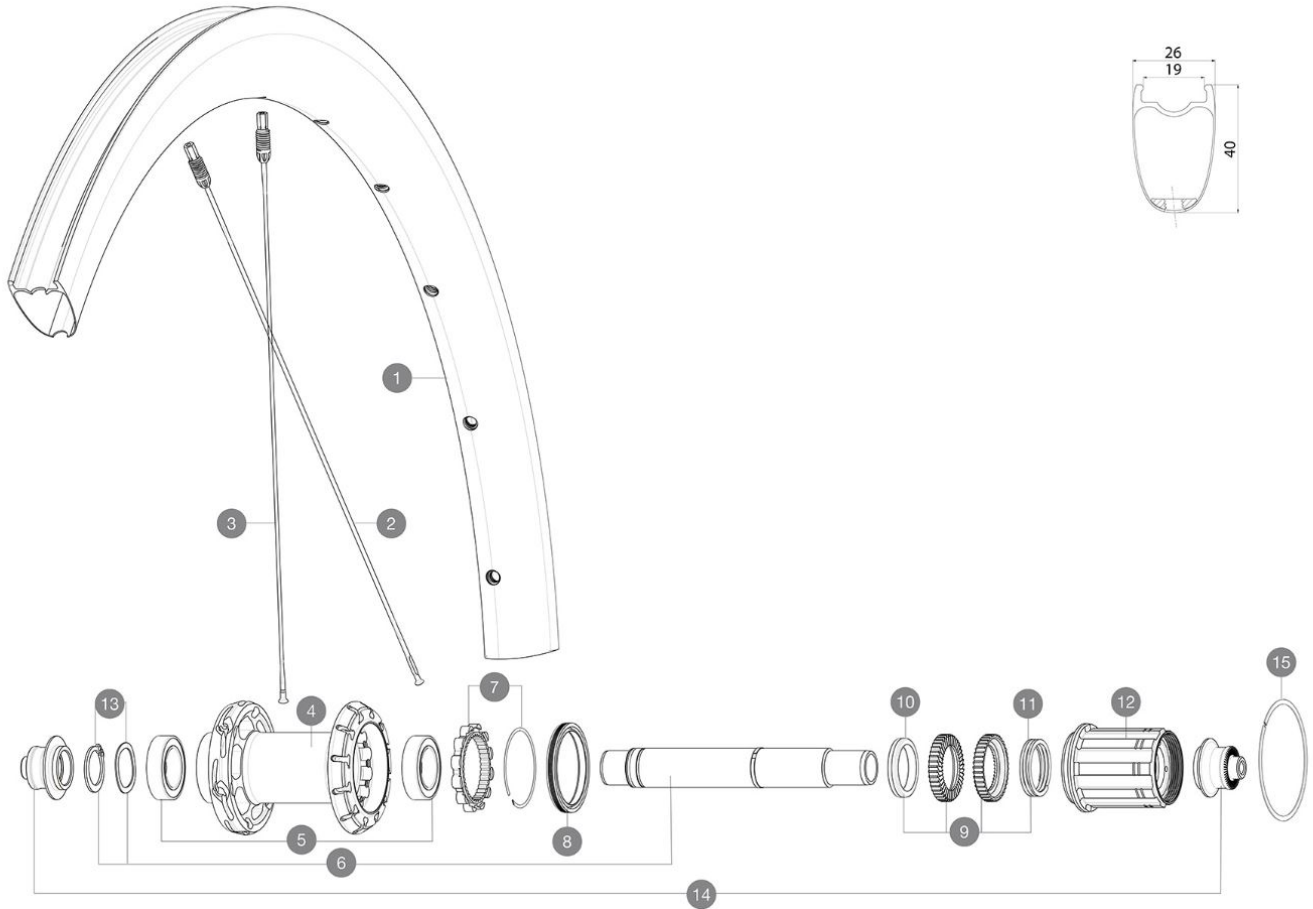


ASTM CATEGORY 1 : road only

## REFERENCES WHEELS



### RIMS



&NBSP;:

1	V00063109	Kit Rear rim Cosmic SLR40 Ltd
---	-----------	-------------------------------

### SPOKES

2	V3669401	Kit 12 DS Cosmic SLR40 aero ss spk266 M6
3	V3669301	Kit 12 NDS Cosmic SLR40 aero ss spk285M6

### HUB SHELLS

4	N/A	HUB BODY
5	V2560401	KIT 2 BEARINGS 17x28x7 + WAVED WASHER + CLIP
6	V2252801	KIT ID360 UB REAR AXLE W/CLIP/WAVED WASHER
7	V2252701	KIT ID360 INSERT SHAPED EAR LOBE > 2017
8	V00063631	Kit ID360 seal version 2 (larger)
9	V2251701	KIT ID360 2 RATCHETS + SPRING + GREASE
10	V2500501	KIT ID360 3 PADS NOISE REDUCING
11	V2251801	KIT 3 ID360 ROAD SPRINGS
12	V3430101	HG11 Freewheel Body ID360
13	V2560501	KIT ADJUST. SYSTEM QRM AUTO ID360 for 17x28x7 bearing
15	V2252201	KIT 2 REAR HUB RETENTION RINGS 48mm

### ADAPTERS

14	V2253101	KIT REAR AXLE ADAPTOR QUICK RELEASE ID360
----	----------	---

**MAVIC** **COSMIC SLR 40 LTD****DELIVERED WITH**

BR301 quick releases (V24 501 01 frt, V24 502 01 rear)	
Carbon brake pads (V24 603 01 Shimano/Sram, V24 604 01 Campagnolo)	
UST valve and accessories (129 838 01)	
User guide	

**COMPATIBILITY**

Freewheel: Shimano/Sram, convertible to Campagnolo ED11, N3W and XD-R with optional driver bodies	
---	--

**Specifications****RIMS**

- **Material** : 100% carbon fiber
  - **Height** : 40 mm
  - **Valve hole diameter** : 6.5 mm
  - **Tire** : UST Tubeless and tubetype
  - **Internal width** : 19 mm
  - **ETRTO size** : 622x19TC
- Fore Carbon tapeless tubeless technology  
UST Tubeless Ready

**SPOKES**

- **Material** : steel
  - **Shape** : straight pull, elliptical aero, double butted (patented)
  - **Nipples** : Fore integrated aluminum
  - **Count** : front 18, rear 24
  - **Lacing** : front radial, rear Isopulse
- Isopulse lacing design

**WHEEL HUB**

- **Front and rear bodies** : aluminum
  - **Axle material** : aluminum
- Instant Drive 360 freewheel technology  
QRM Auto bearing preload technology

**VERSIONS**

- **Freewheel** : Shimano/Sram

**WHEEL WEIGHTS**

750