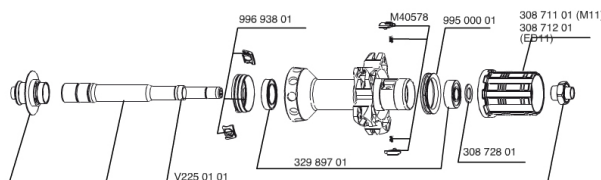
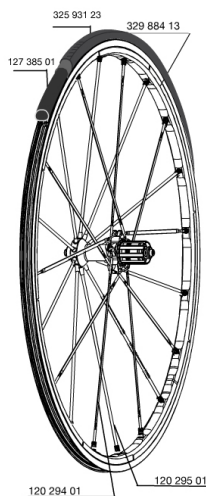


REFERENCES WHEELS

325669 R-SYS SLR 013 ED11 WTS

325668 R-SYS SLR 013 M11 WTS



RIMS



&NBSP;:

32988413 KIT REAR R-SYS SLR CLINCHER 2013 ISM 3D RIM

SPOKES

12029501 KIT 10 NDS R-SYS SLR CLINC BLACK SPOKE 284mm
12029401 KIT 10 DS R-SYS SLR/SLR CLINC BLK SPK 294,5mm
99693801 2 SILVER TRACOMP RINGS + CLIPS

HUB SHELLS

32989701 REAR HUB QRM SL BEARINGS 2013
30871101 FTS-L ROAD FREEWHEEL BODY HG11 8/9 compatible
99500001 FTSL/FTSX FREEHUB BODY SEAL
V2250101 KIT REAR AXLE R-SYS SLR
30872801 SET OF 3 INTERNAL SILVER SPACERS 9mm FTS-L
M40578 FTSL PAWLS KIT (ROAD WHEELS)
30871201 FTS-L ROAD FREEWHEEL BODY ED11 8/9 compatible

MAINTENANCE

12738501 Road Innertube Presta 48mm

TYRES

32593123 YksionProSSCPowerLink 23

MAVIC R-Sys SLR C

DELIVERED WITH

BR601 quick releases	
BR601 quick releases	
Wheelbags	
Wheelbags	
Computer magnet (front wheel)	
Computer magnet (front wheel)	
Multifonction adjustment wrench	
Multifonction adjustment wrench	
Tracomp ring tool	
Tracomp ring tool	
User guide	
User guide	

Specifications

RIMS

- **Material** : Maxtal
- **Material** : Maxtal
- **Color** : Exalith
- **Height** : front 22 mm, rear 25 mm asymmetrical
- **Joint** : SUP
- **Height** : front 22 mm, rear 25 mm asymmetrical
- **Joint** : SUP
- **Drilling** : Fore
- **Brake track** : Exalith 2
- **Drilling** : Fore
- **Weight reduction** : ISM 3D
- **Valve hole diameter** : 6.5 mm
- **Brake track** : Exalith 2
- **Tyre** : clincher or tubular
- **Weight reduction** : ISM 3D
- **Valve hole diameter** : 6.5 mm
- **Tyre** : clincher or tubular
- **ETRTO size** : 622x15C
- **ETRTO size** : 622x15C
- **Recommended tyre sizes** : 19 to 32 mm
- **Recommended tyre sizes** : 19 to 32 mm

SPOKES

- **Material** : carbon fiber (front and rear non drive side) and Zircal (rear drive side)

WHEEL HUB

- **Front and rear bodies** : aluminum
- **Front and rear bodies** : aluminum
- **Color** : black
- **Front and rear axle material** : aluminum QRM SL
- **Front and rear axle material** : aluminum FTS-L steel
- **Front and rear axle material** : aluminum QRM SL
- **Front and rear axle material** : aluminum FTS-L steel

WHEEL WEIGHTS

Wheel weight 740