

**MAVIC** *Ksyrium Pro Carbon SL T*

ASTM CATEGORY 2 : road and offroad with jumps less than 15cm

For a longer longevity of the wheel, Mavic recommends that the total weight supported by the wheels don't exceed 120kg, bike included

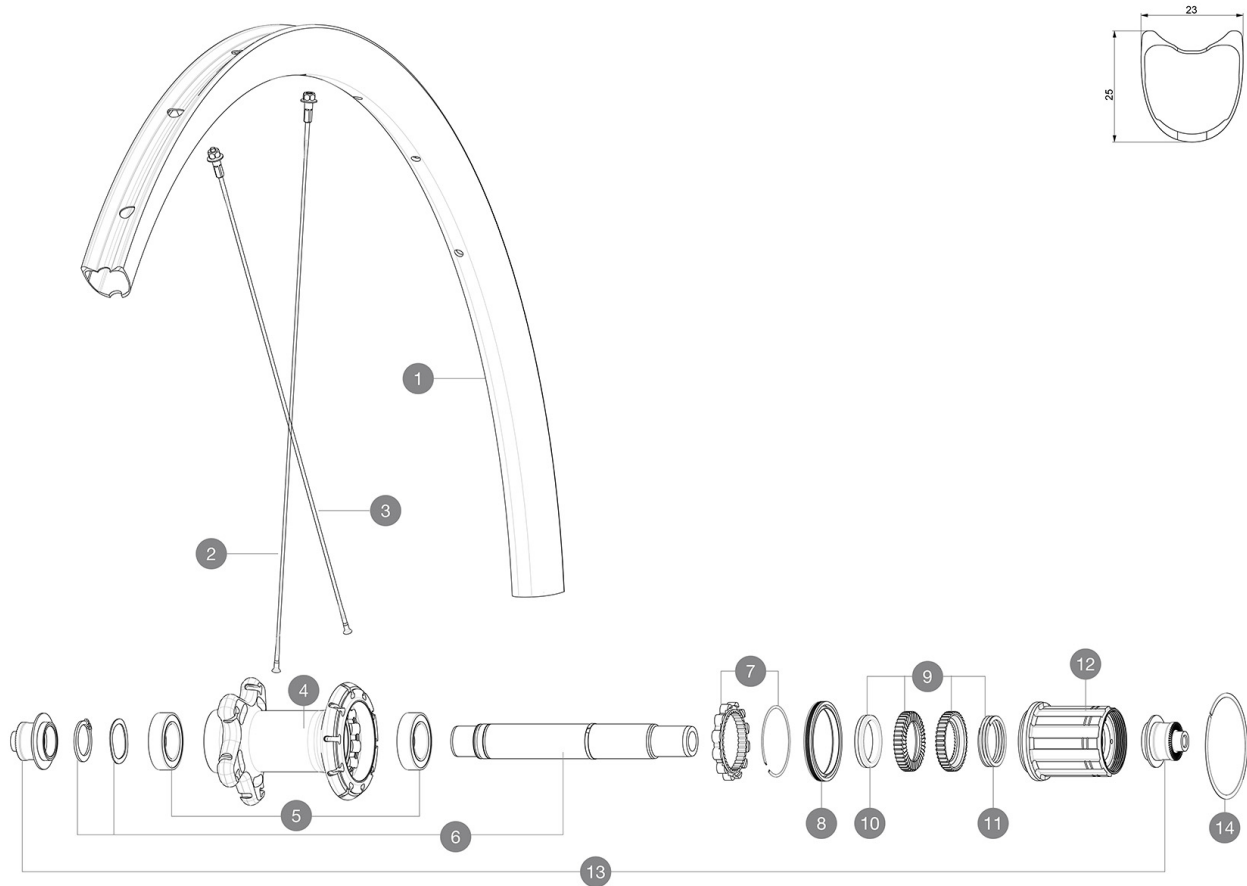
Recommended tyre sizes: 23 to 32 mm

Max. Pressure: see indication on wheel and tyre. If they differ, use the lower of the 2

Max. Pressure: 23mm 8.7 bars - 125 psi, 25/28mm 7.7 bars - 110 psi

**REFERENCES WHEELS**

R30461 Ksy Pro Carb SL T 19 Rr NT

**RIMS**

&NBSP;:

**1** V2738613 KIT REAR RIM KSYRIUM PRO CARBON SL T 19

**SPOKES**

**2** V3663701 KIT 12 FRT/NDS BUTTED AERO STAINLESS SPOKE 294 + alu nipple  
**2** V3667401 KIT 1 FRT 285/1 NDS 294 KSYRIUM PRO CARBON SL T 19 AERO STAM  
**3** V3667501 KIT 12 DS KPC SL T 19 aero STAINLESS SPOKE 275 + alu nipple

**HUB SHELLS**

**4** N/A HUB BODY  
**5** V2560401 KIT 2 BEARINGS 17x28x7 + WAVED WASHER + CLIP  
**6** V2252801 KIT ID360 UB REAR AXLE W/CLIP/WAVED WASHER  
**7** V2252701 KIT ID360 INSERT SHAPED EAR LOBE > 2017  
**8** V2251601 KIT ID360 SEAL + GREASE  
**9** V2251701 KIT ID360 2 RATCHETS + SPRING + GREASE  
**10** V2500501 KIT ID360 3 PADS NOISE REDUCING  
**11** V2251801 KIT 3 ID360 ROAD SPRINGS  
**12** V3430101 HG11 Freewheel Body ID360  
**14** V2252201 KIT 2 REAR HUB RETENTION RINGS 48mm

**ADAPTERS**

**13** V2253101 KIT REAR AXLE ADAPTOR QUICK RELEASE ID360

**MAVIC** **Ksyrium Pro Carbon SL T****DELIVERED WITH**

BR601 Titanium quick releases (323 485 01 frt, 323 486 01 rear)	
BR601 Titanium quick releases (323 485 01 frt, 323 486 01 rear)	
Carbon brake pads (V24 603 01 Shimano/Sram, V24 604 01 Campagnolo)	
Carbon brake pads (V24 603 01 Shimano/Sram, V24 604 01 Campagnolo)	
Multifunction adjustment wrench (325 423 01)	
Multifunction adjustment wrench (325 423 01)	
User guide	
User guide	

**COMPATIBILITY**

Freewheel: Shimano/Sram, convertible to Campagnolo and XD-R with optional driver bodies	
Freewheel: Shimano/Sram, convertible to Campagnolo and XD-R with optional driver bodies	
Front axle: Quick Release only	
Front axle: Quick Release only	
Rear axle: Quick Release only	
Rear axle: Quick Release only	

**Specifications****RIMS**

- **Material** : 3K carbon fibers
- **Material** : 3K carbon fibers
- **Height** : 25mm
- **Height** : 25mm
- **Drilling** : traditional
- **Drilling** : traditional
- **Brake track** : carbon with iTgMAX technology
- **Brake track** : carbon with iTgMAX technology
- **Valve hole diameter** : 6.5 mm
- **Valve hole diameter** : 6.5 mm
- **Tyre** : tubular
- **Tyre** : tubular
- **ETRTO size** : 28" tubular
- **ETRTO size** : 28" tubular

**SPOKES**

- **Material** : steel
- **Material** : steel
- **Shape** : straight pull, aero, double butted
- **Shape** : straight pull, aero, double butted
- **Nipples** : aluminum, ABS
- **Nipples** : aluminum, ABS
- **Count** : front 18, rear 24
- **Count** : front 18, rear 24
- **Lacing** : front radial, rear Isopulse
- **Lacing** : front radial, rear Isopulse

**WHEEL HUB**

- **Front and rear bodies** : aluminum
- **Front and rear bodies** : aluminum
- **Axle material** : aluminum
- **Axle material** : aluminum
- **Front bearings** : adjustable sealed cartridge bearings (QRM+), Rear bearings auto adjust sealed cartridge bearings (QRM Auto)
- **Front bearings** : adjustable sealed cartridge bearings (QRM+), Rear bearings auto adjust sealed cartridge bearings (QRM Auto)
- **Freewheel** : Instant Drive 360
- **Freewheel** : Instant Drive 360

**VERSIONS**

- **Color** : Black only

**WHEEL WEIGHTS**

675