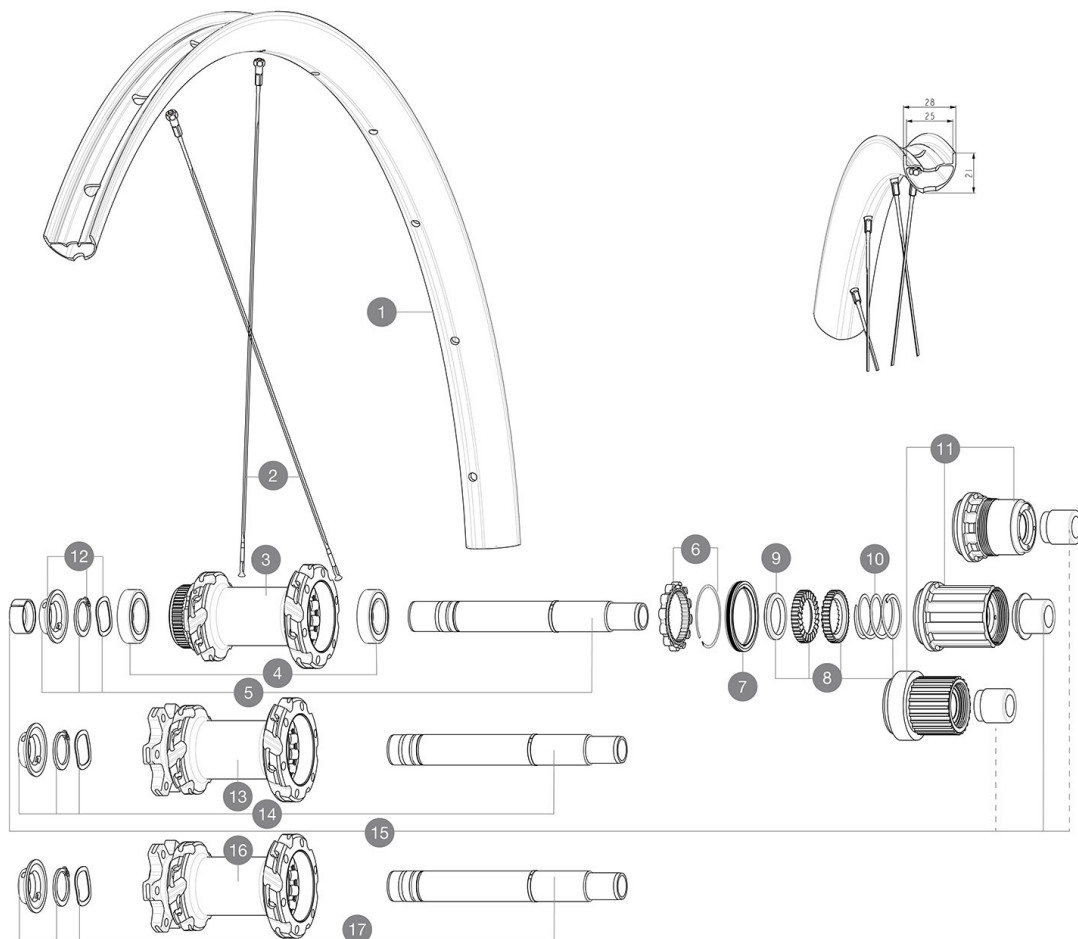


**ASTM CATEGORY 3 : CROSS COUNTRY**

Maximum tyre pressure: 4.1bar/59PSI with a 28mm tyre - 2.45bar/36PSI with a 64mm tyre  
 For a longer longevity of the wheel, Mavic recommends that the total weight supported by the wheels doesn't exceed 150kg, bike included  
 Non-Boost : 12x135 rear axle adapters (V2510901)  
 Recommended tire sizes: 28 to 64 mm (1.1" to 2.5")  
 Boost : Torque Caps for Center Lock hub (V2374401)

**REFERENCES WHEELS**

|        |                          |        |                         |
|--------|--------------------------|--------|-------------------------|
| R42081 | CROSSMAX INT 27,5 BST HG | R42111 | CROSSMAX CL 27,5 BST MS |
| R42091 | CROSSMAX INT 27,5 BST XD | R42261 | CROSSMAX INT 27,5 HG    |



**RIMS**



&NBSP;:

|   |           |                                      |
|---|-----------|--------------------------------------|
| 1 | V00010031 | Kit Front/Rear rim Crossmax 23 27,5" |
|---|-----------|--------------------------------------|

**SPOKES**

|   |           |  |
|---|-----------|--|
| 2 | V00009631 | Kit12Ft/Rrbtdspk277 MTB27,5+black nipple |
|---|-----------|--|

**HUB SHELLS**

|    |           |  |
|----|-----------|--|
| 3  | N/A       | HUB BODY   |
| 4  | M40076    | HUB BEARINGS 17x30x7 6903 x 2                              |
| 5  | V2375701  | Kit ID360 148 DCL axle with circlip                        |
| 6  | V2252701  | KIT ID360 INSERT SHAPED EAR LOBE > 2017                    |
| 7  | V00063631 | Kit ID360 seal version 2 (larger)                          |
| 8  | V2375201  | KIT ID360 24 TEETH 2 RATCHET + MTB SPRING + PAD (specific) |
| 9  | V2375401  | KIT ID360 MTB 24T 3 NOISE REDUCING PADS                    |
| 10 | V2372901  | KIT 3 ID360 MTB SPRINGS                                    |
| 11 | V3990101  | MicroSpline MTB Freewheel Body ID360                       |
| 11 | V3780101  | HG9 Alloy MTB Freewheel Body ID360                         |
| 11 | V3740101  | XD MTB Freewheel Body ID360                                |
| 12 | V2373001  | KIT ADJUST. SYSTEM QRM AUTO ID360 for 17x30x7 bearing      |
| 13 | N/A       | HUB BODY   |
| 14 | V2372201  | KIT ID360 148 D6T AXLE WITH CLIP                           |
| 16 | N/A       | HUB BODY   |

|    |          |                                      |
|----|----------|--------------------------------------|
| 17 | V2372101 | KIT ID360 135/142 D6T AXLE WITH CLIP |
|----|----------|--------------------------------------|

**OPTIONS**

|          |   |
|----------|---|
| V2372801 | KIT ID360 2x40 TEETH RATCHETS + MTB SPRING + GREASE + PAD |
|----------|---|

**ADAPTERS**

|    |          |                              |
|----|----------|------------------------------|
| 15 | V2510701 | ID360V2RrAxleAdapt12x142/148 |
|    | V2510801 | ID360 V2 RrAxleAdapt9x135    |

# MAVIC CROSSMAX 27.5

## DELIVERED WITH

|  |  |
|--|--|
| User guide   |  |
| UST valve and accessories<br>(129 838 01)              |  |
| UST valve and accessories<br>(129 838 01)              |  |
| Pre-installed tubeless rim tape                        |  |
| Pre-installed tubeless rim tape                        |  |
| User guide   |  |
| Pre-installed tubeless rim tape                        |  |
| UST valve and accessories<br>(129 838 01)              |  |
| 2 replacement spokes with each wheel                   |  |
| 12 to 9mm rear adapter for quick release<br>(V2510801) |  |
| 2 replacement spokes with each wheel                   |  |
| 2 replacement spokes with each wheel                   |  |

## COMPATIBILITY

|   |  |
|---|--|
| Front axle: convertible from 15mm thru axle to Quick Release with adapters (delivered with non-boost wheel)   |  |
| Rear axle: 12mm thru axle, convertible to Quick Release with adapters (delivered with non-boost wheel)  |  |
| Freewheel body: convertible SHIMANO HG MTB steel (kit V3790101 sold separately)   |  |
| Freewheel body: convertible SHIMANO HG MTB steel (kit V3790101 sold separately)   |  |
| Front axle adapters: 15x100 convertible to 9x100 (kit 99694101 sold separately)   |  |
| Front axle adapters: 15x100 convertible to 9x100 (kit 99694101 sold separately)   |  |
| Front axle adapters: 15x110 convertible to 9x110 (kits 99694101 + V2372501 sold separately)   |  |
| Front axle adapters: 15x110 convertible to 9x110 (kits 99694101 + V2372501 sold separately)   |  |
| Front axle: for fixing nuts only (included), M9x1 thread  |  |
| ID360 Sram XD freewheel body (V3740101)   |  |
| Rear axle: for fixing nuts only (included), M9x1 thread   |  |
| Rear axle adapters: 12x148 convertible to 9x141 (kit V2510801 sold separately)  |  |
| Rear axle adapters: 12x148 convertible to 9x141 (kit V2510801 sold separately)  |  |
| Instant Drive 360 freewheel technology<br>The new Instant Drive 360 freewheel system is super light and fast to engage with only 9Å°. A large contactless rubber seal provides low friction, while a wide array of end caps makes it super versatile. |  |
| Front axle: for fixing nuts only (included), M9x1 thread  |  |
| Rear axle: for fixing nuts only (included), M9x1 thread   |  |
| ID360 Sram XD freewheel body (V3740101)   |  |