

**MAVIC E-SPEEDCITY 1 650B**

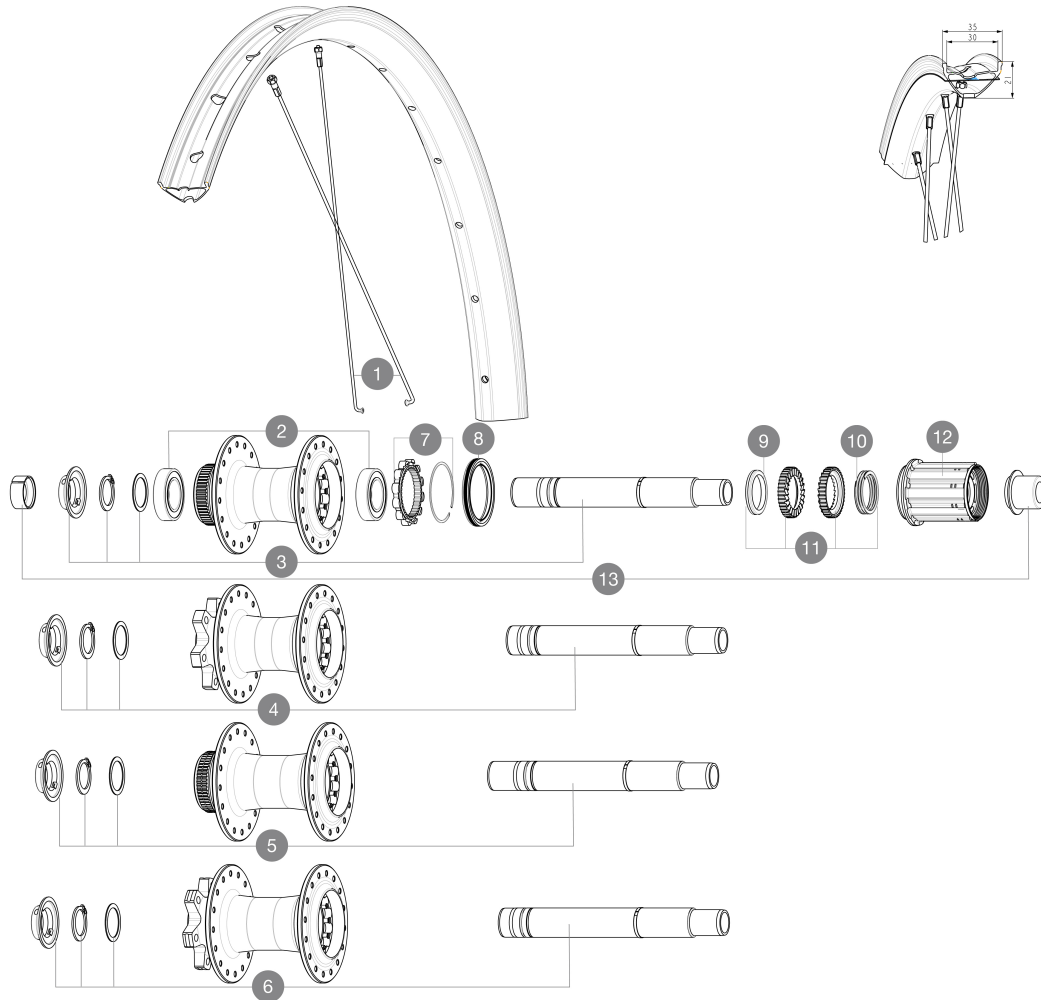
ASTM CATEGORY 2 : road and offroad with jumps less than 15cm

Tamaño máximo del neumático: anchura 52 mm - presión máx. 2,35 bares/34 psi

Recommended tire sizes: 50mm to 76mm (2.0" to 3.0")

Tamaño máximo del neumático: anchura 125 mm - presión máx. 1,25 Bar/18 PSI

For a longer longevity of the wheel, Mavic recommends that the total weight supported by the wheels doesn't exceed 180kg, E-bike included

**RUEDAS REFERENCIAS****SPOKES**

<b>1</b>	V00062531	Kit 16ft/rr Jbent bk rd spk275 27,5"+np
----------	-----------	---

**HUB SHELLS**

<b>2</b>	M40076	HUB BEARINGS 17x30x7 6903 x 2
<b>3</b>	V2373401	KIT ID360 135/142 DCL L1 AXLE WITH CLIP
<b>4</b>	V2372101	KIT ID360 135/142 D6T AXLE WITH CLIP
<b>5</b>	V2375701	Kit ID360 148 DCL axle with circlip
<b>6</b>	V2372201	KIT ID360 148 D6T AXLE WITH CLIP
<b>7</b>	V2252701	KIT ID360 INSERT SHAPED EAR LOBE > 2017
<b>8</b>	V00063631	Kit ID360 seal version 2 (larger)
<b>9</b>	V2375401	KIT ID360 MTB 24T 3 NOISE REDUCING PADS
<b>10</b>	V2372901	KIT 3 ID360 MTB SPRINGS
<b>11</b>	V2375201	KIT ID360 24 TEETH 2 RATCHET + MTB SPRING + PAD (specific)
<b>12</b>	V3430101	HG11 Freewheel Body ID360

**OPTIONS**

V2373001	KIT ADJUST. SYSTEM QRM AUTO ID360 for 17x30x7 bearing
----------	---

**ADAPTERS**

<b>13</b>	V2510701	ID360 EVO REAR AXLE ADAPTERS 12x142mm DCL & D6T
	V2510901	ID360 EVO REAR AXLE ADAPTERS 12x135mm DCL & D6T
	V2510801	ID360 EVO REAR AXLE ADAPTERS 9x135mm DCL & D6T

# MAVIC E-SPEEDCITY 1 650B

 2023  
 REAR

## ENTREGADO CON

User guide	
Fondo de llanta Tubeless preinstalado	
Arandela de cassette M9 no montada en la rueda trasera	
Arandela de cassette M9 no montada en la rueda trasera	
User guide	
User guide	
Fondo de llanta Tubeless preinstalado	

## COMPATIBILITY

Freewheel: Shimano/Sram, convertible to Campagnolo ED11, N3W and XD-R with optional driver bodies	
Front axle: 12mm thru axle, easily convertible to quick release with optional adapters. Convertible to 15mm with complete axle replacement	
Cuerpo rueda libre: convertible SRAM XD carretera (kit V2580101 vendido por separado)	
Cuerpo rueda libre: convertible SRAM XD carretera (kit V2580101 vendido por separado)	
Rear axle: 12mm thru axle, convertible to Quick Release with optional adapters and axle replacement	
Cuerpo rueda libre: convertible SHIMANO HG ligera carretera (kit V3850101 vendido por separado)	
Cuerpo rueda libre: convertible SHIMANO HG ligera carretera (kit V3850101 vendido por separado)	
Cuerpo rueda libre: convertible SHIMANO MS (kit V3990101 vendido por separado)	
Cuerpo rueda libre: convertible SHIMANO MS (kit V3990101 vendido por separado)	
Front axle: 12mm thru axle, easily convertible to quick release with optional adapters. Convertible to 15mm with complete axle replacement	
Front axle: 12mm thru axle, easily convertible to quick release with optional adapters. Convertible to 15mm with complete axle replacement	
Cuerpo rueda libre: convertible CAMPAGNOLO N3W (kit V4270101 vendido por separado)	
Cuerpo rueda libre: convertible CAMPAGNOLO N3W (kit V4270101 vendido por separado)	
ID360 Shimano Micro Spline alloy freewheel body (V3990101)	
NÁ°cleo de rueda libre Sram XD IDÁ 360 (V3740101)	
Eje trasero: solo para tuercas de fijaci³n (incluidas), rosca M9x1	
ID360 Shimano Micro Spline alloy freewheel body (V3990101)	
Rear axle: 12mm thru axle, convertible to Quick Release with adapters (delivered with non-boost wheel)	