

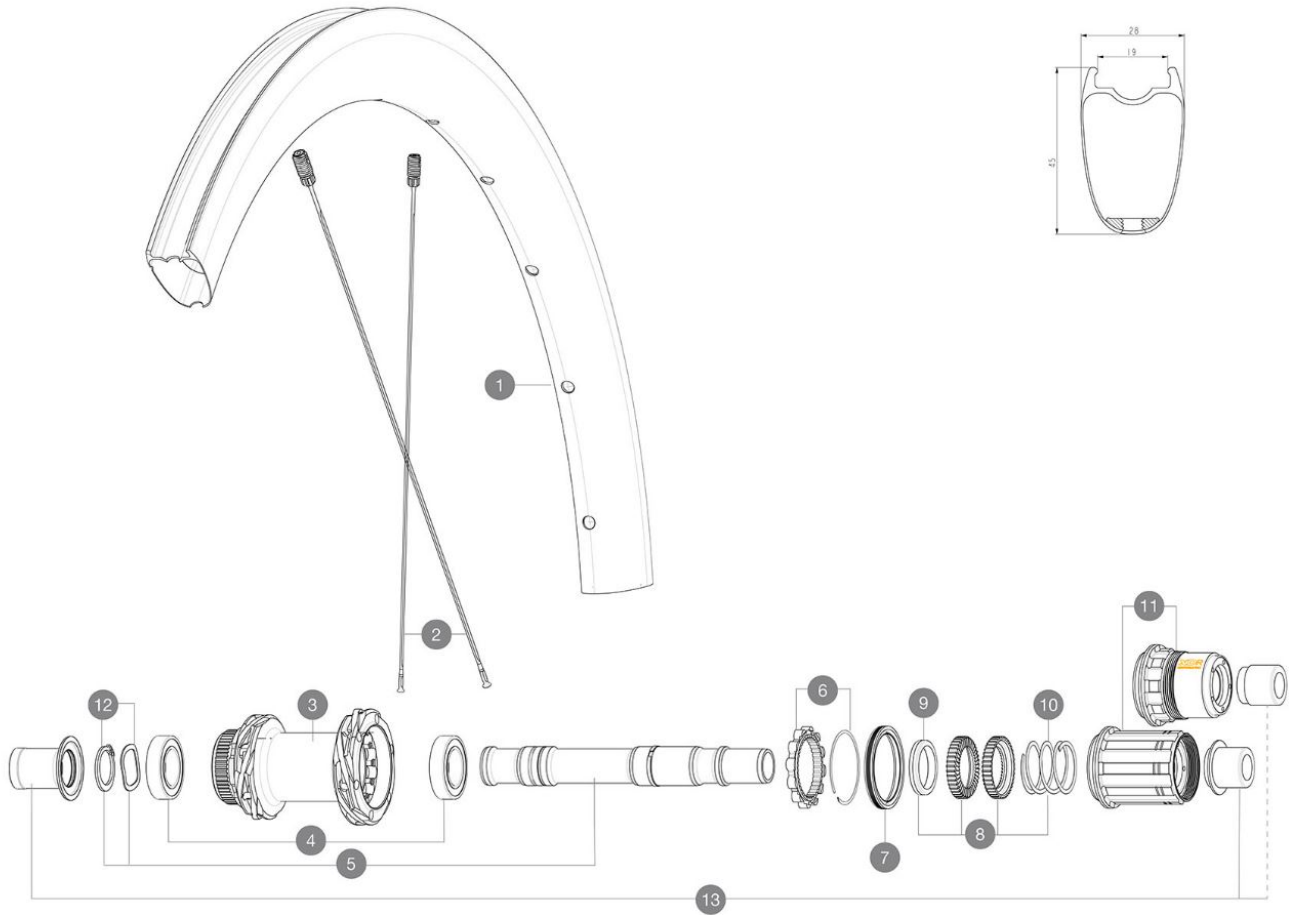
**MAVIC** **COSMIC SLR 45 LTD****RUEDAS REFERENCIAS**

ASTM CATEGORY 2 : road and offroad with jumps less than 15cm

For a longer longevity of the wheel, Mavic recommends that the total weight supported by the wheels doesn't exceed 120kg, bike included

Recommended tire sizes: 25 to 32 mm

Max. Pressure: see indication on wheel and tire. If they differ, use the lowest of the 2

**RIMS**

&NBSP;:

**1** V00062831 Kit Front/Rear rim Cosmic SLR45 Ltd

**SPOKES**

**2** V4163701 Kit 12 Front/Rear Cosmic SLR 45 Disc aero stainless spoke 27

**HUB SHELLS**

<b>3</b>	N/A	CUERPO DE BUJE
<b>3</b>	N/A	CUERPO DE BUJE
<b>4</b>	M40076	HUB BEARINGS 17x30x7 6903 x 2
<b>5</b>	V00046431	KIT AXE ID360 142LIGHT CL+CIR
<b>6</b>	V2252701	KIT ID360 INSERT SHAPED EAR LOBE > 2017
<b>7</b>	V00063631	Kit ID360 seal version 2 (larger)
<b>8</b>	V2251701	ID360 2 RATCHETS + SPRING + GREASE
<b>9</b>	V2500501	Kit 3 ID360 pad for noise reduction
<b>10</b>	V2251801	KIT 3 ID360 ROAD SPRINGS
<b>11</b>	V3430101	HG11 Freewheel Body ID360
<b>11</b>	V2580101	FREEHUB BODY XD Road ID360
<b>12</b>	V2373001	KIT ADJUST. SYSTEM QRM AUTO ID360 for 17x30x7 bearing

**OPTIONS**

V2373401 KIT ID360 135/142 DCL L1 AXLE WITH CLIP

**ADAPTERS**

<b>13</b>	V3811001	KIT ROAD ID360 RR CL ENDCAP (12MM)
	V2510801	ID360 EVO REAR AXLE ADAPTERS 9x135mm DCL & D6T
	V2510901	ID360 EVO REAR AXLE ADAPTERS 12x135mm DCL & D6T

# MAVIC COSMIC SLR 45 LTD

2023  
REAR

## ENTREGADO CON

UST valve and accessories (129 838 01)	
User guide	

## COMPATIBILITY

Freewheel: Shimano/Sram, convertible to Campagnolo ED11, N3W and XD-R with optional driver bodies	
Rear axle: 12mm thru axle, convertible to Quick Release with optional adapters and axle replacement	
Front axle: 12x100 thru axle, easily convertible to quick release with optional adapters. Not compatible with 15mm through axles	

## Specifications

### LLANTAS

- **Material** : 100% carbon fiber with UD<sup>2</sup> external layer
  - **Material** : 100% carbon fiber
  - **Height** : 45 mm
- Disc brake specific profile
- **Tire** : UST Tubeless and tubetype
  - **Internal width** : 19 mm
  - **ETRTO size** : 622x19TC
- Fore Carbon tapeless tubeless technology  
UST tubeless technology

### RADIOS

- **Material** : steel
- **Shape** : straight pull, elliptical aero, double butted (patented)
- **Nipples** : Fore integrated aluminum
- **Count** : 24 front and rear
- **Lacing** : front and rear crossed 2, contactless

### BUJE DE LA RUEDA

- **Front and rear bodies** : aluminum
  - **Axle material** : aluminum
  - **Front** : Quick release and 12x100 through axle compatible
  - **Rear** : Quick Release, 12x142 and 12x135 compatible
- Infinity hubs  
El buje está disponible solo para rotores de freno  
Center Lock  
Instant Drive 360 freewheel technology  
QRM Auto bearing preload technology

### VERSIONS

- **Disc standard** : Center Lock<sup>®</sup> only
- **Freewheel** : Shimano/Sram

### PESOS DE RUEDAS

785