

MAVIC COSMIC SLR 32 DISC

2021
REAR

ASTM CATEGORY 2 : road and offroad with jumps less than 15cm

For a longer longevity of the wheel, Mavic recommends that the total weight supported by the wheels doesn't exceed 120kg, bike included

Recommended tyre sizes: 25 to 32 mm

Núcleo de rueda libre de acero Shimano IDÁ 360 (V3790101)

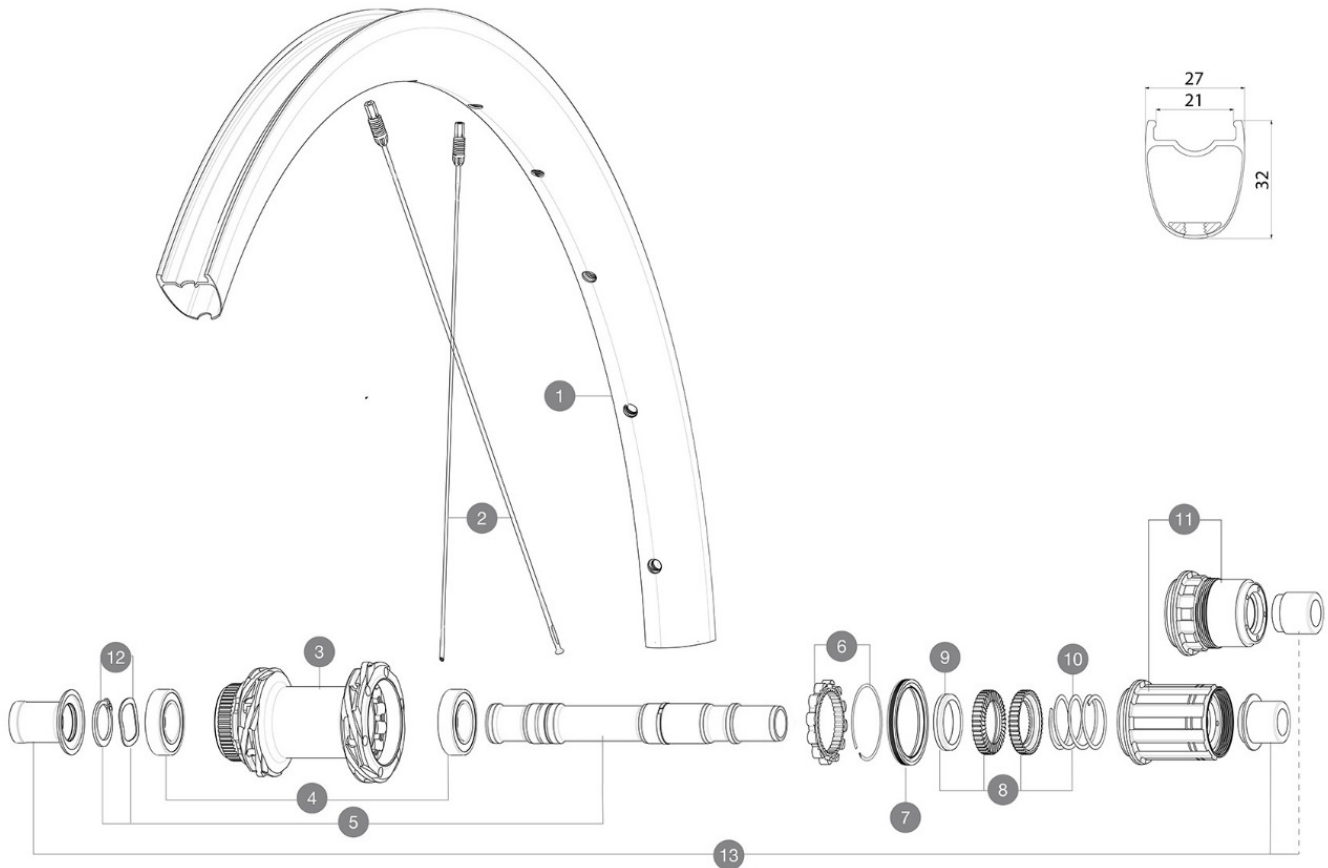
Max. Pressure: see indication on wheel and tyre. If they differ, use the lowest of the 2

Maximum tyre pressure: 6.1bar/88PSI with a 25mm tyre - 3.5bar/51PSI with a 64mm tyre

Núcleo de rueda libre ID360 N3W (LV4270100)

RUEDAS REFERENCIAS

R39781 COS SLR32 CL 700 12X142 M11 R39791 COS SLR32 CL 700 12X142 XDR



RIMS



&NBSP;:

1 V4094615 Kit Front/Rear rim Cosmic SLR 32 Disc

SPOKES

2 V4164801 Kit 12 CosmicSLR32 Disc aero sspk M6 291

HUB SHELLS

| | | |
|----|-----------|---|
| 3 | N/A | CUERPO DE BUJE |
| 3 | N/A | CUERPO DE BUJE |
| 4 | M40076 | HUB BEARINGS 17x30x7 6903 x 2 |
| 5 | V00046431 | KIT AXE ID360 142LIGHT CL+CIR |
| 6 | V2252701 | KIT ID360 INSERT SHAPED EAR LOBE > 2017 |
| 7 | V00063631 | Kit ID360 seal version 2 (larger) |
| 8 | V2251701 | ID360 2 RATCHETS + SPRING + GREASE |
| 9 | V2500501 | Kit 3 ID360 pad for noise reduction |
| 10 | V2251801 | KIT 3 ID360 ROAD SPRINGS |
| 11 | V2580101 | FREEHUB BODY XD Road ID360 |
| 11 | V3430101 | HG11 Freewheel Body ID360 |
| 12 | V2373001 | KIT ADJUST. SYSTEM QRM AUTO ID360 for 17x30x7 bearing |

OPTIONS

V2373401 KIT ID360 135/142 DCL L1 AXLE WITH CLIP

ADAPTERS

| | | |
|----|----------|---|
| 13 | V3811001 | KIT ROAD ID360 RR CL ENDCAP (12MM) |
| | V2510901 | ID360 EVO REAR AXLE ADAPTERS 12x135mm DCL & D6T |
| | V2510801 | ID360 EVO REAR AXLE ADAPTERS 9x135mm DCL & D6T |

ENTREGADO CON

| | |
|--|--|
| User guide | |
| UST valve and accessories (129 838 01) | |
| UST valve and accessories (129 838 01) | |
| UST valve and accessories (129 838 01) | |
| UST valve and accessories (129 838 01) | |
| Llave de ajuste Fore | |
| User guide | |
| User guide | |
| User guide | |
| User guide | |
| UST valve and accessories (129 838 01) | |
| ID360 Campagnolo freewheel body (LLV3440100) | |

COMPATIBILITY

| | |
|--|--|
| Freewheel: Shimano/Sram, convertible to Campagnolo and XD-R with optional driver bodies | |
| Freewheel: Shimano/Sram, convertible to Campagnolo and XD-R with optional driver bodies | |
| Freewheel: Shimano/Sram, convertible to Campagnolo and XD-R with optional driver bodies | |
| Eje delantero: eje pasante de 12Å mm, fÅcilmente convertible a cierre rÅpido con los adaptadores opcionales. No es compatible con ejes pasantes de 1 | |
| Eje delantero: eje pasante 12x100, fÅcilmente convertible a cierre rÅpido con los adaptadores opcionales. No es compatible con ejes pasantes de 15Å | |
| Eje delantero: eje pasante 12x100, fÅcilmente convertible a cierre rÅpido con los adaptadores opcionales. No es compatible con ejes pasantes de 15Å | |
| Rear axle: 12mm thru axle, convertible to Quick Release with optional adapters | |
| Cuerpo rueda libre: convertible SRAM XD carretera (kit V2580101 vendido por separado) | |
| Rear axle: 12mm thru axle, convertible to Quick Release with optional adapters | |
| Cuerpo rueda libre: convertible SRAM XD carretera (kit V2580101 vendido por separado) | |
| Rear axle: 12mm thru axle, convertible to Quick Release with optional adapters | |
| Cuerpo rueda libre: convertible SHIMANO HG ligera carretera (kit V3850101 vendido por separado) | |
| Cuerpo rueda libre: convertible SHIMANO HG ligera carretera (kit V3850101 vendido por separado) | |
| Cuerpo rueda libre: convertible SHIMANO MS (kit V3990101 vendido por separado) | |
| Cuerpo rueda libre: convertible SHIMANO MS (kit V3990101 vendido por separado) | |
| Cuerpo rueda libre: convertible CAMPAGNOLO ED (kit V3440101 vendido por separado) | |
| Cuerpo rueda libre: convertible CAMPAGNOLO ED (kit V3440101 vendido por separado) | |
| Cuerpo rueda libre: convertible CAMPAGNOLO N3W | |