

MAVIC E-DEEMAX S 29

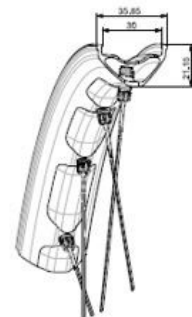
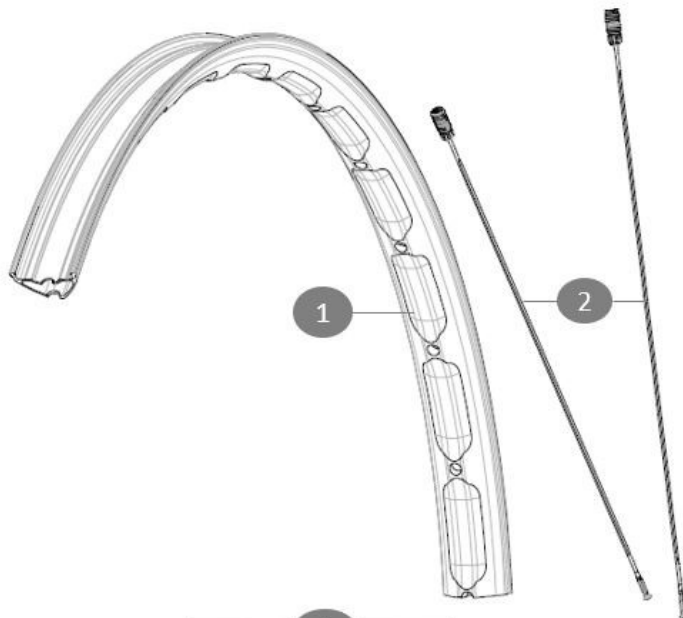
ASTM CATEGORY 5 : GRAVITY RIDING FOCUSED ON THE DESCENT

Minimum tyre size: width 52mm - pressure max. 2.95Bar/43PSI

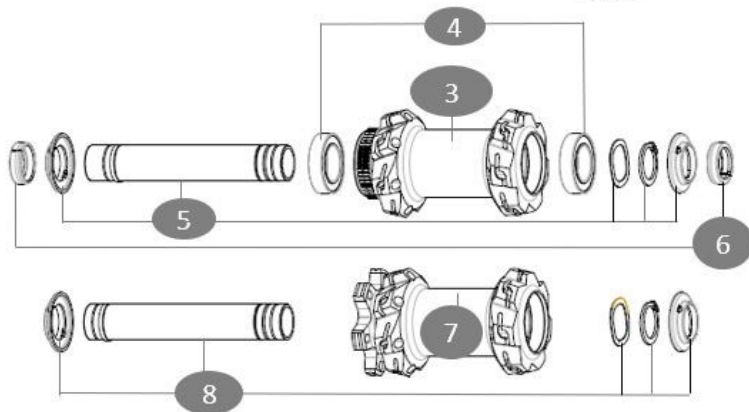
Non-Boost : 12 to 9mm rear adapter for quick release (V2510801)

For a longer longevity of the wheel, Mavic recommends that the total weight supported by the wheels doesn't exceed 180kg, E-bike included

REFERENCES WHEELS



Jante avant e-Deemax S WB



Specifications	Maxi target
Frontal run out	0,5mm
Lateral run out	0,5mm
Centrerig	1,0mm (2x0,5)
Tension daN	81 > 107
Disc side	

RIMS



&NBSP;:

1 V00100431 Kit Front/Rear rim eDeemax S30 24 29"

SPOKES

2 V00100831 Kit 14 steel spokes 305mm eDeemax S30 24 29"

HUB SHELLS

3 N/A HUB BODY
 4 V2500901 KIT BEARINGS 18x30x7 + WAVED WASHER + CLIP
 5 V2375601 Kit 110mm axle QRM auto MTB from 2019 DCL
 7 N/A HUB BODY
 8 V2372401 KIT 110mm AXLE QRM AUTO MTB > 2019

ADAPTERS

6 V2372501 15mm MTB Axle Cap QRM Auto From 2019

MAVIC E-DEEMAX S 29

DELIVERED WITH

User guide	
UST valve and accessories (129 838 01)	
Multifunction adjustment wrench (delivered with rear wheel) (325 423 01)	
User guide	
UST valve and accessories (129 838 01)	
2 replacement spokes with each wheel	
Multifunction adjustment wrench (delivered with rear wheel) (325 423 01)	
2 replacement spokes with each wheel	

COMPATIBILITY

Freewheel body: convertible SHIMANO HG MTB aluminium (kit V3780101 sold separately)	
Freewheel body: convertible SHIMANO HG MTB aluminium (kit V3780101 sold separately)	
Freewheel body: convertible SHIMANO HG MTB steel (kit V3790101 sold separately)	
Freewheel body: convertible SHIMANO HG MTB steel (kit V3790101 sold separately)	
Boost 20 to 15mm front adapter ([12982801])	
Front axle: for fixing nuts only (included), M9x1 thread	
Rear axle adapters: 12x148 convertible to 9x141 (kit V2510801 sold separately)	
Rear axle adapters: 12x148 convertible to 9x141 (kit V2510801 sold separately)	
Front axle: convertible from 15mm thru axle to Quick Release with adapters (delivered with non-boost wheel)	
Front axle: for fixing nuts only (included), M9x1 thread	

Specifications

RIMS

- **Material** : Mxxtal
- **Material** : Mxxtal
- **Height** : 22 mm
- **Height** : 22 mm
- **Joint** : SUP welding technology
- **Joint** : SUP welding technology
- **Internal width** : 30 mm
- **Internal width** : 30 mm
- **Drilling** : Fore tapeless tubeless technology (front/rear 28 holes)
- **Drilling** : Fore tapeless tubeless technology (front/rear 28 holes)
- Disc brake specific profile
- Disc brake specific profile
- Asymmetrical rim design
- Asymmetrical rim design
- **ETRTO size 29"** : 622x30TC
- **ETRTO size 29"** : 622x30TC
- **Tire** : UST Tubeless and tubetype
- **Tire** : UST Tubeless and tubetype

SPOKES

- **Material** : steel
- **Material** : steel
- **Shape** : straight pull, round
- **Shape** : straight pull, round
- **Lacing** : front and rear crossed 3
- **Lacing** : front and rear crossed 3
- **Front axle** : convertible from 15mm thru axle to Quick Release with adapters (delivered with non-boost wheel)
- **Boost** : Torque Caps ([V2650401])
12mm front hub cap ([V2680501])

WHEEL HUB

- **Body** : aluminum
- **Body** : aluminum
- **Body design** : INFINITY
- **Body design** : INFINITY
- **Disc standard** : 6 Bolts or Center Lock®
- **Disc standard** : 6 Bolts or Center Lock®
- **Axle material** : aluminum
- **Axle material** : aluminum
- **Rear body** : aluminum
- **Rear body** : aluminum
- **Axles** : Front 15x110 (Boost) or 15x100 ; Rear 12x148 (Boost) or 12x142
- **Axles** : Front 15x110 (Boost) or 15x100 ; Rear 12x148 (Boost) or 12x142
- **Rear** : Quick Release, 12x142 and 12x135 compatible
- **Rear** : Quick Release, 12x142 and 12x135 compatible
- **Freewheel** : FTS-L steel
- **Freewheel** : FTS-L steel

WHEEL WEIGHTS

912