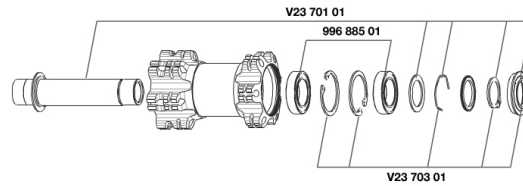


## REFERENCES WHEELS

325520 CROSSRIDE D013 15mm FRT



### RIMS



&NBSP;;

35124015 "KIT FRONT/REAR CROSSRIDE DISC 26"" 2013 RIM"

### SPOKES

99687501 KIT 12 CROSSRIDE DISC STEEL BLK SPOKES 263mm

### HUB SHELLS

V2371101 KIT FRONT QRM AXLE 100mm/BOOST 110mm

99688501 BEARING KIT 9/12/15 D6T HUB 20x32x7 6804

V2370301 KIT FRONT AUTO ADJUSTING PLAY 15mm AXLE

**MAVIC** *Crossride***DELIVERED WITH**

Rim tape	
Rim tape	
Rear 12x142mm adapters	
Rear 12x142mm adapters	
Valve reducer	
Valve reducer	
User guide	
User guide	

**Specifications****RIMS**

- **Material** : 6106 Aluminum
  - **Material** : 6106 Aluminum
  - **Color** : black anodized
  - **Joint** : pinned
  - **Drilling** : traditional
  - **Joint** : pinned
  - **Drilling** : traditional
- Disc brake specific profile
- **Eyelet** : H2 technology
- Disc brake specific profile
- **Valve hole diameter** : 8,5 mm with pop off reducer
  - **Tyre** : tubetype
  - **Internal width** : 19 mm
  - **Valve hole diameter** : 8,5 mm with pop off reducer
  - **ETRTO size** : 559x19C
  - **Tyre** : tubetype
  - **Internal width** : 19 mm
  - **ETRTO size 650b/27.5"** : 584x19c
  - **ETRTO size 29"** : 622x19C
  - **ETRTO size** : 559x19C
  - **Recommended tyre sizes** : 1.5 to 2.3
  - **Recommended tyre sizes** : 1.5 to 2.3

**SPOKES**

- **Material** : steel
- **Material** : steel
- **Shape** : straight pull, bladed
- **Shape** : straight pull, bladed
- **Color** : black
- **Nipples** : brass, ABS
- **Count** : 24 front and rear
- **Nipples** : brass, self lock concept
- **Count** : 24 front and rear
- **Lacing** : front and rear crossed 2
- **Lacing** : front and rear crossed 2

**WHEEL HUB**

- **Front and rear bodies** : aluminum
- **Front and rear bodies** : aluminum
- **Color** : black
- **Front and rear axle material** : aluminum QRM
- **Front and rear axle material** : aluminum TS-2 alloy QRM
- **Front and rear axle material** : aluminum TS-2 alloy QRM

**WHEEL WEIGHTS**

- Wheel weight
- Weight Front 26" : 850
  - Weight Front 27.5" : 905
  - Weight Front 29" : 945