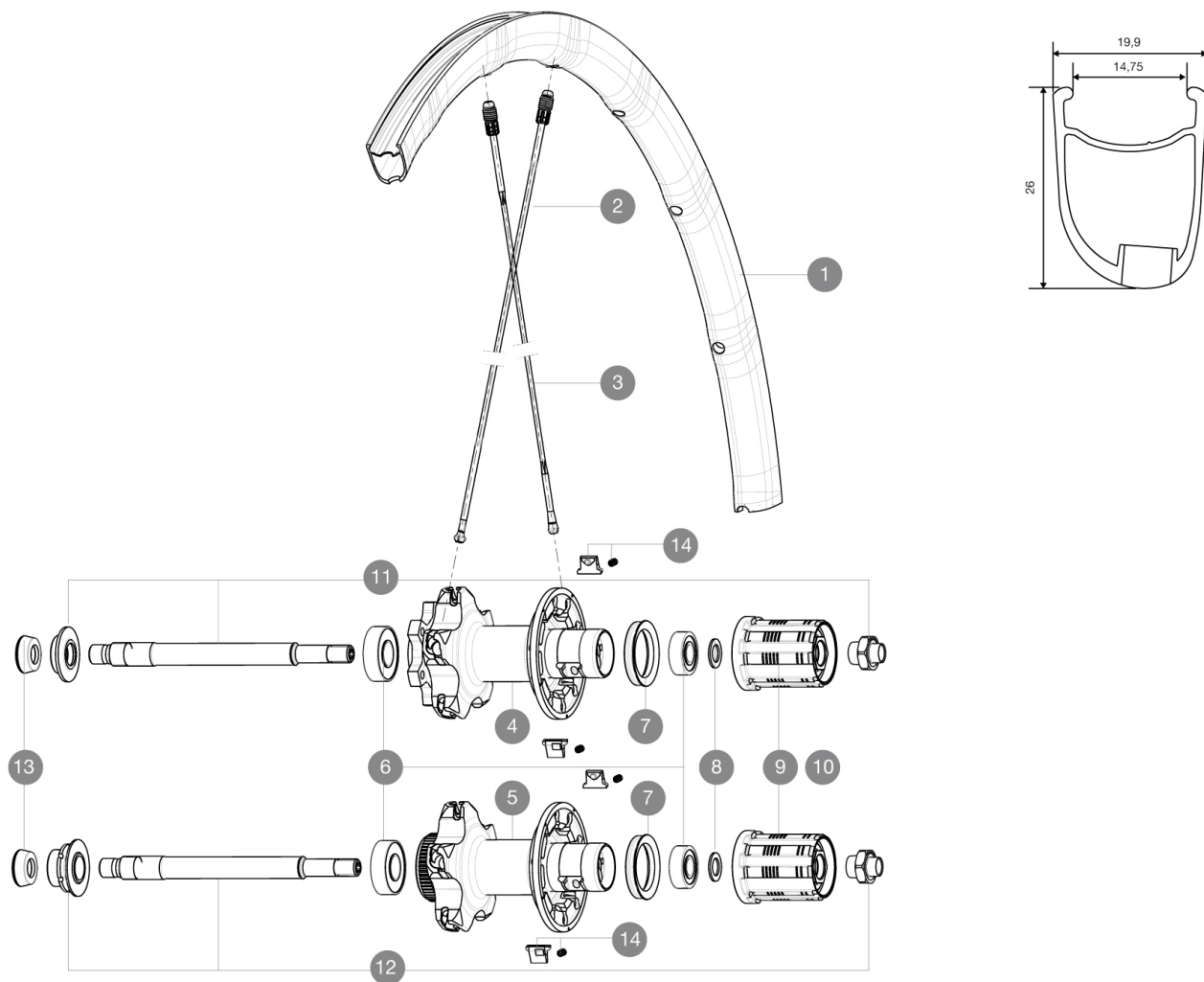


ASTM CATEGORY 2 : road and offroad with jumps less than 15cm
Recommended weight limit : 120kg

REFERENCES WHEELS

R58601 KsyProDisc16 CLRr R58401 KsyProDisc16 INTRr



RIMS



VALVE HOLE \bar{A} (MM): 6,5 :

1 V2290613 KIT REAR RIM KSYRIUM PRO DISC

ADAPTERS

13 35117301 FT/RR FORK REST R-SYS/CC ULTIMATE > 2013/KSY PRO CARB T

SPOKES

2 12029401 KIT 10 DS R-SYS SL/SLR CLINC BLK SPK 294,5mm
3 V2270501 KIT 12 DS KSY PRO/PRO DISC/SL C/PRO EXA SPK 273,5mm

HUB SHELLS

4	N/A	HUB BODY
5	N/A	HUB BODY
6	V2540101	REAR HUB B9+6001 BEARINGS 2015
7	99500001	FTSL/FTSX FREEHUB BODY SEAL
8	30872801	SET OF 3 INTERNAL SILVER SPACERS 9mm FTS-L
9	30871101	FTS-L ROAD FREEWHEEL BODY HG11 8/9 compatible
10	30871201	FTS-L ROAD FREEWHEEL BODY ED11 8/9 compatible
11	V2250601	KIT REAR AXLE KSYRIUM PRO DISC 6T
12	V2250401	KIT REAR AXLE KSYRIUM PRO DISC CL
14	M40578	FTSL PAWLS KIT (ROAD WHEELS)

MAVIC Ksyrium Pro Disc

DELIVERED WITH

BX601 quick releases	
Front 12 mm adapters	
Rear QR adapters	
Specific disc bolts	
Multifonction adjustment wrench	
User guide	

Specifications

RIMS

- **Material** : Mxtral
 - **Height** : 26mm, asymmetrical
 - **Joint** : SUP
 - **Drilling** : Fore
- Disc brake specific profile
- **Weight reduction** : ISM 4D
 - **Valve hole diameter** : 6.5 mm
 - **Tyre** : clincher
 - **ETRTO size** : 622x15C
 - **Recommended tyre sizes** : 23 to 32 mm

SPOKES

- **Material** : Zicral
- **Shape** : straight pull, bladed
- **Nipples** : Fore integrated aluminum
- **Count** : 20 front and rear
- **Lacing** : front crossed 2, rear Isopulse

WHEEL HUB

- **Front body** : carbon with aluminum flanges
 - **Rear body** : aluminum
 - **Axle material** : aluminum
- Adjustable sealed cartridge bearings
- **Freewheel** : FTS-L steel
 - **Front** : Quick release, 12 thru and 15 thru compatible

WHEEL WEIGHTS

Wheel weight 855