

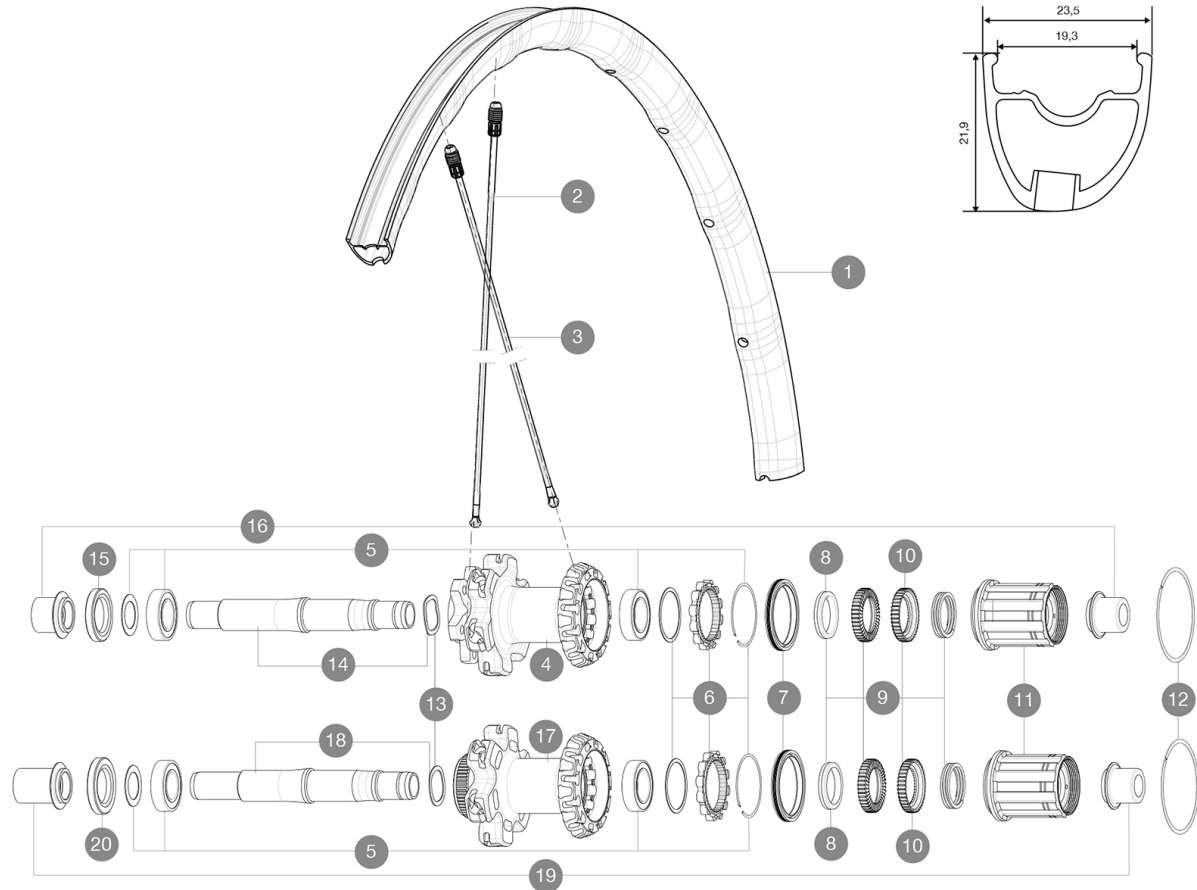
MAVIC *Ksyrium Pro Disc Allroad*

ASTM CATEGORY 2 : road and offroad with jumps less than 15cm
 Recommended weight limit : 120kg
 Recommended tyre sizes: 28 to 62 mm
 Max. Pressure: 28mm 7.7 bars - 110 PSI / 30mm 5.8 bars - 85 PSI

REFERENCES WHEELS

R73101 KsyProDiscAllroadRr CL

R72301 KsyProDiscAllroadRr INT

**RIMS**VALVE HOLE \bar{A} (MM): 6,5 :

| | | |
|---|----------|----------------------------------|
| 1 | V2402513 | KIT REAR RIM KSYRIUM PRO ALLROAD |
|---|----------|----------------------------------|

SPOKES

| | | |
|---|----------|---|
| 2 | V2272501 | KIT 12 FT/NDS KSYRIUM PRO D/ALLROAD PRO SPK 291,5mm |
| 3 | V2272601 | KIT 12 DS KSYRIUM PRO D 17C/ALLROAD PRO SPK 277mm |

HUB SHELLS



| | | |
|----|----------|--|
| 4 | N/A | HUB BODY |
| 5 | V2560201 | KIT ID360 BEARINGS 15/28/7 + 17/28/7 |
| 7 | V2251601 | KIT ID360 SEAL + GREASE |
| 8 | V2500501 | KIT ID360 3 PADS NOISE REDUCING |
| 9 | V2251701 | KIT ID360 2 RATCHETS + SPRING + GREASE |
| 10 | V2251801 | KIT 3 ID360 ROAD SPRINGS |
| 11 | V3430101 | HG11 Freewheel Body ID360 |
| 12 | V2252201 | KIT 2 REAR HUB RETENTION RINGS 48mm |
| 13 | V2251501 | KIT 3 ID360 WAVE WASHERS |
| 14 | V2251301 | KIT ID360 AXLE DISC 6 BOLTS |
| 15 | V2251001 | KIT ID360 HUB THREADED CAP UB+DISC 6 BOLTS (large) - while s |
| 17 | N/A | HUB BODY |
| 18 | V2251401 | KIT ID360 AXLE DISC CENTER LOCK |
| 20 | V2251101 | KIT ID360 HUB THREADED CAP DISC CENTER LOCK |

ADAPTERS

| | | |
|----|----------|-----------------------------------|
| 16 | B4989601 | ADAPTER Rr 12x142mm ID360 (6bolt) |
| 19 | B4989901 | ADAPTER Rr 12x142mm ID360 (CLock) |

MAVIC Ksyrium Pro Disc Allroad

DELIVERED WITH

| | |
|--|---|
| 1 bottle of Mavic Sealant | |
| 1 bottle of Mavic Sealant | |
| UST valve and accessories | |
| Front 12 mm adapters | |
| Specific disc bolts | |
| Multifunction adjustment wrench | |
| User guide | |
| Front 12 mm adapters (B4104201) 1 |  |
| Rear 12x142mm adapters for Instant Drive 360 (B49 896 01 for ID360 6T, B49 899 01 for ID360 CL) 1 |  |
| UST valve and accessories | |
| Specific disc bolts | |
| Multifunction adjustment wrench | |
| User guide | |

COMPATIBILITY

| | |
|---|--|
| Freewheel: Shimano/Sram, convertible to Campagnolo and XD-R with optional driver bodies | |
| Front axle: convertible from 12mm thru axle to quick release or 15mm thru axle with optional adapters | |
| Rear axle: 12mm thru axle, convertible to Quick Release with optional adapters | |

Specifications

RIMS

- **Material** : Mxstal
 - **Height** : 26mm, asymmetrical
 - **Joint** : SUP
 - **Drilling** : Fore
- Disc brake specific profile
- **Weight reduction** : ISM 4D
 - **Valve hole diameter** : 6.5 mm
 - **Material** : Mxstal
 - **Tyre** : UST Tubeless and tubetype
 - **ETRTO size** : 622x19C
 - **Height** : 26mm, asymmetrical
 - **Recommended tyre sizes** : 28 to 62 mm
 - **Joint** : SUP
 - **Drilling** : Fore

Disc brake specific profile

- **Weight reduction** : ISM 4D
- **Valve hole diameter** : 6.5 mm
- **Tyre** : UST Tubeless and tubetype
- **Internal width** : 19 mm
- **ETRTO size** : 622x19C

WHEEL HUB

- **Front and rear bodies** : aluminum
 - **Axle material** : aluminum
- Sealed cartridge bearings
- **Freewheel** : Instant Drive 360
 - **Front and rear bodies** : aluminum
 - **Axle material** : aluminum
 - **Front** : Quick release, 12 thru and 15 thru compatible
 - **Rear** : 12x142 (convertible to quick release with optional adapters)
- Sealed cartridge bearings
- **Freewheel** : Instant Drive 360
 - **Front** : Quick release, 12 thru and 15 thru compatible
 - **Rear** : 12x142 (convertible to quick release with optional adapters)

VERSIONS

- **Color** : Black only
- **Disc standard** : 6 Bolts or Center Lock(R)

WHEEL WEIGHTS

Wheel weight 850