

**MAVIC** XA Pro 29

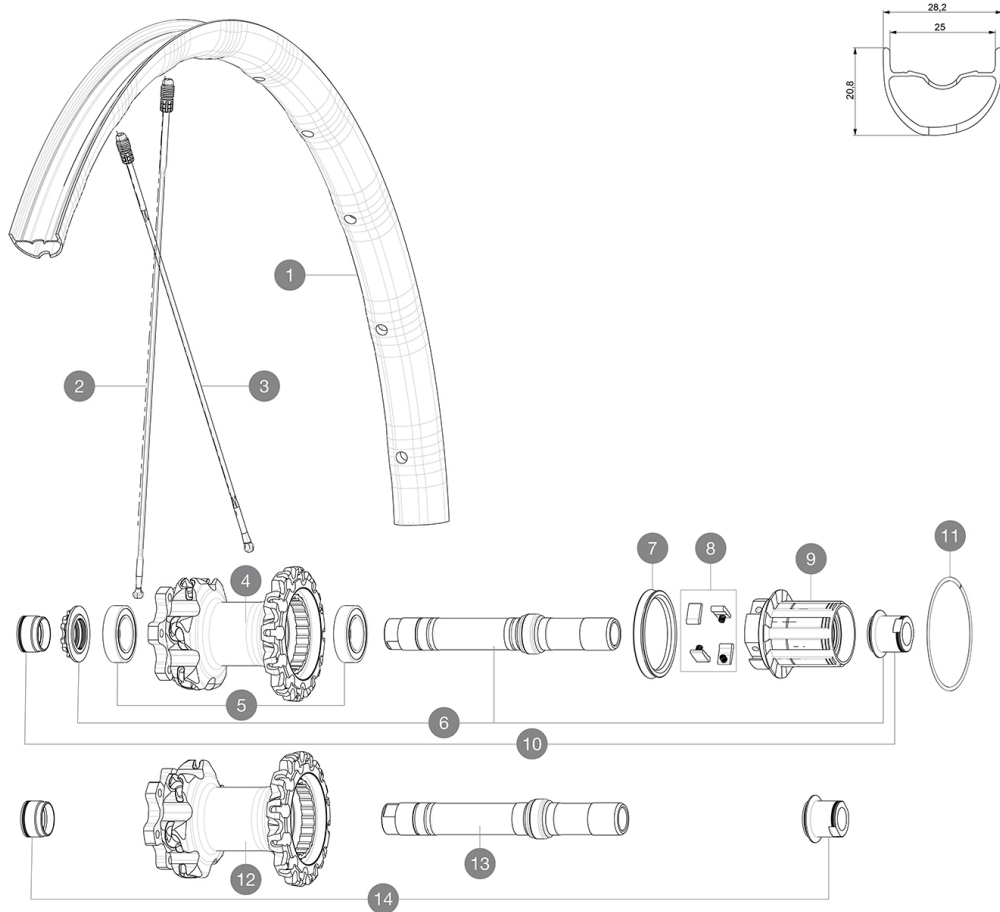
ASTM CATEGORY 3 : CROSS COUNTRY AND TRAIL RIDING

For a longer longevity of the wheel, Mavic recommends that the total weight supported by the wheels don't exceed 120kg, bike included

Recommended tyre sizes: 46mm to 64mm (1.8" to 2.5")

**REFERENCES WHEELS**

R22211	Xa Pro 29 Rr	R22541	Xa Pro 29 Rr XD
R22221	Xa Pro 29 Bst Rr	R22551	Xa Pro 29 Rr Bst XD

**RIMS**

&amp;NBSP;:

1	V2318713	KIT REAR RIM XA PRO 29"
---	----------	-------------------------

**SPOKES**

2	V2385601	KIT 1 FT/RR XA PRO 29" BUTTED ALU SPOK 293mm - while stock
2	V2384801	KIT 12 FT/NDS CROSSMAX PRO 29" AL SPK 293mm
3	35113801	"KIT 10 DS M7/7 XMAX SLR/PRO 29"" SPK 269,5mm"

**HUB SHELLS**

4	N/A	HUB BODY
5	M40076	HUB BEARINGS 17x30x7 6903 x 2
6	30870401	REAR QRM + AXLE KIT ITS4 135mm from 2012
7	99610701	ITS-4 FREEWHEEL SEAL
8	99610601	PAWLS KIT FOR ITS-4 (OR TS-2)
9	35126001	ITS-4 FREEWHEEL BODY + SEAL 2013 (NO PAWLS)
11	30871801	ELASTIC RING 56mm diam. ITS-4 20 SPOKES
12	N/A	HUB BODY
13	V2370801	KIT REAR QRM+ AXLE BOOST ITS-4 148mm

**ADAPTERS**

10	30859301	AXLE ADAPTER Rr 12x142/148mm Pro Carb MTB (Grey)
	30873101	2 REAR REDUCERS 12/9,5mm 2012 ITS4 HUB
	30872201	FRAME SUPPORT ITS-4 135mm REAR AXLE > 2012

**MAVIC** XA Pro 29**DELIVERED WITH**

UST valve and accessories (129 838 01)	
Tubeless rim tape	
User guide	

**COMPATIBILITY**

Freewheel: Shimano/Sram or XD	
Front axle: convertible from 15mm thru axle to Quick Release with optional adapters	
Rear axle: 12mm thru axle, convertible to Quick Release with optional adapters	

**Specifications****RIMS**

- **Material** : Mxxtal
  - **Joint** : SUP
  - **Drilling** : traditional
  - **Weight reduction** : ISM 4D
  - **Valve hole diameter** : 6.5 mm
  - **Tyre** : UST Tubeless and tubetype
  - **Internal width** : 25 mm
  - **ETRTO size 27.5"** : 584x25TSS
  - **ETRTO size 29"** : 622x25TSS
- Use with Mavic Tubeless Tape

**SPOKES**

- **Material** : Zicral
- **Count** : 24 front and rear
- **Lacing** : front crossed 2, rear Isopulse
- **Lacing** : front and rear crossed 2

**WHEEL HUB**

- **Front and rear bodies** : aluminum
  - **Axle material** : aluminum
- Sealed cartridge bearings (QRM)
- **Freewheel** : ITS-4 alloy

**VERSIONS**

- **Color** : Black only
- **Disc standard** : 6 Bolts only
- **Hub width** : Boost (front 110, rear 148) or Non-Boost (front 100, rear 135/142)

**WHEEL WEIGHTS**