

# MAVIC Ksyrium Elite Disc UST

ASTM CATEGORY 2 : road and offroad with jumps less than 15cm

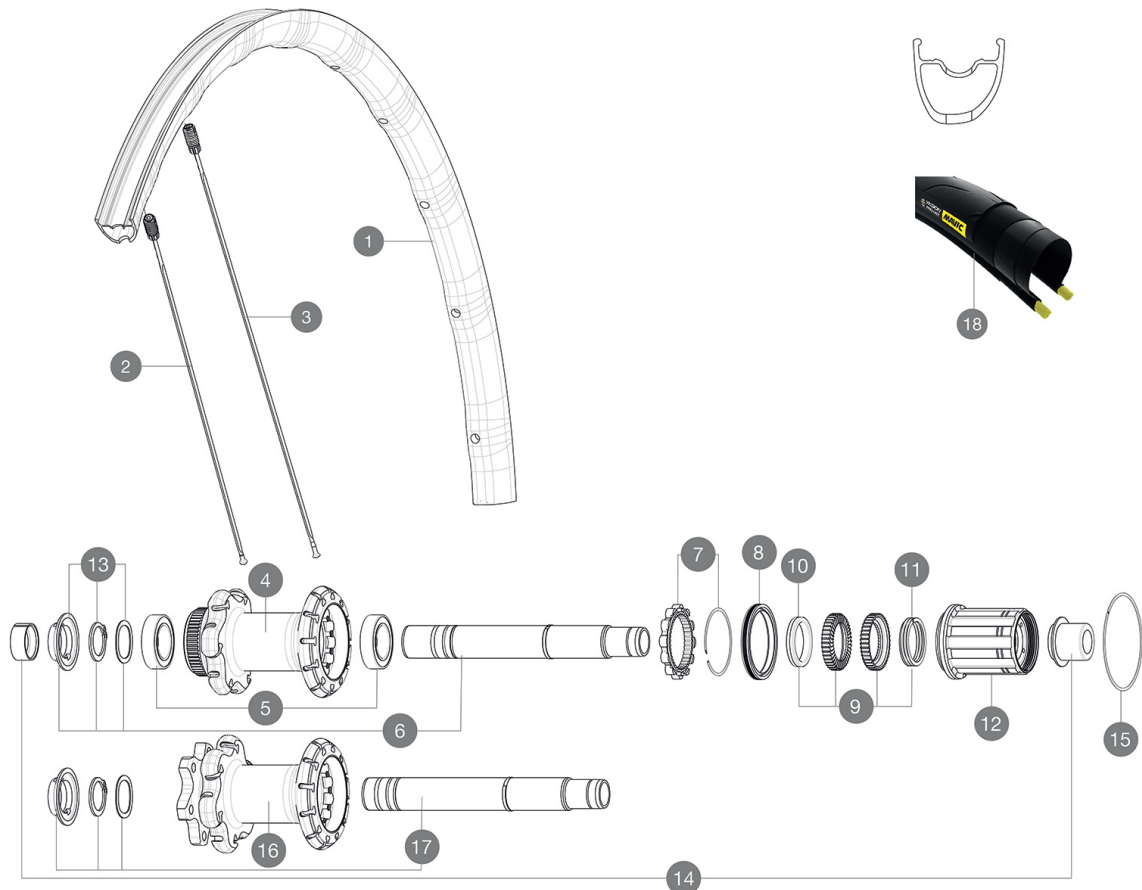
For a longer longevity of the wheel, Mavic recommends that the total weight supported by the wheels don't exceed 120kg, bike included

Recommended tyre sizes: 25 to 32 mm

Max. Pressure tubeless: 25mm 6 bars - 87 PSI, 28mm 5 bars - 70 PSI. Max pressure tubetype: 25mm 7 bars - 102 PSI

## REFERENCES WHEELS

|        |                       |        |                       |
|--------|-----------------------|--------|-----------------------|
| R20481 | KsyEI UST D6B12x142Rr | R20491 | KsyEI UST DCL12x142Rr |
|--------|-----------------------|--------|-----------------------|



## RIMS



&NBSP;:

|   |          |                                     |
|---|----------|-------------------------------------|
| 1 | V2731113 | KIT REAR RIM KSYRIUM ELITE DISC UST |
|---|----------|-------------------------------------|

## SPOKES

|   |          |  |
|---|----------|--|
| 2 | V2273401 | KIT 12 FRT/NON DRIVE SIDE BUTTED SPOKE 297mm |
| 3 | V2273501 | KIT 12 DRIVE SIDE BUTTED SPOKE 280mm         |

## HUB SHELLS

|    |          |   |
|----|----------|---|
| 4  | N/A      | HUB BODY                                      |
| 5  | V2560401 | KIT 2 BEARINGS 17x28x7 + WAVED WASHER + CLIP  |
| 6  | V2252901 | KIT ID360 CENTER LOCK 135/142mm AXLE W/CLIP   |
| 7  | V2252701 | KIT ID360 INSERT SHAPED EAR LOBE > 2017       |
| 8  | V2251601 | KIT ID360 SEAL + GREASE                       |
| 9  | V2251701 | KIT ID360 2 RATCHETS + SPRING + GREASE        |
| 10 | V2500501 | KIT ID360 3 PADS NOISE REDUCING               |
| 11 | V2251801 | KIT 3 ID360 ROAD SPRINGS                      |
| 12 | V3430101 | HG11 Freewheel Body ID360                     |
| 15 | V2252201 | KIT 2 REAR HUB RETENTION RINGS 48mm           |
| 16 | N/A      | HUB BODY                                      |
| 17 | V2253001 | KIT ID360 6 BOLTS 135/142mm AXLE WITH CIRCLIP |

## TYRES

|    |          |                       |
|----|----------|-----------------------|
| 18 | 39938825 | Yksion Pro UST 700x25 |
|----|----------|-----------------------|

## ADAPTERS

|    |          |                                |
|----|----------|--------------------------------|
| 14 | V2510701 | ID360V2RrAxleAdapt12x142/148   |
|    | V2510901 | ID360 EVO RrAxleAdpt12x135/150 |
|    | V2510801 | ID360 V2 RrAxleAdapt9x135      |

# MAVIC Ksyrium Elite Disc UST

## DELIVERED WITH

|  |  |
|--|--|
| Mavic tyre sealant (rear wheel)<br>(355 466 01)                  |  |
| Mavic tyre sealant (rear wheel)<br>(355 466 01)                  |  |
| Tyre sealant syringe   |  |
| Tyre sealant syringe   |  |
| Front QR adapters<br>(996 941 01 for MTB or B41 043 01 for road) |  |
| Rear QR adapters for Instant Drive 360<br>(B49 894 01)           |  |
| UST valve and accessories<br>(129 838 01)                        |  |
| UST valve and accessories<br>(129 838 01)                        |  |
| Specific disc bolts<br>(308 719 01)                              |  |
| User guide   |  |
| User guide   |  |

## COMPATIBILITY

|  |  |
|--|--|
| Freewheel: Shimano/Sram, convertible to Campagnolo and XD-R with optional driver bodies  |  |
| Freewheel: Shimano/Sram, convertible to Campagnolo and XD-R with optional driver bodies  |  |
| Front axle: 12mm thru axle. Optional: Easily convertible to quick release with adequate adapters, convertible to 15mm with complete axle replacement |  |
| Front axle: 12mm thru axle, easily convertible to quick release with included adapters. Convertible to 15mm with complete axle replacement           |  |
| Front axle: 12x100 thru axle, easily convertible to quick release with included adapters. Not compatible with 15mm through axles.                    |  |
| Rear axle: 12mm thru axle, convertible to Quick Release with optional adapters (not available in Germany)  |  |
| Rear axle: 12mm thru axle, convertible to Quick Release with included adapters   |  |

## Specifications

### RIMS

- **Material** : Mxstal
  - **Material** : Mxstal
  - **Height** : 22 mm
  - **Height** : 22 mm
  - **Joint** : SUP
  - **Joint** : SUP
  - **Drilling** : Fore
  - **Drilling** : Fore
- Disc brake specific profile
- **Weight reduction** : ISM 4D
- Disc brake specific profile
- **Weight reduction** : ISM 4D
  - **Valve hole diameter** : 6.5 mm
  - **Valve hole diameter** : 6.5 mm
  - **Tyre** : UST Tubeless and tubetype
  - **Tyre** : UST Tubeless and tubetype
  - **Internal width** : 19 mm
  - **Internal width** : 19 mm
  - **ETRTO size** : 622x19TC Road
  - **ETRTO size** : 622x19TC Road

### SPOKES

- **Material** : steel
- **Material** : steel
- **Shape** : straight pull, bladed
- **Shape** : straight pull, bladed
- **Nipples** : Fore integrated aluminum
- **Nipples** : Fore integrated aluminum
- **Count** : 24 front and rear
- **Count** : 24 front and rear

### WHEEL HUB

- **Front and rear bodies** : aluminum
- **Front and rear bodies** : aluminum
- **Axle material** : aluminum
- **Axle material** : aluminum
- **Front bearings** : adjustable sealed cartridge bearings (QRM+), Rear bearings auto adjust sealed cartridge bearings (QRM Auto)
- **Front bearings** : adjustable sealed cartridge bearings (QRM+), Rear bearings auto adjust sealed cartridge bearings (QRM Auto)
- **Freewheel** : Instant Drive 360
- **Freewheel** : Instant Drive 360
- **Front** : Quick release, 12x100 and 15x100 through axle compatible
- **Rear** : Quick Release, 12x142 and 12x135 compatible

### VERSIONS

- **Color** : Black only
- **Disc standard** : Center Lock(R) only
- **Disc standard** : 6 Bolts or Center Lock(R)

### WHEEL WEIGHTS

900