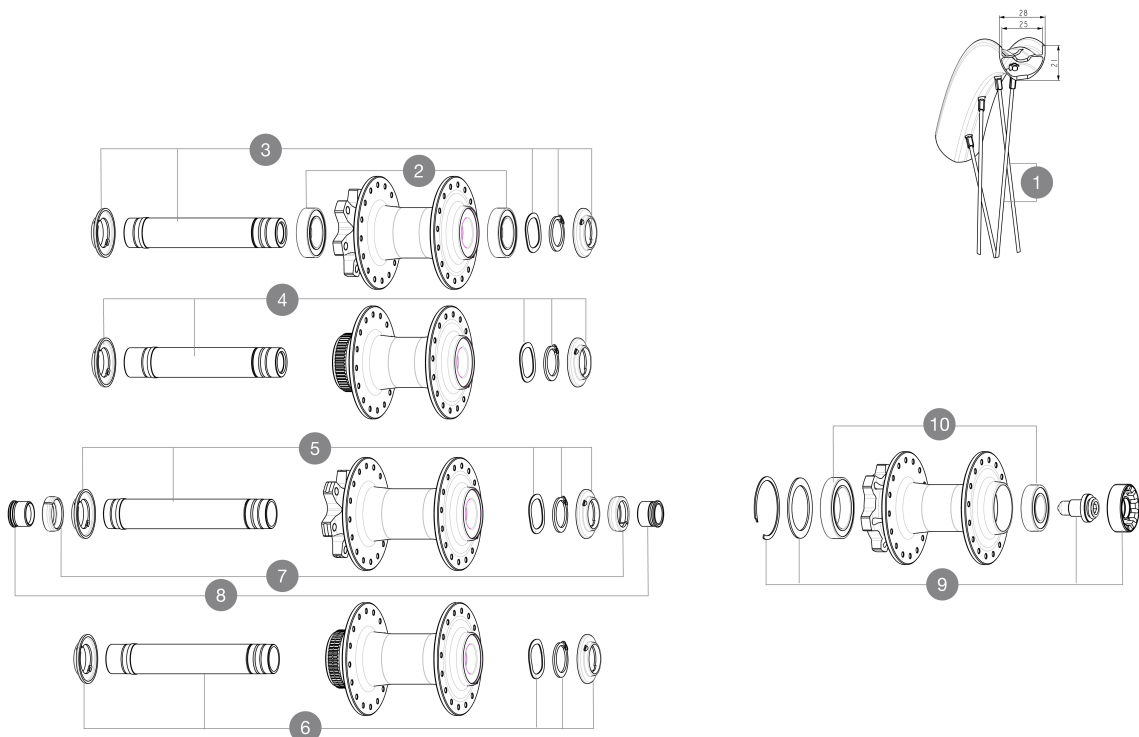


ASTM CATEGORY 2 : road and offroad with jumps less than 15cm
 Front axle: convertible from 15mm thru axle to Quick Release with included adapters
 Recommended tire sizes: 28 to 64 mm (1.1" to 2.5")
 Boost : Torque Caps for Center Lock hub (V2374401)
 For a longer longevity of the wheel, Mavic recommends that the total weight supported by the wheels doesn't exceed 180kg, E-bike included

REFERENCES WHEELS



SPOKES

| | | |
|---|-----------|---|
| 1 | V00062431 | Kit 16 ft/rr Jbent bk rd spk 293 29"+np |
|---|-----------|---|

HUB SHELLS

| | | |
|----|----------|---|
| 2 | V2500901 | KIT BEARINGS 18x30x7 + WAVED WASHER + CLIP |
| 3 | V2375501 | Kit QRM auto front axle 100x12/15mm D6T |
| 4 | V2374001 | KIT 12x100mm FRONT AXLE DCL QRM AUTO ALLROAD > 2019 |
| 5 | V2372401 | KIT 110mm AXLE QRM AUTO MTB > 2019 |
| 6 | V2375601 | Kit 110mm axle QRM auto MTB from 2019 DCL |
| 9 | 36709301 | ASSEMBLY KIT FOR LEFTY SUPERMAX WHEELS |
| 10 | M40771 | BEARING KIT FOR LEFTY 50 & 60 HUB |

ADAPTERS

| | | |
|---|----------|--------------------------------------|
| 7 | V2372501 | 15mm MTB Axle Cap QRM Auto From 2019 |
| 8 | V2680201 | 12mmFtRoadAxleAdaptersQRM |
| | V2680301 | "Kit Ft Road Adapter 12 >> 9mm" |
| | 99694101 | ADAPTER Ft 15 to 9mm QR |

MAVIC E-SPEEDCITY 1 700

2023
FRONT

DELIVERED WITH

| | |
|------------------------------------|--|
| User guide | |
| Rear QR adapters (non-boost wheel) | |
| Rear QR adapters (non-boost wheel) | |
| Rim tape | |
| User guide | |
| User guide | |
| Rim tape | |

COMPATIBILITY

| | |
|--|--|
| Freewheel: Shimano/Sram, convertible to Campagnolo ED11, N3W and XD-R with optional driver bodies | |
| Front axle: 12mm thru axle, easily convertible to quick release with optional adapters. Convertible to 15mm with complete axle replacement | |
| Freewheel body: convertible SRAM XD road (kit V2580101 sold separately) | |
| Freewheel body: convertible SRAM XD road (kit V2580101 sold separately) | |
| Rear axle: 12mm thru axle, convertible to Quick Release with optional adapters and axle replacement | |
| Freewheel body: convertible SHIMANO HG light road (kit V3850101 sold separately) | |
| Freewheel body: convertible SHIMANO HG light road (kit V3850101 sold separately) | |
| Freewheel body: convertible SHIMANO MS (kit V3990101 sold separately) | |
| Freewheel body: convertible SHIMANO MS (kit V3990101 sold separately) | |
| Front axle: 12mm thru axle, easily convertible to quick release with optional adapters. Convertible to 15mm with complete axle replacement | |
| Front axle: 12mm thru axle, easily convertible to quick release with optional adapters. Convertible to 15mm with complete axle replacement | |
| Freewheel body: convertible CAMPAGNOLO N3W (kit V4270101 sold separately) | |
| Freewheel body: convertible CAMPAGNOLO N3W (kit V4270101 sold separately) | |
| ID360 Shimano Micro Spline alloy freewheel body (V3990101) | |
| ID360 Sram XD freewheel body (V3740101) | |
| Rear axle: for fixing nuts only (included), M9x1 thread | |
| Rear axle: for fixing nuts only (included), M9x1 thread | |
| ID360 Shimano Micro Spline alloy freewheel body (V3990101) | |