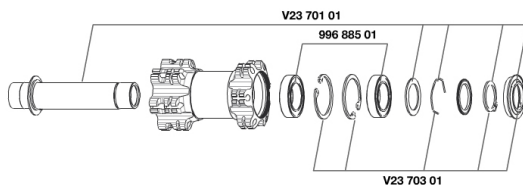


REFERENCES WHEELS

326479 CROSSRIDE D29 15FRT



RIMS



&NBSP;;

35123915 "KIT FRONT/REAR CROSSRIDE DISC 29" RIM"

SPOKES

35126101 "KIT 12 FT/NDS XRIDE 29"/KSYRIUM DISC SPK 295mm"

HUB SHELLS

V2371101 KIT FRONT QRM AXLE 100mm/BOOST 110mm

V2370301 KIT FRONT AUTO ADJUSTING PLAY 15mm AXLE

99688501 BEARING KIT 9/12/15 D6T HUB 20x32x7 6804

MAVIC Crossride 29

DELIVERED WITH

| | |
|--------------------------|--|
| BR101 rear quick release | |
| Rim tape | |
| Rear QR adapters | |
| Valve reducer | |
| User guide | |

Specifications

RIMS

- **Material** : 6106 Aluminum
 - **Color** : black anodized
 - **Joint** : pinned
 - **Drilling** : traditional
 - **Eyelet** : H2 technology
- Disc brake specific profile
- **Valve hole diameter** : 8,5 mm with pop off reducer
 - **Tyre** : tubetype
 - **Internal width** : 19 mm
 - **ETRTO size** : 622x19C
 - **Recommended tyre sizes** : 1.5 to 2.3

SPOKES

- **Material** : steel
- **Shape** : straight pull, bladed
- **Color** : black
- **Nipples** : brass, self lock concept
- **Count** : 24 front and rear
- **Lacing** : front and rear crossed 2

WHEEL HUB

- **Front and rear bodies** : aluminum
 - **Color** : black
 - **Front and rear axle material** : aluminum
- QRM
TS-2 alloy

WHEEL WEIGHTS

Wheel weight 945