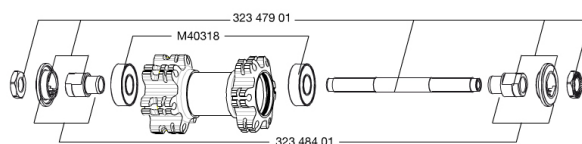


REFERENCES WHEELS

354034 CROSSONE 26 FRT

**RIMS**

&NBSP;;

| | | |
|---|----------|------------------------------------|
| 1 | 36693015 | "KIT FRONT/REAR CROSSONE 26"" RIM" |
|---|----------|------------------------------------|

SPOKES

| | | |
|---|----------|----------------------------------|
| 2 | 36689801 | KIT 12 FT/NDS CROSSONE SPK 264mm |
|---|----------|----------------------------------|

HUB SHELLS

| | | |
|---|----------|-----------------------------|
| 4 | M40318 | KIT 2 HUB BEARINGS 6001 |
| 5 | 32347901 | FRONT AXLE QRM UB |
| 6 | 32348401 | EXPANSIBLE BEARINGS SUPPORT |

DELIVERED WITH

| | |
|----------------------|--|
| BR101 quick releases | |
| Rim tape | |
| Valve reducer | |
| User guide | |

Specifications
RIMS

- **Material** : 6106 Aluminum
 - **Joint** : pinned
 - **Drilling** : traditional
- Disc brake specific profile
- **Valve hole diameter** : 8,5 mm with pop off reducer
 - **Tyre** : tubetype
 - **Internal width** : 19 mm
 - **ETRTO size 26"** : 559x19C
 - **ETRTO size 650b/27.5"** : 584x19c
 - **ETRTO size 29"** : 622x19C
 - **Recommended tyre sizes** : 1.5 to 2.3

SPOKES

- **Material** : steel
- **Shape** : straight pull, round
- **Nipples** : brass, ABS
- **Count** : 24 front and rear
- **Lacing** : front and rear crossed 2

WHEEL HUB

- **Front and rear bodies** : aluminum
 - **Body** : aluminum
 - **Axle material** : steel
- Sealed cartridge bearings
- **Freewheel** : FTS-X steel

WHEEL WEIGHTS

Wheel weight
 Weight Front 26": 850
 Weight Front 27.5": 905
 Weight Front 29": 950