

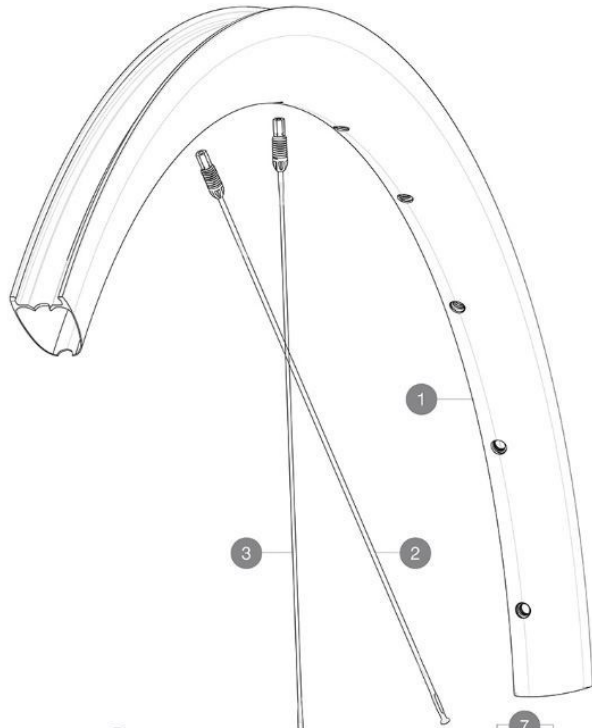
**MAVIC** **COSMIC SLR 40 BG**

ASTM CATEGORY 1 : road only

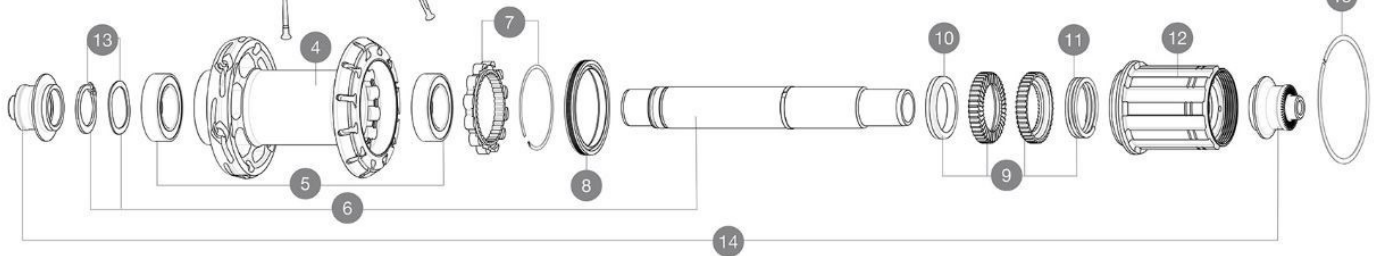
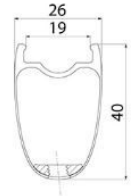
Maximum tyre pressure: 4.4bar/64PSI with a 28mm tyre - 2.6bar/38PSI with a 64mm tyre

For a longer longevity of the wheel, Mavic recommends that the total weight supported by the wheels doesn't exceed 120kg, bike included

Maximum tyre size: width 62mm - pressure max. 3.8Bar/55PSI

**REFERENCES WHEELS**

Specifications	Maxi target
Frontal run out	0,4mm
Lateral run out	0,3mm
Centring	1,0mm (2x0,5)
Tension daN	127 > 153
FWB side	

**RIMS**

&amp;NBSP;:

**1** V4094813 Kit Rear rim Cosmic SLR 40 RB**ADAPTERS****14** V2253101 KIT REAR AXLE ADAPTOR QUICK RELEASE ID360**SPOKES**

**2** V3669401 Kit 12 DS Cosmic SLR40 aero ss spk266 M6  
**3** V3669301 Kit 12 NDS Cosmic SLR40 aero ss spk285M6

**HUB SHELLS**

**4** N/A HUB BODY  
**5** V2560401 KIT 2 BEARINGS 17x28x7 + WAVED WASHER + CLIP  
**6** V2252801 KIT ID360 UB REAR AXLE W/CLIP/WAVED WASHER  
**7** V2252701 KIT ID360 INSERT SHAPED EAR LOBE > 2017  
**8** V2251601 KIT ID360 SEAL + GREASE  
**9** V2251701 KIT ID360 2 RATCHETS + SPRING + GREASE  
**10** V2500501 KIT ID360 3 PADS NOISE REDUCING  
**11** V2251801 KIT 3 ID360 ROAD SPRINGS  
**12** V3430101 HG11 Freewheel Body ID360  
**12** V2560501 KIT ADJUST. SYSTEM QRM AUTO ID360 for 17x28x7 bearing  
**15** V2252201 KIT 2 REAR HUB RETENTION RINGS 48mm

# MAVIC COSMIC SLR 40 BG

2024  
REAR

## DELIVERED WITH

Mavic tyre sealant (rear wheel) (355 466 01)	
Carbon brake pads (V24 603 01 Shimano/Sram, V24 604 01 Campagnolo)	
UST valve and accessories (129 838 01)	
User guide	

## COMPATIBILITY

Freewheel body: convertible SRAM XD road (kit V2580101 sold separately)	
Freewheel body: convertible SHIMANO HG light road (kit V3850101 sold separately)	
Freewheel body: convertible SHIMANO MS (kit V3990101 sold separately)	
Freewheel body: convertible CAMPAGNOLO ED (kit V3440101 sold separately)	
Freewheel body: convertible CAMPAGNOLO N3W (kit V4270101 sold separately)	
ID360 Campagnolo freewheel body ([V3440101])	
FTS-L Shimano / Sram freewheel body ([30871101] - Delivered on the wheel)	
Front axle: convertible from 15mm thru axle to Quick Release with adapters (delivered with non-boost wheel)	

## Specifications

### RIMS

- **Material** : 100% carbon fiber
- **Height** : 40 mm
- **Internal width** : 19 mm
- **Drilling** : Fore Carbon tapeless tubeless technology (front 18 holes and rear 24 holes)
- **Brake track** : UB Control
- **ETRTO size** : 622x19TC
- **Tire** : UST Tubeless and tubetype

### SPOKES

- **Material** : steel
- **Shape** : straight pull, round (front and rear non drive side) and straight pull, flat (rear drive side)
- **Shape** : straight pull, flat, double butted
- **Screw** : M6

### WHEEL HUB

- **Body** : aluminum
  - **Body design** : INFINITY
  - **Axle material** : aluminum
- Hub available for Center Lock brake rotors only
- **Axles** : Front 15X110 (Boost) or 15x100 ; Rear 12X148 (Boost) or 12x142
  - **Freewheel** : Shimano HG road
  - **Freewheel** : FTS-L steel

### WHEEL WEIGHTS