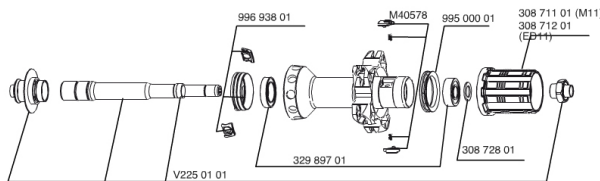
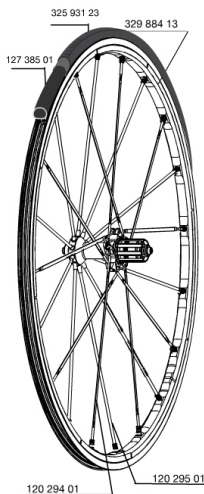


## REFERENCES WHEELS

325669 R-SYS SLR 013 ED11 WTS

325668 R-SYS SLR 013 M11 WTS



## RIMS



&NBSP;:

32988413 KIT REAR R-SYS SLR CLINCHER 2013 ISM 3D RIM

## SPOKES

12029401 KIT 10 DS R-SYS SL/SLR CLINC BLK SPK 294,5mm

99693801 2 SILVER TRACOMP RINGS + CLIPS

12029501 KIT 10 NDS R-SYS SLR CLINC BLACK SPOKE 284mm

## HUB SHELLS

M40578 FTSL PAWLS KIT (ROAD WHEELS)

30871201 FTS-L ROAD FREEWHEEL BODY ED11 8/9 compatible

32989701 REAR HUB QRM SL BEARINGS 2013

30871101 FTS-L ROAD FREEWHEEL BODY HG11 8/9 compatible

99500001 FTSL/FTSX FREEHUB BODY SEAL

V2250101 KIT REAR AXLE R-SYS SLR

30872801 SET OF 3 INTERNAL SILVER SPACERS 9mm FTS-L

## MAINTENANCE

12738501 Road Innertube Presta 48mm

## TYRES

32593123 YksionProSSCPowerLink 23

# MAVIC R-Sys SLR C

## DELIVERED WITH

BR601 quick releases	
BR601 quick releases	
Wheelbags	
Wheelbags	
Computer magnet (front wheel)	
Computer magnet (front wheel)	
Multifonction adjustment wrench	
Multifonction adjustment wrench	
Tracomp ring tool	
Tracomp ring tool	
User guide	
User guide	

## Specifications

### RIMS

- **Material** : Mxstal
- **Material** : Mxstal
- **Height** : front 22 mm, rear 25 mm asymmetrical
- **Color** : Exalith
- **Joint** : SUP
- **Height** : front 22 mm, rear 25 mm asymmetrical
- **Joint** : SUP
- **Drilling** : Fore
- **Drilling** : Fore
- **Brake track** : Exalith 2
- **Weight reduction** : ISM 3D
- **Valve hole diameter** : 6.5 mm
- **Brake track** : Exalith 2
- **Tyre** : clincher or tubular
- **Weight reduction** : ISM 3D
- **Valve hole diameter** : 6.5 mm
- **Tyre** : clincher or tubular
- **ETRTO size** : 622x15C
- **ETRTO size** : 622x15C
- **Recommended tyre sizes** : 19 to 32 mm
- **Recommended tyre sizes** : 19 to 32 mm

### WHEEL HUB

- **Front and rear bodies** : aluminum
- **Front and rear bodies** : aluminum
- **Color** : black
- **Front and rear axle material** : aluminum
- **Front and rear axle material** : aluminum
- QRM SL
- FTS-L steel
- QRM SL
- FTS-L steel

### WHEEL WEIGHTS

Wheel weight 740

### SPOKES

Download date: 2024-07-16 / Update date: 2022-03-01

- **Material** : carbon fiber (front and rear non drive side) and Zircal (rear drive side)