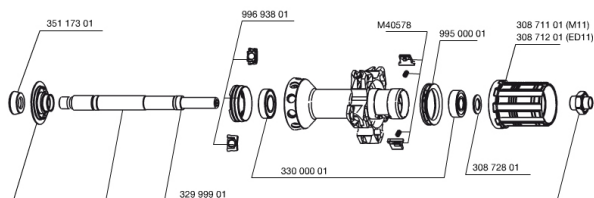
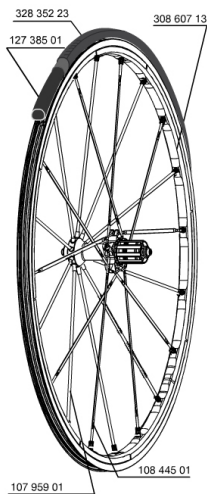


REFERENCES WHEELS

328276 R-SYS 013 ED11 WTS

328275 R-SYS 013 M11 WTS



RIMS



&NBSP;:

30860713 KIT REAR RIM R-SYS 12

SPOKES

10844501 KIT 10 DRIVE SIDE ROUND ALU SPK 294,5mm R-SYS
10795901 KIT 10 NDS R-SYS CARBON TUB SILV SPK 283,5mm
99693801 2 SILVER TRACOMP RINGS + CLIPS

HUB SHELLS

33000001 REAR HUB B9+6901 BEARINGS 2013
30871101 FTS-L ROAD FREEWHEEL BODY HG11 8/9 compatible
99500001 FTSL/FTSX FREEHUB BODY SEAL
30872801 SET OF 3 INTERNAL SILVER SPACERS 9mm FTS-L
M40578 FTSL PAWLS KIT (ROAD WHEELS)
32999901 REAR AXLE KIT R-SYS 2013
30871201 FTS-L ROAD FREEWHEEL BODY ED11 8/9 compatible

MAINTENANCE

12738501 Road Innertube Presta 48mm

TYRES

32835223 YksionProWhite23PowerLink 23

ADAPTERS

35117301 FT/RR FORK REST R-SYS/CC ULTIMATE > 2013/KSY PRO CARB T

DELIVERED WITH

BR601 quick releases	
BR601 quick releases	
Wheelbags	
Wheelbags	
Computer magnet (front wheel)	
Computer magnet (front wheel)	
Multifonction adjustment wrench	
Multifonction adjustment wrench	
Tracomp ring tool	
Tracomp ring tool	
User guide	
User guide	

Specifications**RIMS**

- **Material** : Mxstal
- **Material** : Mxstal
- **Height** : front 22 mm, rear 25 mm asymmetrical
- **Color** : black anodized
- **Height** : front 22 mm, rear 25 mm asymmetrical
- **Joint** : SUP
- **Drilling** : Fore
- **Joint** : SUP
- **Drilling** : Fore
- **Brake track** : UB Control
- **Weight reduction** : ISM
- **Valve hole diameter** : 6.5 mm
- **Brake track** : UB Control
- **Weight reduction** : ISM
- **Tyre** : clincher
- **Valve hole diameter** : 6.5 mm
- **Tyre** : clincher
- **ETRTO size** : 622x15C
- **ETRTO size** : 622x15C
- **Recommended tyre sizes** : 19 to 32 mm
- **Recommended tyre sizes** : 19 to 32 mm

SPOKES

- **Material** : carbon fiber (front and rear non drive side) and Zircal (rear drive side)

WHEEL HUB

- **Front and rear bodies** : aluminum
- **Front and rear bodies** : aluminum
- **Front and rear axle material** : aluminum
- **Color** : black
- **QRM+**
- **Front and rear axle material** : aluminum
- **FTS-L steel**
- **QRM+**
- **FTS-L steel**

WHEEL WEIGHTS

Wheel weight 780