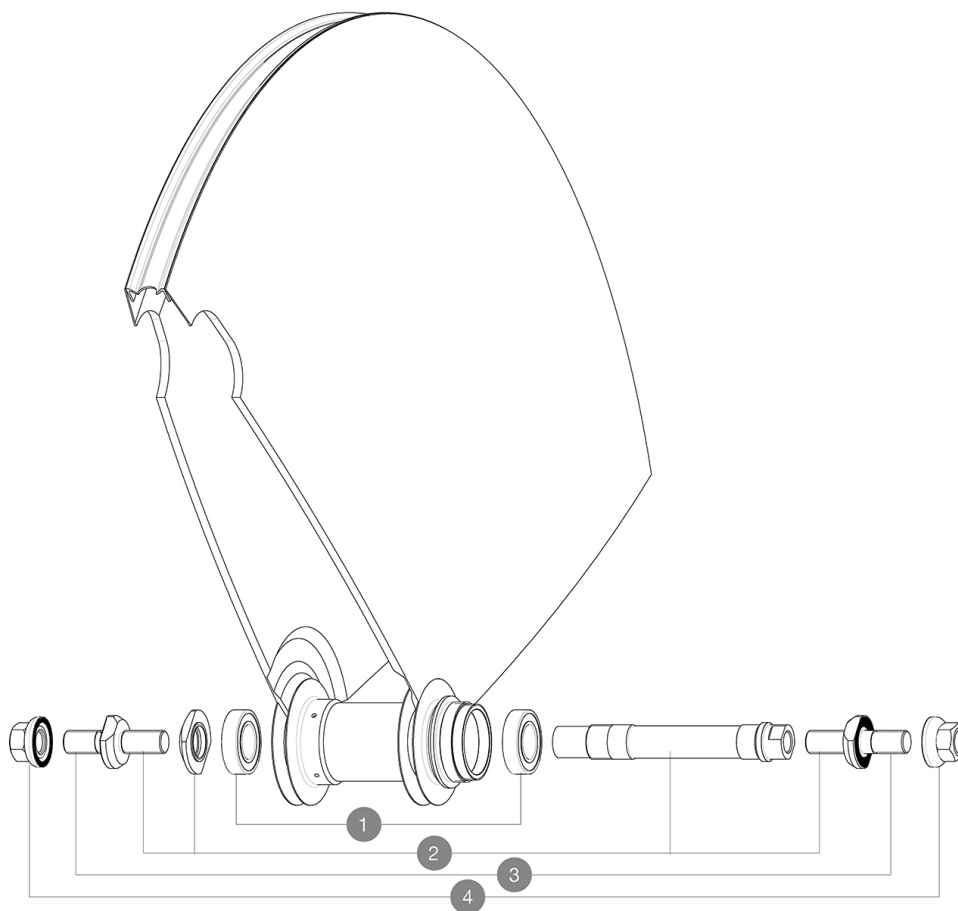


ASTM CATEGORY 1 : road only  
 Recommended weight limit : 120kg  
 Recommended tyre sizes: 21 to 28 mm  
 Max. Pressure: see indication on wheel and tyre. If they differ, use the lower of the 2  
 Max. Pressure: 23mm 8.7 bars - 125 psi  
 Minimum cog width : 7.5mm  
 Minimum cog width : 7.5mm

## REFERENCES WHEELS

|        |                    |        |                    |
|--------|--------------------|--------|--------------------|
| R56601 | COMETE TRACK T 700 | R99351 | COMETE TRACK T 700 |
|--------|--------------------|--------|--------------------|



## HUB SHELLS

|   |          |   |
|---|----------|---|
| 1 | M40129   | KIT 2 BEARINGS 6902 15x28x7                       |
| 2 | M40128   | REAR COMETE TRACK AXLE + ADJT.NUT + FORK SUPPORTS |
| 3 | V2390101 | KIT OF 2 END BOLTS AXLE PART FOR COMETE TRACK     |
| 4 | M40772   | NUT/WASHER KIT TRACK R.COMETE                     |

## OPTIONS

|           |  |
|-----------|--|
| V00034231 | Kit XL axle bolts for rear Comet Track |
|-----------|--|

# MAVIC **COMETE TRACK**

## DELIVERED WITH

|                |  |
|----------------|--|
| User guide     |  |
| Fixing nuts    |  |
| Wheelbag       |  |
| Wheelbag       |  |
| Valve extender |  |
| Fixing nuts    |  |
| Cog lock nut   |  |
| Fixing nuts    |  |
| Fixing nuts    |  |
| Fixing nuts    |  |
| Fixing nuts    |  |
| Fixing nuts    |  |
| Fixing nuts    |  |
| User guide     |  |
| Valve extender |  |
| Valve extender |  |
| Valve extender |  |
| Valve extender |  |
| Valve extender |  |
| Valve extender |  |

## COMPATIBILITY

|   |  |
|---|--|
| ID360 Shimano / Sram Light freewheel body (V3850101)                      |  |
| ID360 XD-R freewheel body (V2580101)                                      |  |
| FTS-L Shimano / Sram freewheel body ([30871101] - Delivered on the wheel) |  |