

**MAVIC** *Cosmic Pro Carbon SL T Disc*

For a longer longevity of the wheel, Mavic recommends that the total weight supported by the wheels don't exceed 120kg, bike included

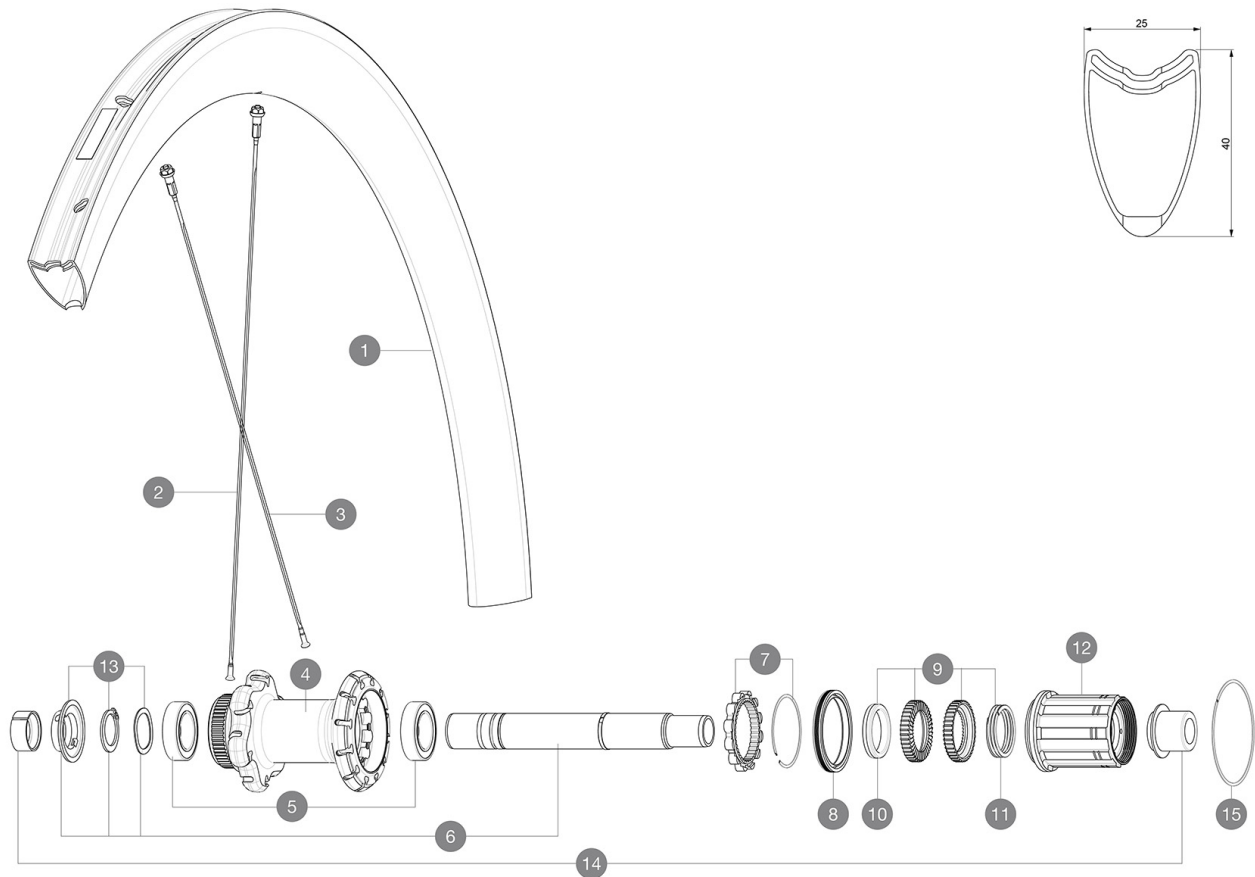
Recommended tyre sizes: 25 to 32 mm

Max. Pressure: see indication on wheel and tyre. If they differ, use the lower of the 2

Max. Pressure: 23mm 8.7 bars - 125 psi, 25/28mm 7.7 bars - 110 psi

**REFERENCES WHEELS**

R30091 CosProCarb SL T DCL 19 Rr

**RIMS**

&NBSP;:

**1** V2738313 KIT REAR RIM COSMIC PRO CARBON SL T Disc 19

**SPOKES**

**2** V3667301 KIT 12 FRT BUTTED AERO STAINLESS SPOKE 279 + alu nipple + wa  
**2** V3667201 KIT 2 FRT/NDS 279 STAMPED BUTTED AERO STAINLESS SPOKE COSMIC  
**3** V3663901 KIT 12 NON DRIVE SIDE BUTTED AERO STAINLESS SPOKE 261 + alu

**HUB SHELLS**

**4** N/A HUB BODY  
**5** V2560401 KIT 2 BEARINGS 17x28x7 + WAVED WASHER + CLIP  
**6** V2373401 KIT ID360 135/142 DCL L1 AXLE WITH CLIP  
**7** V2252701 KIT ID360 INSERT SHAPED EAR LOBE > 2017  
**8** V2251601 KIT ID360 SEAL + GREASE  
**9** V2251701 KIT ID360 2 RATCHETS + SPRING + GREASE  
**10** V2500501 KIT ID360 3 PADS NOISE REDUCING  
**11** V2251801 KIT 3 ID360 ROAD SPRINGS  
**12** V3430101 HG11 Freewheel Body ID360  
**13** V2560501 KIT ADJUST. SYSTEM QRM AUTO ID360 for 17x28x7 bearing  
**15** V2252201 KIT 2 REAR HUB RETENTION RINGS 48mm

**ADAPTERS**

**14** V2510701 ID360V2RrAxleAdapt12x142/148  
 V2510901 ID360 EVO RrAxleAdpt12x135/150  
 V2510801 ID360 V2 RrAxleAdapt9x135

# MAVIC Cosmic Pro Carbon SL T Disc

## DELIVERED WITH

Front QR adapters (996 941 01 for MTB or B41 043 01 for road)	
Front QR adapters (996 941 01 for MTB or B41 043 01 for road)	
Rear QR adapters for Instant Drive 360 (B49 894 01)	
Rear QR adapters for Instant Drive 360 (B49 894 01)	
User guide	
User guide	

## COMPATIBILITY

Freewheel: Shimano/Sram, convertible to Campagnolo and XD-R with optional driver bodies	
Freewheel: Shimano/Sram, convertible to Campagnolo and XD-R with optional driver bodies	
Front axle: 12mm thru axle, easily convertible to quick release with included adapters. Convertible to 15mm with complete axle replacement	
Front axle: 12mm thru axle, easily convertible to quick release with included adapters. Convertible to 15mm with complete axle replacement	
Rear axle: 12mm thru axle, convertible to Quick Release with included adapters	
Rear axle: 12mm thru axle, convertible to Quick Release with included adapters	

## Specifications

### RIMS

- **Material** : 3K carbon fibers
  - **Material** : 3K carbon fibers
  - **Height** : 40 mm
  - **Height** : 40 mm
  - **Drilling** : traditional
  - **Drilling** : traditional
- Disc brake specific profile  
Disc brake specific profile
- **Valve hole diameter** : 6.5 mm
  - **Valve hole diameter** : 6.5 mm
  - **Tyre** : tubular
  - **Tyre** : tubular
  - **ETRTO size** : 28" tubular
  - **ETRTO size** : 28" tubular

### SPOKES

- **Material** : steel
- **Material** : steel
- **Shape** : straight pull, aero, double butted
- **Shape** : straight pull, aero, double butted
- **Nipples** : aluminum, ABS
- **Nipples** : aluminum, ABS
- **Count** : 24 front and rear
- **Count** : 24 front and rear
- **Lacing** : front crossed 2, rear Isopulse
- **Lacing** : front crossed 2, rear Isopulse

### WHEEL HUB

- **Front and rear bodies** : aluminum
  - **Front and rear bodies** : aluminum
  - **Axle material** : aluminum
  - **Axle material** : aluminum
- Auto adjust sealed cartridge bearings (QRM Auto), front and rear  
Auto adjust sealed cartridge bearings (QRM Auto), front and rear
- **Freewheel** : Instant Drive 360
  - **Freewheel** : Instant Drive 360
  - **Front** : Quick release, 12x100 and 15x100 through axle compatible
  - **Front** : Quick release, 12x100 and 15x100 through axle compatible
  - **Rear** : Quick Release, 12x142 and 12x135 compatible
  - **Rear** : Quick Release, 12x142 and 12x135 compatible

### VERSIONS

- **Color** : Black only
- **Disc standard** : Center Lock(R) only
- **Disc standard** : Center Lock(R) only

### WHEEL WEIGHTS

810