

MAVIC DEEMAX 29

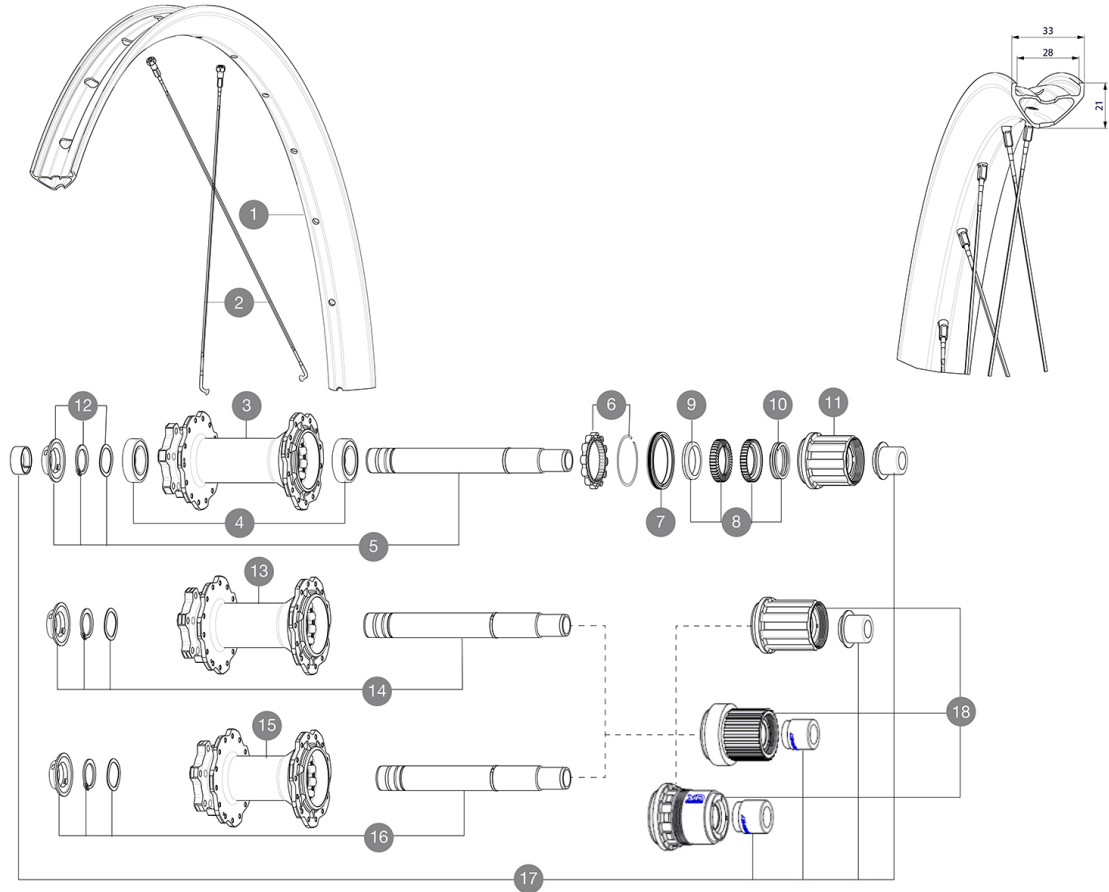
ASTM CATEGORY 5 : GRAVITY RIDING FOCUSED ON THE DESCENT

For a longer longevity of the wheel, Mavic recommends that the total weight supported by the wheels doesn't exceed 150kg, bike included

Maximum tyre pressure: 3.2bar/46PSI with a 47mm tyre - 2.85bar/41PSI with a 64mm tyre
Recommended tyre sizes: 60mm to 76mm (2.35" to 3.0")

REFERENCES WHEELS

R39541	DEEMAX INT 29 BST HG	R39571	Deemax 29 21 Rr 12x157 7s
R39551	DEEMAX INT 29 BST XD	R39581	DEEMAX INT 29 BST MS
R39561	DEEMAX INT 29 12X157 HG	R39591	DEEMAX INT 29 12X157 XD

**RIMS**

&NBSP;:

1	V3766215 V2640101	Kit Front/Rear rim Deemax 21 29" UST RIM TAPE 32mm for 28 to 29mm wide rims
---	----------------------	--

SPOKES

2	V2387901	KIT 14 J BENT STEEL SPOKES 299mm DEEMAX DH 29" + black steel
---	----------	--

HUB SHELLS

3	N/A	HUB BODY
4	M40076	HUB BEARINGS 17x30x7 6903 x 2
5	V2374901	Kit ID360 150/157 D6T 7S 2AXLE WITH CIRCLIP
6	V2252701	KIT ID360 INSERT SHAPED EAR LOBE > 2017
7	V00063631	Kit ID360 seal version 2 (larger)
8	V2375201	KIT ID360 24 TEETH 2 RATCHET + MTB SPRING + PAD (specific)
9	V2375401	KIT ID360 MTB 24T 3 NOISE REDUCING PADS
10	V2372901	KIT 3 ID360 MTB SPRINGS
11	V2375001	Freehub Body ID360 7S Alu
12	V2373001	KIT ADJUST. SYSTEM QRM AUTO ID360 for 17x30x7 bearing
13	N/A	HUB BODY
14	V2374801	Kit ID360 150/157 D6T AXLE WITH CIRCLIP
15	N/A	HUB BODY
16	V2372201	KIT ID360 148 D6T AXLE WITH CLIP
18	V3740101	XD MTB Freewheel Body ID360

18	V3990101	MicroSpline MTB Freewheel Body ID360
18	V3780101	HG9 Alloy MTB Freewheel Body ID360

ADAPTERS

	V2510901	ID360 EVO RrAxleAdpt12x135/150
17	V2510701	ID360V2RrAxleAdapt12x142/148

MAVIC DEEMAX 29

DELIVERED WITH

UST valve and accessories (129 838 01)	
UST valve and accessories (129 838 01)	
Pre-installed tubeless rim tape	
Pre-installed tubeless rim tape	
Multifunction adjustment wrench (delivered with rear wheel) (325 423 01)	
Multifunction adjustment wrench (delivered with rear wheel) (325 423 01)	
2 replacement spokes with each wheel	
2 replacement spokes with each wheel	
20X110mm boost adapters delivered with front Boost wheel	
20X110mm NON-boost adapters delivered with NON boost front wheel	
12X150 adapters delivered with 12X157 rear wheel	
20X110mm boost adapters delivered with front Boost wheel	
20X110mm NON-boost adapters delivered with NON boost front wheel	
12X150 adapters delivered with 12X157 rear wheel	

COMPATIBILITY

Front axle: 15x110 Boost, convertible to 20x110 Boost thru axle with adapters	
Front axle: 15x110 Boost, convertible to 20x110 Boost thru axle with adapters	
Freewheel: Shimano HG9, XD or Micro Spline	
Boost Axles : 15X110 ; 12X148	
Boost Axles : 15X110 ; 12X148	
DH spacing axles: 12X150 , 12x157 , 12X157-7speed	
DH spacing axles: 12X150 , 12x157 , 12X157-7speed	
Freewheel: Shimano HG9, XD or Micro Spline	

Specifications

RIMS

- **Material** : Mxstal
- **Material** : Mxstal
- **Material** : S6000 Aluminum
- **Material** : S6000 Aluminum
- SUP
- **Drilling** : traditional
- **Drilling** : traditional
- **Internal width** : 28 mm
- **Internal width** : 28 mm
- **ETRTO size 29"** : 622x28TC
- **ETRTO size 27.5"** : 584x28TC
- **ETRTO size 29"** : 622x28TC
- Black Shield treatment (protects your rim against impacts and scratches)
- Black Shield treatment (protects your rim against

WHEEL HUB

- Instant Drive 360
- QRM Auto
- **DH spacing axles** : 12X150 , 12x157 , 12X157-7speed available
- Hub available with 6-bolt brake rotors
- **Axles** : Front 15X110 Boost ; Rear 12X148 Boost
- **DH spacing axles** : 12X150 , 12x157 , 12X157-7speed available
- Hub available with 6-bolt brake rotors
- **Axles** : Front 15X110 Boost ; Rear 12X148 Boost
- 24 teeth ratchet
- Instant Drive 360
- QRM Auto

VERSIONS

WHEEL WEIGHTS

- Weight Rear 27.5": 1055
- Weight Rear 29": 1105