

# MAVIC E-SPEEDCITY 1 700

1  
2023  
FRONT

## RÉFÉRENCES ROUES

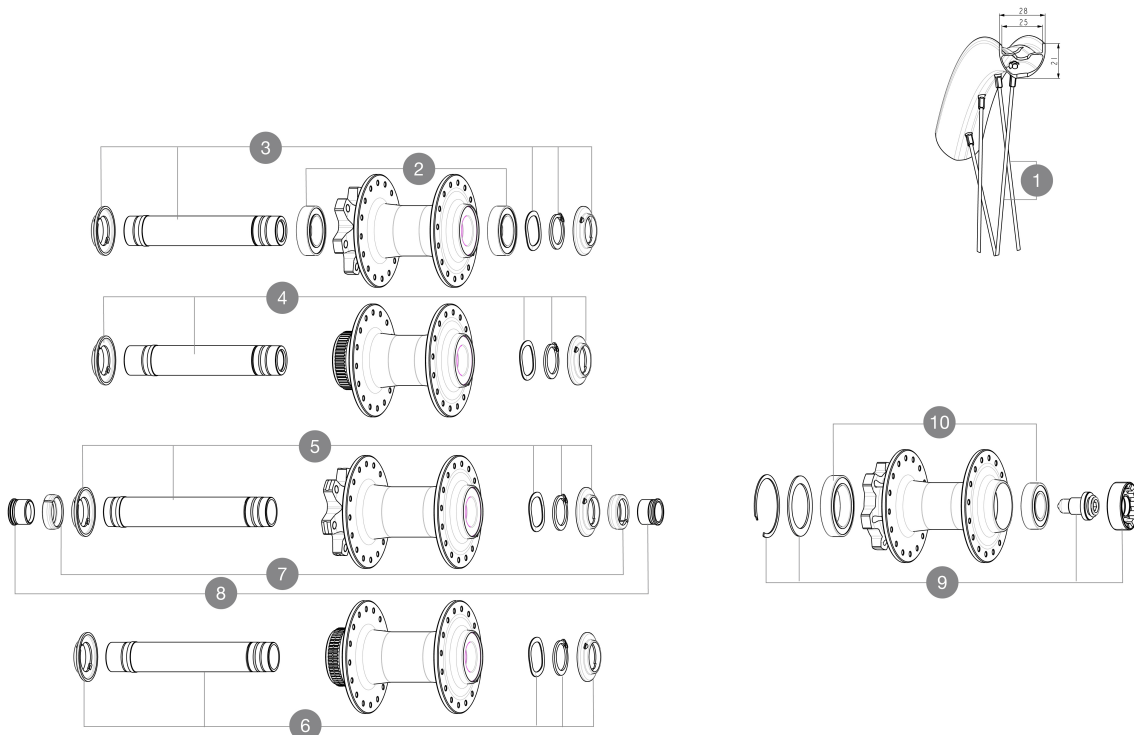
ASTM CATEGORY 2 : road and offroad with jumps less than 15cm

Axe avant : axe traversant de 15 mm convertible en blocage rapide au moyen des adaptateurs fournis

Recommended tire sizes: 28 to 64 mm (1.1" to 2.5")

Boost : Adaptateurs Torque Cap (V2374401)

For a longer longevity of the wheel, Mavic recommends that the total weight supported by the wheels doesn't exceed 180kg, E-bike included



### RAYONS

1 V00062431 Kit 16 ft/r Jbent bk rd spk 293 29"+np

### MOYEUX

2 V2500901 KIT BEARINGS 18x30x7 + WAVED WASHER + CLIP  
3 V2375501 Kit QRM auto front axle 100x12/15mm D6T  
4 V2374001 KIT 12x100mm FRONT AXLE DCL QRM AUTO ALLROAD > 2019  
5 V2372401 KIT 110mm AXLE QRM AUTO MTB > 2019  
6 V2375601 Kit 110mm axle QRM auto MTB from 2019 DCL  
9 36709301 ASSEMBLY KIT CROSSROC SUPERMAX  
10 M40771 KIT ROULEMENT pour MOYEU LEFTY

### ADAPTATEURS

7 V2372501 15mm MTB Axle Cap QRM Auto From 2019  
8 V2680201 12mm Ft Road Axle Adapters QRM  
V2680301 Kit Ft Road Adapter 12 >> 9mm  
99694101 2 REDUCTEURS 15/9mm

