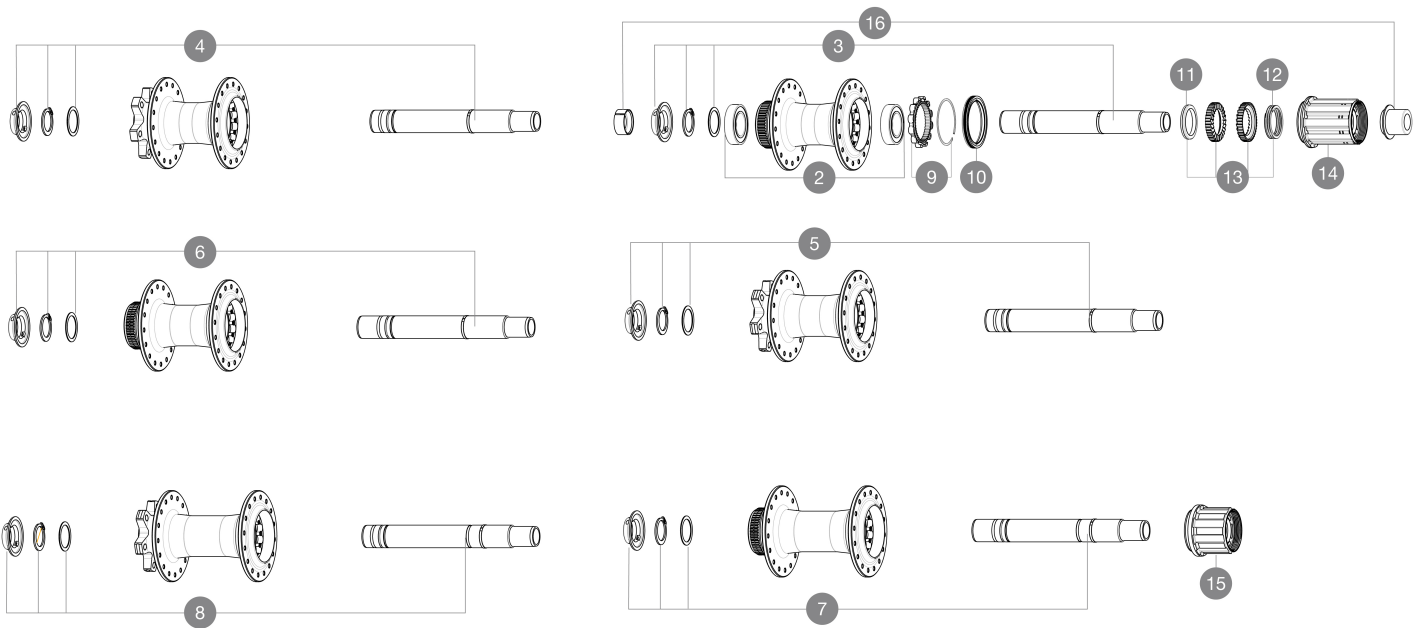
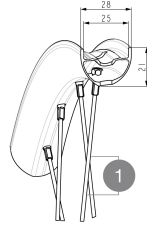


ASTM CATEGORY 2 : road and offroad with jumps less than 15cm
 Front axle: convertible from 15mm thru axle to Quick Release with included adapters
 Recommended tire sizes: 28 to 64 mm (1.1" to 2.5")
 Boost : Torque Caps for Center Lock hub (V2374401)
 For a longer longevity of the wheel, Mavic recommends that the total weight supported by the wheels doesn't exceed 180kg, E-bike included

REFERENCES WHEELS



SPOKES

1	V00062431	Kit 16 ft/rr Jbent bk rd spk 293 29"+np
---	-----------	---

HUB SHELLS

2	M40076	HUB BEARINGS 17x30x7 6903 x 2
4	V2372101	KIT ID360 135/142 D6T AXLE WITH CLIP
	V2372201	KIT ID360 148 D6T AXLE WITH CLIP
6	V2375701	Kit ID360 148 DCL axle with circlip
7	V2373401	KIT ID360 135/142 DCL L1 AXLE WITH CLIP
9	V2252701	KIT ID360 INSERT SHAPED EAR LOBE > 2017
10	V00063631	Kit ID360 seal version 2 (larger)
11	V2375401	KIT ID360 MTB 24T 3 NOISE REDUCING PADS
12	V2372901	KIT 3 ID360 MTB SPRINGS
13	V2375201	KIT ID360 24 TEETH 2 RATCHET + MTB SPRING + PAD (specific)
14	V3430101	HG11 Freewheel Body ID360

OPTIONS

V2373001	KIT ADJUST. SYSTEM QRM AUTO ID360 for 17x30x7 bearing
----------	---

ADAPTERS

16	V2510701	ID360V2RrAxleAdapt12x142/148
	V2510801	ID360 V2 RrAxleAdapt9x135
	V2510901	ID360 EVO RrAxleAdpt12x135/150

MAVIC E-SPEEDCITY 1 700**DELIVERED WITH**

User guide	
User guide	
Rear QR adapters (non-boost wheel)	
Rim tape	
Rear QR adapters (non-boost wheel)	
Rear QR adapters (non-boost wheel)	
User guide	
User guide	
Rim tape	
Rim tape	

COMPATIBILITY

Freewheel: Shimano/Sram, convertible to Campagnolo ED11, N3W and XD-R with optional driver bodies	
Front axle: 12mm thru axle, easily convertible to quick release with optional adapters. Convertible to 15mm with complete axle replacement	
Rear axle: 12mm thru axle, convertible to Quick Release with optional adapters and axle replacement	
Freewheel body: convertible SRAM XD road (kit V2580101 sold separately)	
Freewheel body: convertible SRAM XD road (kit V2580101 sold separately)	
Freewheel body: convertible SRAM XD road (kit V2580101 sold separately)	
Freewheel body: convertible SHIMANO HG light road (kit V3850101 sold separately)	
Freewheel body: convertible SHIMANO HG light road (kit V3850101 sold separately)	
Freewheel body: convertible SHIMANO HG light road (kit V3850101 sold separately)	
Freewheel body: convertible SHIMANO MS (kit V3990101 sold separately)	
Freewheel body: convertible SHIMANO MS (kit V3990101 sold separately)	
Freewheel body: convertible SHIMANO MS (kit V3990101 sold separately)	
Front axle: 12mm thru axle, easily convertible to quick release with optional adapters. Convertible to 15mm with complete axle replacement	
Front axle: 12mm thru axle, easily convertible to quick release with optional adapters. Convertible to 15mm with complete axle replacement	
Front axle: 12mm thru axle, easily convertible to quick release with optional adapters. Convertible to 15mm with complete axle replacement	
Freewheel body: convertible CAMPAGNOLO N3W (kit V4270101 sold separately)	
Freewheel body: convertible CAMPAGNOLO N3W (kit V4270101 sold separately)	
Freewheel body: convertible CAMPAGNOLO N3W (kit V4270101 sold separately)	