

ASTM CATEGORY 2 : road and offroad with jumps less than 15cm

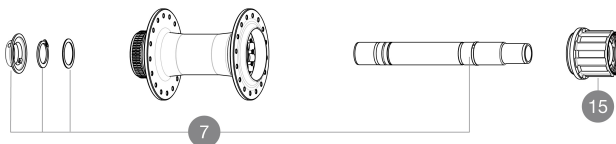
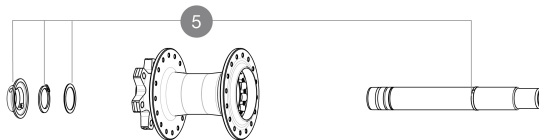
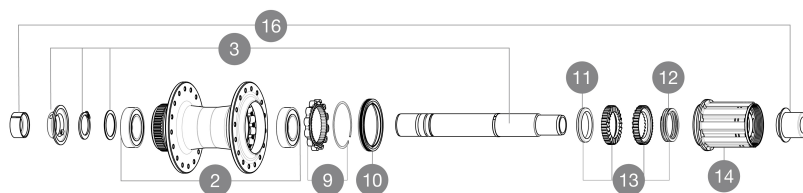
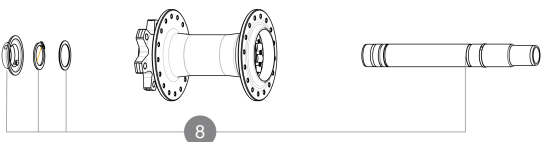
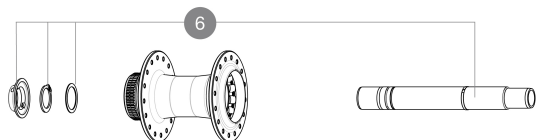
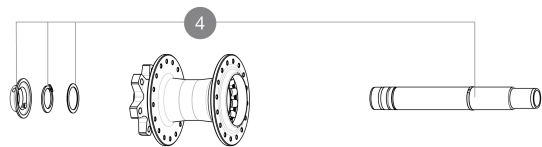
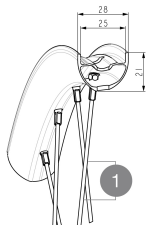
Perno anteriore: convertibile da perno passante da 15 mm in un sistema a bloccaggio rapido con adattatori inclusi

Recommended tire sizes: 28 to 64 mm (1.1" to 2.5")

Boost: Torque Caps (V2374401)

For a longer longevity of the wheel, Mavic recommends that the total weight supported by the wheels doesn't exceed 180kg, E-bike included

REFERENZE RUOTE



SPOKES

1 V00062431 Kit 16 ft/rr Jbent bk rd spk 293 29"+np

HUB SHELLS

2	M40076	HUB BEARINGS 17x30x7 6903 x 2
4	V2372101	KIT ID360 135/142 D6T AXLE WITH CLIP
	V2372201	KIT ID360 148 D6T AXLE WITH CLIP
6	V2375701	Kit ID360 148 DCL axle with circlip
7	V2373401	KIT ID360 135/142 DCL L1 AXLE WITH CLIP
9	V2252701	KIT ID360 INSERT SHAPED EAR LOBE > 2017
10	V00063631	Kit ID360 seal version 2 (larger)
11	V2375401	KIT ID360 MTB 24T 3 NOISE REDUCING PADS
12	V2372901	KIT 3 ID360 MTB SPRINGS
13	V2375201	KIT ID360 24 TEETH 2 RATCHET + MTB SPRING + PAD (specific)
14	V3430101	HG11 Freewheel Body ID360

OPTIONS

V2373001 KIT ADJUST. SYSTEM QRM AUTO ID360 for 17x30x7 bearing

ADAPTERS

16	V2510701	ID360 EVO REAR AXLE ADAPTERS 12x142mm DCL & D6T
	V2510801	ID360 EVO REAR AXLE ADAPTERS 9x135mm DCL & D6T
	V2510901	ID360 EVO REAR AXLE ADAPTERS 12x135mm DCL & D6T

MAVIC **E-SPEEDCITY 1 700****VENDUTO CON**

User guide	
User guide	
User guide	
Rondella per cassetta M9 non montata sulla ruota posteriore	
Rondella per cassetta M9 non montata sulla ruota posteriore	
Rondella per cassetta M9 non montata sulla ruota posteriore	
Flap	
Rondella per cassetta M9 non montata sulla ruota posteriore	
User guide	
User guide	
Flap	
Flap	
Flap	

COMPATIBILITY

Freewheel: Shimano/Sram, convertible to Campagnolo ED11, N3W and XD-R with optional driver bodies	
Front axle: 12mm thru axle, easily convertible to quick release with optional adapters. Convertible to 15mm with complete axle replacement	
Corpo ruota libera: convertibile SRAM XD strada (kit V2580101 venduto separatamente)	
Corpo ruota libera: convertibile SRAM XD strada (kit V2580101 venduto separatamente)	
Corpo ruota libera: convertibile SRAM XD strada (kit V2580101 venduto separatamente)	
Corpo ruota libera: convertibile SRAM XD strada (kit V2580101 venduto separatamente)	
Rear axle: 12mm thru axle, convertible to Quick Release with optional adapters and axle replacement	
Corpo ruota libera: convertibile SHIMANO HG light strada (kit V3850101 venduto separatamente)	
Corpo ruota libera: convertibile SHIMANO HG light strada (kit V3850101 venduto separatamente)	
Corpo ruota libera: convertibile SHIMANO HG light strada (kit V3850101 venduto separatamente)	
Corpo ruota libera: convertibile SHIMANO HG light strada (kit V3850101 venduto separatamente)	
Corpo ruota libera: convertibile SHIMANO MS (kit V3990101 venduto separatamente)	
Corpo ruota libera: convertibile SHIMANO MS (kit V3990101 venduto separatamente)	
Corpo ruota libera: convertibile SHIMANO MS (kit V3990101 venduto separatamente)	
Corpo ruota libera: convertibile SHIMANO MS (kit V3990101 venduto separatamente)	
Front axle: 12mm thru axle, easily convertible to quick release with optional adapters. Convertible to 15mm with complete axle replacement	
Front axle: 12mm thru axle, easily convertible to quick release with optional adapters. Convertible to 15mm with complete axle replacement	
Front axle: 12mm thru axle, easily convertible to quick release with optional adapters. Convertible to 15mm with complete axle replacement	