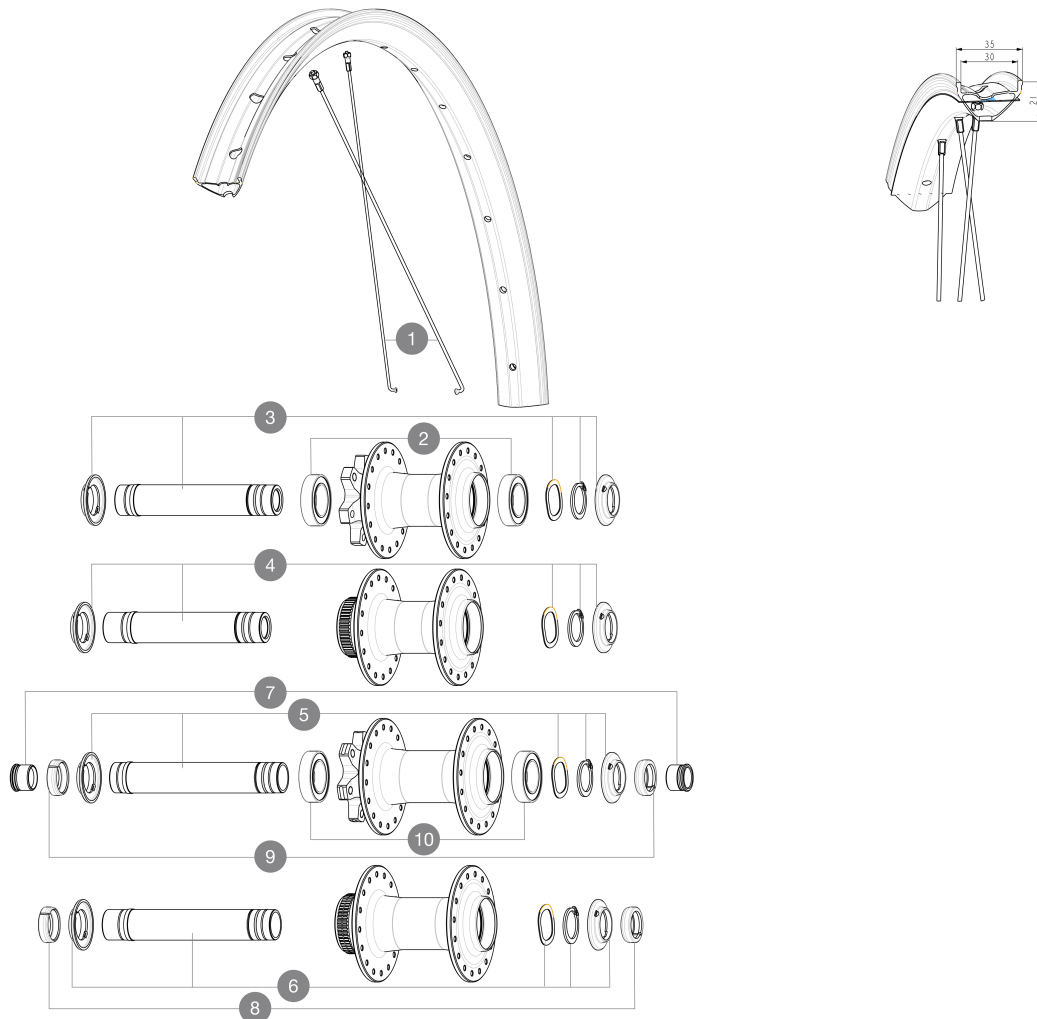


ASTM CATEGORY 2 : road and offroad with jumps less than 15cm
Minimum tyre size: width 52mm - pressure max. 2.35Bar/34PSI
Recommended tyre sizes: 50mm to 76mm (2.0" to 3.0")
Maximum tyre size: width 125mm - pressure max. 1.25Bar/18PSI
For a longer longevity of the wheel, Mavic recommends that the total weight supported by the wheels doesn't exceed 180kg, E-bike included

REFERENCES WHEELS



SPOKES

1	V00062531	Kit 16ft/rr Jbent bk rd spk275 27,5"+np
---	-----------	---

HUB SHELLS

	V2500901	KIT BEARINGS 18x30x7 + WAVED WASHER + CLIP
3	V2375501	Kit QRM auto front axle 100x12/15mm D6T
4	V2374001	KIT 12x100mm FRONT AXLE DCL QRM AUTO ALLROAD > 2019
5	V2372401	KIT 110mm AXLE QRM AUTO MTB > 2019
6	V2375601	Kit 110mm axle QRM auto MTB from 2019 DCL

ADAPTERS

7	V2680201	12mmFtRoadAxleAdaptersQRM
8	V2680501	12mm Road Axle Cap QRM Auto
9	V2372501	15mm MTB Axle Cap QRM Auto From 2019
	99694101	ADAPTER Ft 15 to 9mm QR
	V2680301	"Kit Ft Road Adapter 12 >> 9mm"

MAVIC

E-SPEEDCITY 1 650B

DELIVERED WITH

Pre-installed tubeless rim tape	
Rear QR adapters (non-boost wheel)	
User guide	
User guide	

COMPATIBILITY

Freewheel: Shimano/Sram, convertible to Campagnolo ED11, N3W and XD-R with optional driver bodies	
Front axle: 12mm thru axle, easily convertible to quick release with optional adapters. Convertible to 15mm with complete axle replacement	
Freewheel body: convertible SRAM XD road (kit V2580101 sold separately)	
Rear axle: 12mm thru axle, convertible to Quick Release with optional adapters and axle replacement	
Freewheel body: convertible SHIMANO HG light road (kit V3850101 sold separately)	
Freewheel body: convertible SHIMANO MS (kit V3990101 sold separately)	
Front axle: 12mm thru axle, easily convertible to quick release with optional adapters. Convertible to 15mm with complete axle replacement	
Freewheel body: convertible CAMPAGNOLO N3W (kit V4270101 sold separately)	
Rear axle: for fixing nuts only (included), M9x1 thread	
ID360 Shimano Micro Spline alloy freewheel body (V3990101))	
Rear axle: 12mm thru axle, convertible to Quick Release with adapters (delivered with non-boost wheel)	
ID360 Sram XD freewheel body (V3740101))	

Specifications

RIMS

- **Material** : S6000 Aluminum
- **Material** : S6000 Aluminum
- **Height** : 21 mm
- **Height** : 21 mm
- **Joint** : sleeved
- **Joint** : sleeved
- **Drilling** : traditional
- Disc brake specific profile
- **Internal width** : 30 mm
- E-Bike specific rim profile
- **Valve hole diameter** : 6.5 mm
- **Tire** : UST Tubeless and tubetype
- **Drilling** : traditional (front/rear 32 holes)
- **Internal width** : 30 mm

- Disc brake specific profile
- E-Bike specific rim profile
- Black Shield treatment (protects your rim against impacts and scratches)
- Hookless profile
- Pinch Flat Protection sidewall (minimizes the risk of tire cuts and punctures)
- **ETRTO size** 27.5" : 584x30TC
- **Tire** : clincher

WHEEL HUB

- **Body** : aluminum
- **Front and rear bodies** : aluminum
- **Axle material** : aluminum
- Instant Drive 360 freewheel technology
- QRM Auto bearing preload technology
- **Front** : Quick release, 12x100 and 15x100 through axle compatible
- **Rear** : Quick Release, 12x142 and 12x135 compatible
- Hub available for Center Lock brake rotors only
- **Body design** : CLASSIC
- **Disc standard** : 6 Bolts or Center LockÂ®
- **Axle material** : aluminum
- **Axle size** : front 12x100 / rear 12x142 -
- Convertible to quick release with included adapters
- **Axles** : Front 15X110 (Boost) or 15x100 ; Rear 12X148 (Boost) or 12x142
- **Freewheel** : Shimano HG road
- **Freewheel** : FTS-L steel

VERSIONS

- **Disc standard** : Center LockÂ® only
- **Freewheel** : Shimano/Sram

WHEEL WEIGHTS

1014