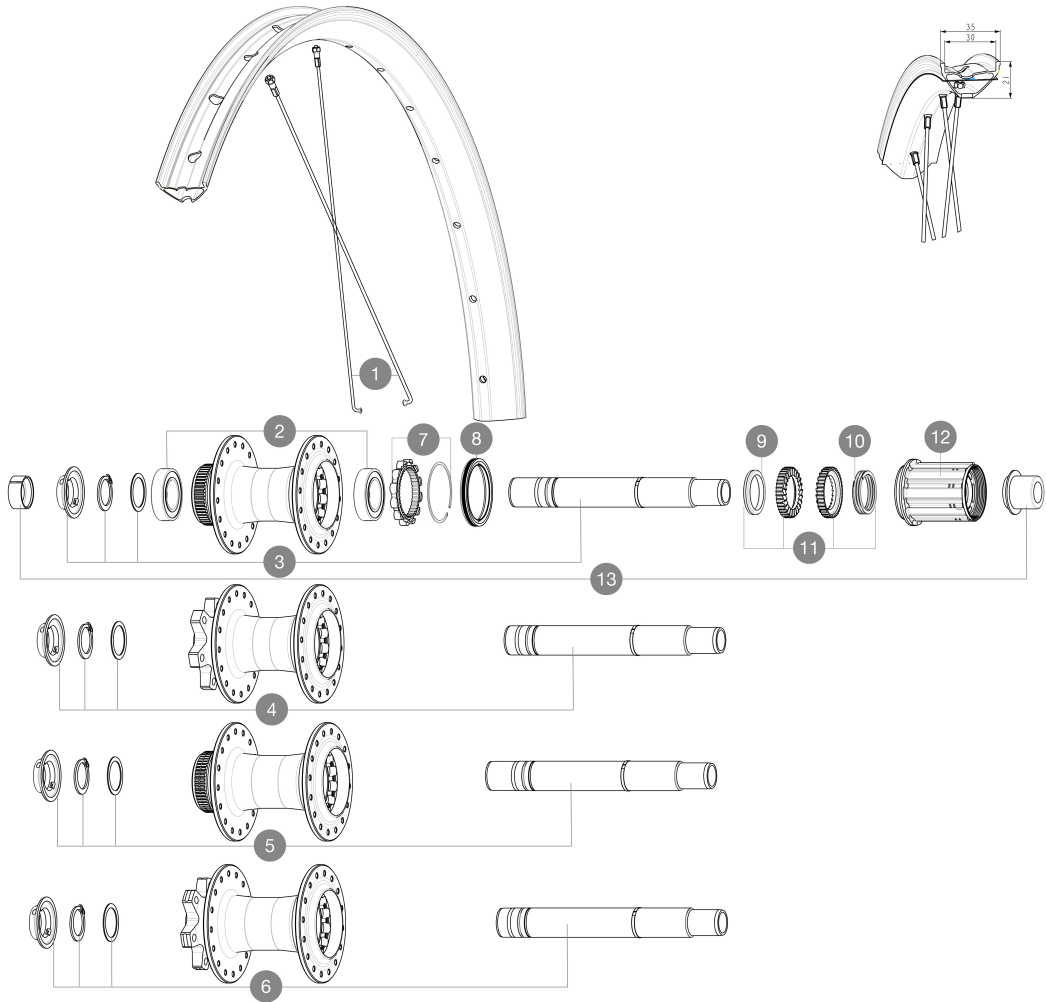


REFERENCES WHEELS

ASTM CATEGORY 2 : road and offroad with jumps less than 15cm
Minimum tyre size: width 52mm - pressure max. 2.35Bar/34PSI
Recommended tyre sizes: 50mm to 76mm (2.0" to 3.0")
Maximum tyre size: width 125mm - pressure max. 1.25Bar/18PSI
For a longer longevity of the wheel, Mavic recommends that the total weight supported by the wheels doesn't exceed 180kg, E-bike included



SPOKES

| | | |
|---|-----------|-----------------------------------------|
| 1 | V00062531 | Kit 16ft/rr Jbent bk rd spk275 27,5"+np |
|---|-----------|-----------------------------------------|

HUB SHELLS

| | | |
|----|-----------|------------------------------------------------------------|
| 2 | M40076 | HUB BEARINGS 17x30x7 6903 x 2 |
| 3 | V2373401 | KIT ID360 135/142 DCL L1 AXLE WITH CLIP |
| 4 | V2372101 | KIT ID360 135/142 D6T AXLE WITH CLIP |
| 5 | V2375701 | Kit ID360 148 DCL axle with circlip |
| 6 | V2372201 | KIT ID360 148 D6T AXLE WITH CLIP |
| 7 | V2252701 | KIT ID360 INSERT SHAPED EAR LOBE > 2017 |
| 8 | V00063631 | Kit ID360 seal version 2 (larger) |
| 9 | V2375401 | KIT ID360 MTB 24T 3 NOISE REDUCING PADS |
| 10 | V2372901 | KIT 3 ID360 MTB SPRINGS |
| 11 | V2375201 | KIT ID360 24 TEETH 2 RATCHET + MTB SPRING + PAD (specific) |
| 12 | V3430101 | HG11 Freewheel Body ID360 |

OPTIONS

| | |
|----------|-------------------------------------------------------|
| V2373001 | KIT ADJUST. SYSTEM QRM AUTO ID360 for 17x30x7 bearing |
|----------|-------------------------------------------------------|

ADAPTERS

| | | |
|----|----------|--------------------------------|
| 13 | V2510701 | ID360V2RrAxleAdapt12x142/148 |
| | V2510801 | ID360 V2 RrAxleAdapt9x135 |
| | V2510901 | ID360 EVO RrAxleAdpt12x135/150 |

DELIVERED WITH

| | |
|------------------------------------|--|
| Pre-installed tubeless rim tape | |
| Rear QR adapters (non-boost wheel) | |
| User guide | |
| User guide | |

COMPATIBILITY

| | |
|--------------------------------------------------------------------------------------------------------------------------------------------|--|
| Freewheel: Shimano/Sram, convertible to Campagnolo ED11, N3W and XD-R with optional driver bodies | |
| Front axle: 12mm thru axle, easily convertible to quick release with optional adapters. Convertible to 15mm with complete axle replacement | |
| Freewheel body: convertible SRAM XD road (kit V2580101 sold separately) | |
| Rear axle: 12mm thru axle, convertible to Quick Release with optional adapters and axle replacement | |
| Freewheel body: convertible SHIMANO HG light road (kit V3850101 sold separately) | |
| Freewheel body: convertible SHIMANO MS (kit V3990101 sold separately) | |
| Front axle: 12mm thru axle, easily convertible to quick release with optional adapters. Convertible to 15mm with complete axle replacement | |
| Freewheel body: convertible CAMPAGNOLO N3W (kit V4270101 sold separately) | |
| ID360 Shimano Micro Spline alloy freewheel body (V3990101) | |
| Rear axle: 12mm thru axle, convertible to Quick Release with adapters (delivered with non-boost wheel) | |
| ID360 Sram XD freewheel body (V3740101) | |
| Rear axle: for fixing nuts only (included), M9x1 thread | |

Specifications

RIMS

- **Material** : S6000 Aluminum
- **Material** : S6000 Aluminum
- **Height** : 21 mm
- **Height** : 21 mm
- **Joint** : sleeved
- **Joint** : sleeved
- **Drilling** : traditional
- Disc brake specific profile
- **Internal width** : 30 mm
- E-Bike specific rim profile
- **Valve hole diameter** : 6.5 mm
- **Tire** : UST Tubeless and tubetype
- **Drilling** : traditional (front/rear 32 holes)
- **Internal width** : 30 mm

Disc brake specific profile

E-Bike specific rim profile

Black Shield treatment (protects your rim against impacts and scratches)

Hookless profile

• **ETRTO size 27.5"** : 584x30TC

Pinch Flat Protection sidewall (minimizes the risk of tire cuts and punctures)

• **Tire** : clincher

WHEEL HUB

- **Body** : aluminum
- **Front and rear bodies** : aluminum
- **Axle material** : aluminum
- Instant Drive 360 freewheel technology
- QRM Auto bearing preload technology
- **Front** : Quick release, 12x100 and 15x100 through axle compatible
- **Rear** : Quick Release, 12x142 and 12x135 compatible
- Hub available for Center Lock brake rotors only
- **Body design** : CLASSIC
- **Disc standard** : 6 Bolts or Center LockÂ®
- **Axle material** : aluminum
- **Axle size** : front 12x100 / rear 12x142 -
- Convertible to quick release with included adapters
- **Axles** : Front 15X110 (Boost) or 15x100 ; Rear 12X148 (Boost) or 12x142
- **Freewheel** : Shimano HG road
- **Freewheel** : FTS-L steel

VERSIONS

- **Disc standard** : Center LockÂ® only
- **Freewheel** : Shimano/Sram

WHEEL WEIGHTS

1137