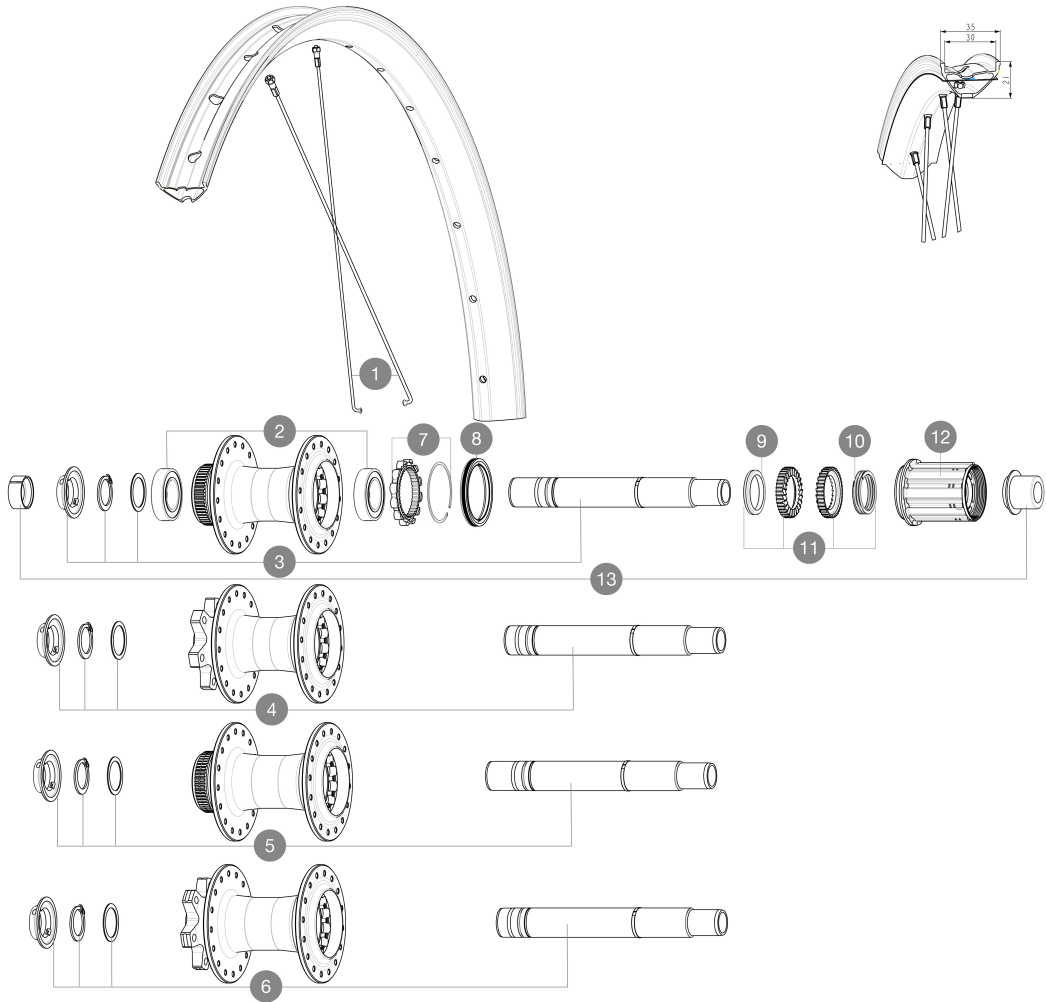


REFERENCES WHEELS

ASTM CATEGORY 2 : road and offroad with jumps less than 15cm
Minimum tyre size: width 52mm - pressure max. 2.35Bar/34PSI
Recommended tyre sizes: 50mm to 76mm (2.0" to 3.0")
Maximum tyre size: width 125mm - pressure max. 1.25Bar/18PSI
For a longer longevity of the wheel, Mavic recommends that the total weight supported by the wheels doesn't exceed 180kg, E-bike included



SPOKES

1	V00062531	Kit 16ft/rr Jbent bk rd spk275 27,5"+np
---	-----------	---

HUB SHELLS

2	M40076	HUB BEARINGS 17x30x7 6903 x 2
3	V2373401	KIT ID360 135/142 DCL L1 AXLE WITH CLIP
4	V2372101	KIT ID360 135/142 D6T AXLE WITH CLIP
5	V2375701	Kit ID360 148 DCL axle with circlip
6	V2372201	KIT ID360 148 D6T AXLE WITH CLIP
7	V2252701	KIT ID360 INSERT SHAPED EAR LOBE > 2017
8	V00063631	Kit ID360 seal version 2 (larger)
9	V2375401	KIT ID360 MTB 24T 3 NOISE REDUCING PADS
10	V2372901	KIT 3 ID360 MTB SPRINGS
11	V2375201	KIT ID360 24 TEETH 2 RATCHET + MTB SPRING + PAD (specific)
12	V3430101	HG11 Freewheel Body ID360

OPTIONS

V2373001	KIT ADJUST. SYSTEM QRM AUTO ID360 for 17x30x7 bearing
----------	---

ADAPTERS

13	V2510701	ID360V2RrAxleAdapt12x142/148
	V2510801	ID360 V2 RrAxleAdapt9x135
	V2510901	ID360 EVO RrAxleAdpt12x135/150

MAVIC

E-SPEEDCITY 1 650B

DELIVERED WITH

Pre-installed tubeless rim tape	
Rear QR adapters (non-boost wheel)	
User guide	
User guide	

COMPATIBILITY

Freewheel: Shimano/Sram, convertible to Campagnolo ED11, N3W and XD-R with optional driver bodies	
Front axle: 12mm thru axle, easily convertible to quick release with optional adapters. Convertible to 15mm with complete axle replacement	
Freewheel body: convertible SRAM XD road (kit V2580101 sold separately)	
Rear axle: 12mm thru axle, convertible to Quick Release with optional adapters and axle replacement	
Freewheel body: convertible SHIMANO HG light road (kit V3850101 sold separately)	
Freewheel body: convertible SHIMANO MS (kit V3990101 sold separately)	
Front axle: 12mm thru axle, easily convertible to quick release with optional adapters. Convertible to 15mm with complete axle replacement	
Freewheel body: convertible CAMPAGNOLO N3W (kit V4270101 sold separately)	
Rear axle: 12mm thru axle, convertible to Quick Release with adapters (delivered with non-boost wheel)	
ID360 Sram XD freewheel body (V3740101))	
Rear axle: for fixing nuts only (included), M9x1 thread	
ID360 Shimano Micro Spline alloy freewheel body (V3990101))	

Specifications

RIMS

- **Material** : S6000 Aluminum
 - **Material** : S6000 Aluminum
 - **Height** : 21 mm
 - **Height** : 21 mm
 - **Joint** : sleeved
 - **Joint** : sleeved
 - **Drilling** : traditional
- Disc brake specific profile
- **Internal width** : 30 mm
- E-Bike specific rim profile
- **Valve hole diameter** : 6.5 mm
 - **Tire** : UST Tubeless and tubetype
 - **Drilling** : traditional (front/rear 32 holes)

- Disc brake specific profile
- **Internal width** : 30 mm
- E-Bike specific rim profile
- Black Shield treatment (protects your rim against impacts and scratches)
- Hookless profile
- Pinch Flat Protection sidewall (minimizes the risk of tire cuts and punctures)
- **ETRTO size 27.5"** : 584x30TC
 - **Tire** : clincher

WHEEL HUB

- **Body** : aluminum
 - **Front and rear bodies** : aluminum
 - **Axle material** : aluminum
- Instant Drive 360 freewheel technology
- QRM Auto bearing preload technology
- **Front** : Quick release, 12x100 and 15x100 through axle compatible
 - **Rear** : Quick Release, 12x142 and 12x135 compatible
- Hub available for Center Lock brake rotors only
- **Body design** : CLASSIC
 - **Disc standard** : 6 Bolts or Center LockÂ®
 - **Axle material** : aluminum
 - **Axle size** : front 12x100 / rear 12x142 -
- Convertible to quick release with included adapters
- **Axles** : Front 15X110 (Boost) or 15x100 ; Rear 12X148 (Boost) or 12x142
 - **Freewheel** : Shimano HG road
 - **Freewheel** : FTS-L steel

VERSIONS

- **Disc standard** : Center LockÂ® only
- **Freewheel** : Shimano/Sram

WHEEL WEIGHTS

1137