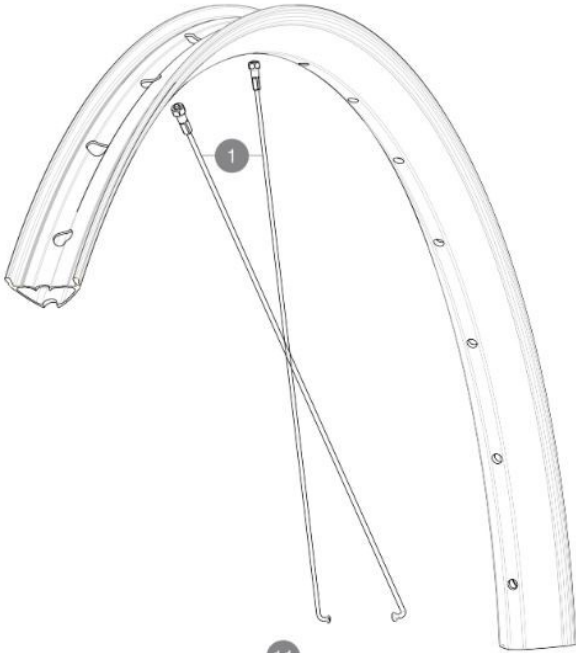


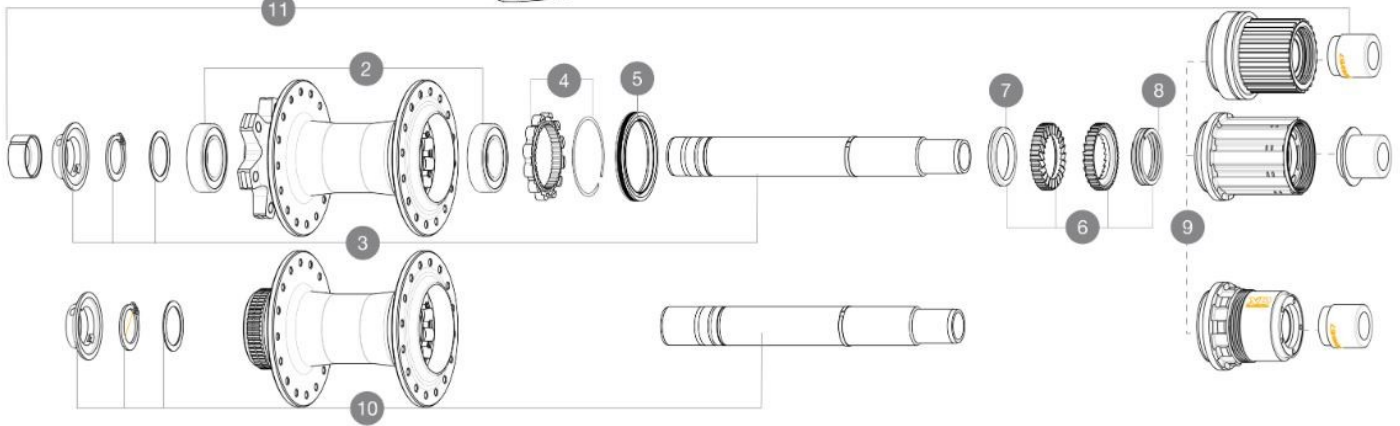
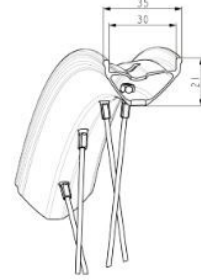
MAVIC E-CROSSRIDE 1 29

参照ホイール

ASTM E1000 1/4" x 3mm 29" x 1.25 Bar 18 PSI 125mm 34 PSI 2.35 Bar 52mm



| Specifications | Maxi target |
|-----------------------|---------------|
| Frontal run out | 0,5mm |
| Lateral run out | 0,5mm |
| Centrerig | 1,0mm (2x0,5) |
| Tension daN Disc side | 106 > 137 |



RIMS



&NBSP;:

V00094831 Kit Front/Rear rim eCrossride1 30mm 29"

SPOKES

1 V00062431 Kit 16 ft/rr Jbent bk rd spk 293 29"+np

HUB SHELLS

| | | |
|---|----------|--|
| 2 | M40076 | HUB BEARINGS 17x30x7 6903 x 2 |
| 3 | V2372201 | KIT ID360 148 D6T AXLE WITH CLIP |
| 4 | V2252701 | KIT ID360 INSERT SHAPED EAR LOBE > 2017 |
| 5 | V2373001 | KIT ADJUST. SYSTEM QRM AUTO ID360 for 17x30x7 bearing |
| 6 | V2375201 | KIT ID360 24 TEETH 2 RATCHET + MTB SPRING + PAD (specific) |
| 7 | V2375401 | KIT ID360 MTB 24T 3 NOISE REDUCING PADS |
| 8 | V2372901 | KIT 3 ID360 MTB SPRINGS |
| 9 | V3740101 | XD MTB Freewheel Body ID360 |
| 9 | V3990101 | MicroSpline MTB Freewheel Body ID360 |

| | | |
|----|-----------|-------------------------------------|
| 9 | V3780101 | HG9 Alloy MTB Freewheel Body ID360 |
| 10 | V2375701 | Kit ID360 148 DCL axle with circlip |
| | V00063631 | Kit ID360 seal version 2 (larger) |

OPTIONS

| | | |
|---|-----------|------------------------------------|
| 9 | A00090231 | FREEWHEEL BODY MS STMTB ID360 |
| 9 | V3790101 | HG9 Steel MTB Freewheel Body ID360 |

ADAPTERS

| | | |
|----|----------|---|
| 11 | V2510701 | ID360 EVO REAR AXLE ADAPTERS 12x142mm DCL & D6T |
| | V2510801 | ID360 EVO REAR AXLE ADAPTERS 9x135mm DCL & D6T |

