

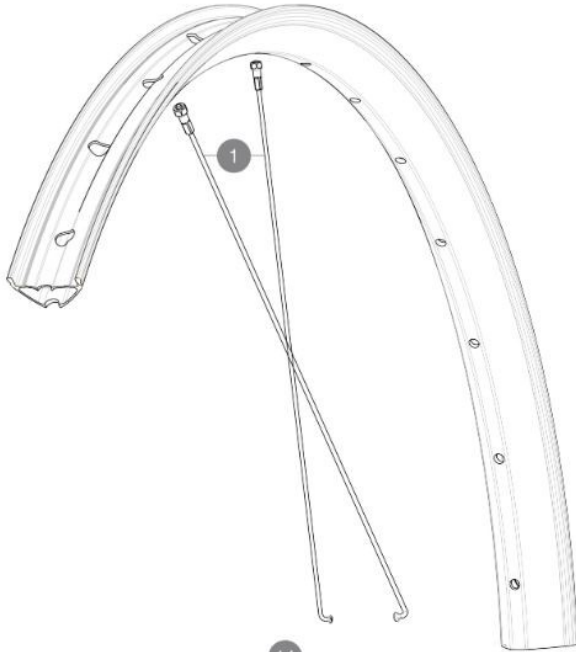
MAVIC **E-CROSSRIDE 1 29**

ASTM CATEGORY 3 : CROSS COUNTRY

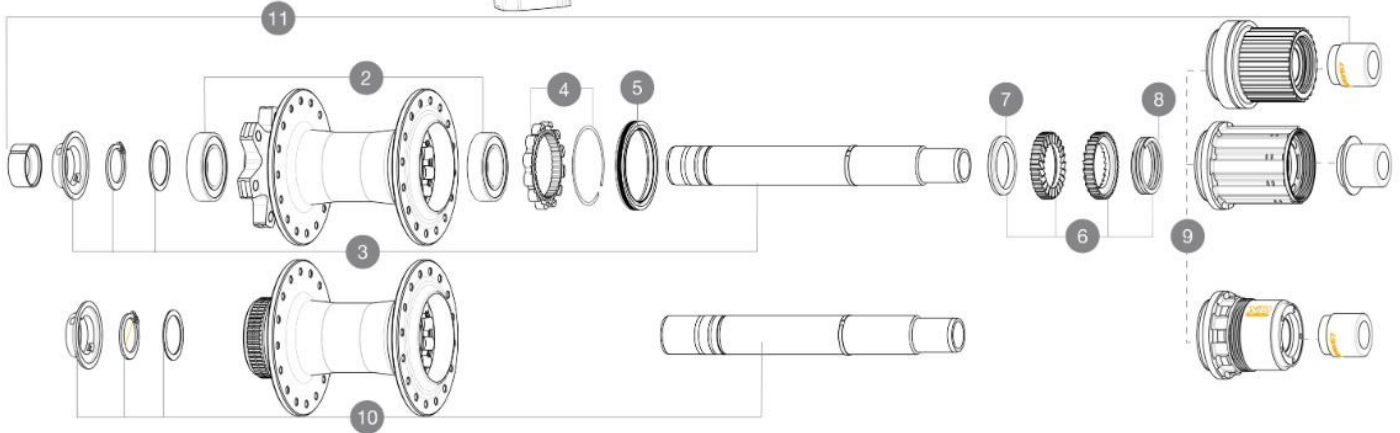
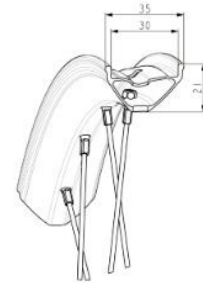
For a longer longevity of the wheel, Mavic recommends that the total weight supported by the wheels doesn't exceed 150kg, bike included

Minimum tyre size: width 52mm - pressure max. 2.35Bar/34PSI

Maximum tyre size: width 125mm - pressure max. 1.25Bar/18PSI

REFERENCES WHEELS

Specifications	Maxi target
Frontal run out	0,5mm
Lateral run out	0,5mm
Centring	1,0mm (2x0,5)
Tension daN Disc side	106 > 137

**RIMS**

&NBSP;:

V00094831 Kit Front/Rear rim eCrossride1 30mm 29"

V00063631 Kit ID360 seal version 2 (larger)

OPTIONS

9 A00090231 FREEWHEEL BODY MS STMTB ID360
9 V3790101 HG9 Steel MTB Freewheel Body ID360

SPOKES

1 V00062431 Kit 16 ft/rr Jbent bk rd spk 293 29"+np

ADAPTERS

11 V2510701 ID360V2RrAxleAdapt12x142/148
V2510801 ID360 V2 RrAxleAdapt9x135

HUB SHELLS

2 M40076 HUB BEARINGS 17x30x7 6903 x 2
3 V2372201 KIT ID360 148 D6T AXLE WITH CLIP
4 V2252701 KIT ID360 INSERT SHAPED EAR LOBE > 2017
5 V2373001 KIT ADJUST. SYSTEM QRM AUTO ID360 for 17x30x7 bearing
6 V2375201 KIT ID360 24 TEETH 2 RATCHET + MTB SPRING + PAD (specific)
7 V2375401 KIT ID360 MTB 24T 3 NOISE REDUCING PADS
8 V2372901 KIT 3 ID360 MTB SPRINGS
9 V3740101 XD MTB Freewheel Body ID360
9 V3990101 MicroSpline MTB Freewheel Body ID360
9 V3780101 HG9 Alloy MTB Freewheel Body ID360
10 V2375701 Kit ID360 148 DCL axle with circlip

MAVIC **E-CROSSRIDE 1 29****DELIVERED WITH**

User guide	
Pre-installed tubeless rim tape	
User guide	
Pre-installed tubeless rim tape	

COMPATIBILITY

Freewheel body: convertible SHIMANO HG MTB steel (kit V3790101 sold separately)	
Freewheel body: convertible SHIMANO HG MTB steel (kit V3790101 sold separately)	
Rear axle: 12mm thru axle, convertible to Quick Release with adapters (delivered with non-boost wheel)	

Specifications**RIMS**

- **Material** : S6000 Aluminum
- **Material** : S6000 Aluminum
- **Height** : 21 mm
- **Height** : 21 mm
- **Joint** : sleeved
- **Joint** : sleeved
- **Internal width** : 30 mm
- **Internal width** : 30 mm
- **Drilling** : traditional (front/rear 32 holes)
- **Drilling** : traditional (front/rear 32 holes)

Disc brake specific profile

Disc brake specific profile

E-Bike specific rim profile

E-Bike specific rim profile

- **ETRTO size 29"** : 622x30TSS

- **ETRTO size 29"** : 622x30TSS

- **Tire** : clincher

- **Tire** : clincher

SPOKES

- **Material** : steel

- **Material** : steel

- **Count** : 20 front and rear

- **Count** : 20 front and rear

- **Rear axle** : 12mm thru axle, convertible to Quick

Release with adapters (delivered with non-boost wheel)

12mm front hub cap (V2680501)

WHEEL HUB

- **Body** : aluminum

- **Body** : aluminum

- **Body design** : CLASSIC

- **Body design** : CLASSIC

- **Disc standard** : 6 Bolts or Center Lock[®]

- **Disc standard** : 6 Bolts or Center Lock[®]

- **Axle material** : aluminum

- **Axle material** : aluminum

- **Rear body** : aluminum

- **Rear body** : aluminum

- **Axles** : Front 15X110 (Boost) or 15x100 ; Rear

- 12X148 (Boost) or 12x142

- **Axles** : Front 15X110 (Boost) or 15x100 ; Rear

- 12X148 (Boost) or 12x142

- **Freewheel** : Shimano HG MTB / Shimano MS /

- Sram XD MTB / Single Speed

- **Freewheel** : Shimano HG MTB / Shimano MS /

- Sram XD MTB / Single Speed

- **Freewheel** : FTS-L steel

- **Freewheel** : FTS-L steel

WHEEL WEIGHTS