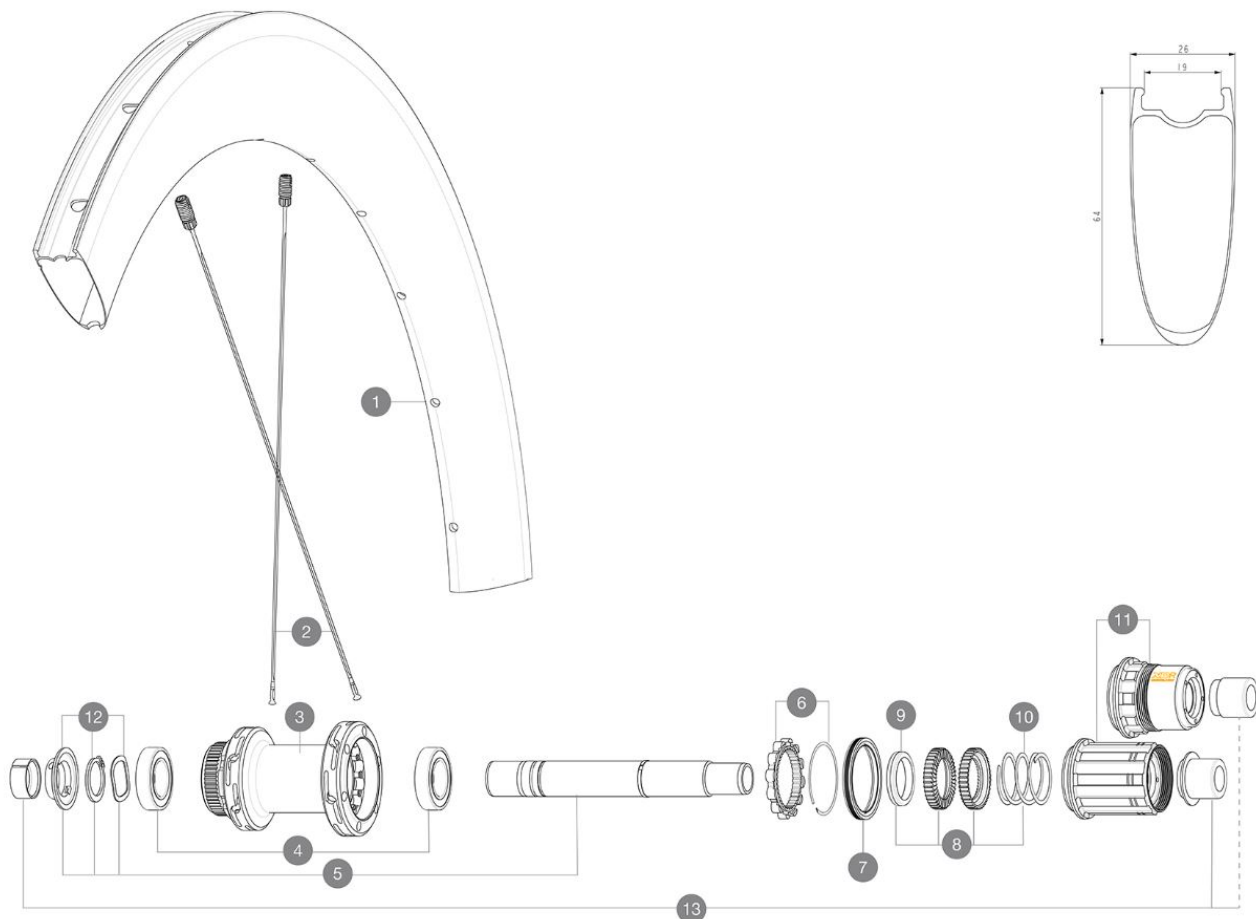


## 参照ホイール

ASTM CATEGORY 2 : road and offroad with jumps less than 15cm  
For a longer longevity of the wheel, Mavic recommends that the total weight supported by the wheels doesn't exceed 120kg, bike included  
Recommended tire sizes: 25 to 32 mm  
Max. Pressure: see indication on wheel and tire. If they differ, use the lowest of the 2



## RIMS



&NBSP;:

1	V00062731	Kit Front/Rear rim Cosmic SL65 Ltd
	V2620101	UST RIM TAPE 25mm (for 21-24mm wide rim)

## SPOKES

2	V4163301	Kit 12 Front/Rear Cosmic SL 65 Disc butted stainless spoke 2
---	----------	--

## HUB SHELLS

3	N/A	HUB BODY
4	M40076	HUB BEARINGS 17x30x7 6903 x 2
5	V2373401	KIT ID360 135/142 DCL L1 AXLE WITH CLIP
6	V2252701	KIT ID360 INSERT SHAPED EAR LOBE > 2017
7	V00063631	Kit ID360 seal version 2 (larger)
8	V2251701	ID360 2 RATCHETS + SPRING + GREASE
9	V2500501	Kit 3 ID360 pad for noise reduction
10	V2251801	KIT 3 ID360 ROAD SPRINGS
11	V2580101	FREEHUB BODY XD Road ID360
11	V3430101	HG11 Freewheel Body ID360
12	V2373001	KIT ADJUST. SYSTEM QRM AUTO ID360 for 17x30x7 bearing

## ADAPTERS

13	V2510701	ID360 EVO REAR AXLE ADAPTERS 12x142mm DCL & D6T
	V2510801	ID360 EVO REAR AXLE ADAPTERS 9x135mm DCL & D6T
	V2510901	ID360 EVO REAR AXLE ADAPTERS 12x135mm DCL & D6T



# COSMIC SL 65 LTD

付属品

Front QR adapters	
Rear QR adapters for Instant Drive 360 (B49 894 01)	
UST valve and accessories (129 838 01)	
Pre-installed tubeless rim tape	
User guide	

COMPATIBILITY

Freewheel: Shimano/Sram, convertible to Campagnolo ED11, N3W and XD-R with optional driver bodies	
Front axle: 12x100 thru axle, easily convertible to quick release with included adapters. Not compatible with 15mm through axles.	
Rear axle: 12mm thru axle, convertible to Quick Release with included adapters	

Specifications

リム

- Material : 100% carbon fiber
- Height : 64mm
- Drilling : traditional
- Disc brake specific profile
- Tire : UST Tubeless and tubetype
- Internal width : 19 mm
- ETRTO size : 622x19TC
- UST tubeless technology

スポーク

- Material : steel
- Shape : straight pull, flat, double butted
- Nipples : brass, ABS
- Count : 24 front and rear
- Lacing : front and rear crossed 2, contactless

ホイールハブ

- Front and rear bodies : aluminum
- Axle material : aluminum
- Front : Quick release and 12x100 through axle compatible
- Rear : Quick Release, 12x142 and 12x135 compatible
- Infinity hubs
- ã□□ã□□ã□□ã□»ã□²ã□¿ã□¼ã□□ã□□
- ã□¿ã□²ã□□ã□@ã□□ã□²ã□¼ã□ã□-
- ã□¼ã□¿ã□¼ã□@ã□¿ã□«ã²¼ã¿□
- Instant Drive 360 freewheel technology
- QRM Auto bearing preload technology

VERSIONS

- Disc standard : Center Lock® only
- Freewheel : Shimano/Sram

ホイールの重み

930