

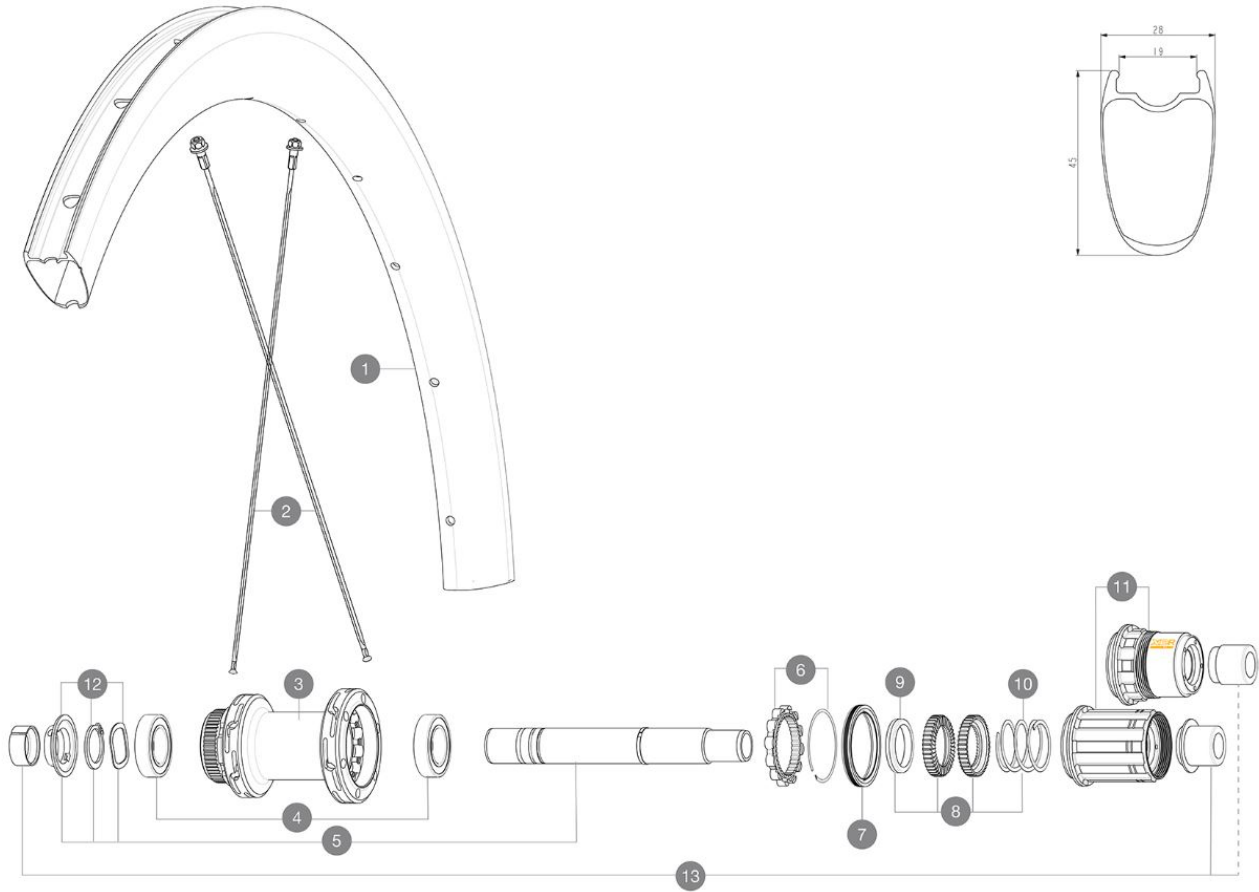
**MAVIC** **COSMIC SL 45 LTD****REFERENCES WHEELS**

ASTM CATEGORY 2 : road and offroad with jumps less than 15cm

For a longer longevity of the wheel, Mavic recommends that the total weight supported by the wheels doesn't exceed 120kg, bike included

Recommended tire sizes: 25 to 32 mm

Max. Pressure: see indication on wheel and tire. If they differ, use the lowest of the 2

**RIMS**

&NBSP;:

|          |           |  |
|----------|-----------|--|
| <b>1</b> | V00062931 | Kit Front/Rear rim Cosmic SL45 Ltd     |
|          | V3720101  | 25mm UST Tape for 19 to 22mm Road Rims |

**SPOKES**

|          |          |  |
|----------|----------|--|
| <b>2</b> | V4162901 | Kit 12 Front/Rear Cosmic SL 45 Disc butted stainless spoke 2 |
|----------|----------|--|

**HUB SHELLS**

|           |           |   |
|-----------|-----------|---|
| <b>3</b>  | N/A       | HUB BODY  |
| <b>4</b>  | M40076    | HUB BEARINGS 17x30x7 6903 x 2                         |
| <b>5</b>  | V2373401  | KIT ID360 135/142 DCL L1 AXLE WITH CLIP               |
| <b>6</b>  | V2252701  | KIT ID360 INSERT SHAPED EAR LOBE > 2017               |
| <b>7</b>  | V00063631 | Kit ID360 seal version 2 (larger)                     |
| <b>8</b>  | V2251701  | KIT ID360 2 RATCHETS + SPRING + GREASE                |
| <b>9</b>  | V2500501  | KIT ID360 3 PADS NOISE REDUCING                       |
| <b>10</b> | V2251801  | KIT 3 ID360 ROAD SPRINGS                              |
| <b>11</b> | V3430101  | HG11 Freewheel Body ID360                             |
| <b>11</b> | V2580101  | FREEHUB BODY XD Road ID360                            |
| <b>12</b> | V2373001  | KIT ADJUST. SYSTEM QRM AUTO ID360 for 17x30x7 bearing |

**ADAPTERS**

|           |          |                                |
|-----------|----------|--------------------------------|
| <b>13</b> | V2510701 | ID360V2RrAxleAdapt12x142/148   |
|           | V2510801 | ID360 V2 RrAxleAdapt9x135      |
|           | V2510901 | ID360 EVO RrAxleAdpt12x135/150 |

**DELIVERED WITH**

|   |  |
|---|--|
| Front QR adapters                                   |  |
| Rear QR adapters for Instant Drive 360 (B49 894 01) |  |
| UST valve and accessories (129 838 01)              |  |
| Pre-installed tubeless rim tape                     |  |
| User guide  |  |

**COMPATIBILITY**

|   |  |
|---|--|
| Freewheel: Shimano/Sram, convertible to Campagnolo ED11, N3W and XD-R with optional driver bodies                                 |  |
| Front axle: 12x100 thru axle, easily convertible to quick release with included adapters. Not compatible with 15mm through axles. |  |
| Rear axle: 12mm thru axle, convertible to Quick Release with included adapters  |  |

**Specifications**
**RIMS**

- **Material** : 100% carbon fiber
  - **Height** : 45 mm
  - **Drilling** : traditional
- Disc brake specific profile
- **Tire** : UST Tubeless and tubetype
  - **Internal width** : 19 mm
  - **ETRTO size** : 622x19TC
- UST tubeless technology

**SPOKES**

- **Material** : steel
- **Shape** : straight pull, flat, double butted
- **Nipples** : brass, ABS
- **Count** : 24 front and rear
- **Lacing** : front and rear crossed 2, contactless

**WHEEL HUB**

- Infinity hubs
- **Front and rear bodies** : aluminum
  - **Axle material** : aluminum
- Instant Drive 360 freewheel technology  
 QRM Auto bearing preload technology
- **Front** : Quick release and 12x100 through axle compatible
  - **Rear** : Quick Release, 12x142 and 12x135 compatible
- Hub available for Center Lock brake rotors only

**VERSIONS**

- **Disc standard** : Center Lock® only
- **Freewheel** : Shimano/Sram

**WHEEL WEIGHTS**

845